

THE
ARCHITAINMENT
SERIES

- **Fresnel**
- **Plano-Convex**
- **Profile**
- **Pinspot**

THE ARCHITAINMENT SERIES



From our decades of experience in professional lighting, a family of luminaires up to 100W LED available in a wide bunch of options is born:

The Architainment Series.

This series combines **very high technological standards** and **contemporary design** and it is suitable for the most diverse uses in **Architainment**.

4 primary colours LED Technology

The LED technology of Fresnel and Plano-Convex of the Architainment Series supports all the primary 4 colours: Red, Green, Blue and White.

Digital control and multimedia devices

The Architainment luminaires can be controlled by remote devices such as manual wall panels or memory panels of touch screens.

Connected to cabinets or dimmers, they are able to convert the control signal into power supply for any kind of lamps in use.

Optional custom configuration

In order to reduce the size of the luminaire in the exhibit area and/or for cost saving, the fixtures can be supplied with a remote power supply for one or more units.



Fresnel

Luminaires with Fresnel lens, adjustable yoke and adjustable optical zoom.

Recommended for soft and even lighting.



Plano-Convex

Fixtures with prism-convex lens, adjustable yoke and adjustable optical zoom.

Recommended for a more concentrated light spot and accent lighting.



Profile

Luminaires with adjustable shutters, adjustable yoke, adjustable optical zoom and focus.

Recommended for accent and precise lighting, as well as for images projection (gobos).



The **architectural luminaires**, just as in the entertainment market, can be controlled by remote devices such as manual wall panels or memory panels of touch screens.

Connected to cabinets or dimmers, they are able to convert the control signal into power supply for any kind of lamps in use.



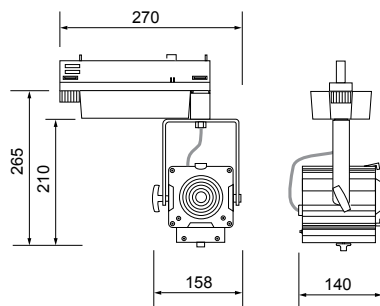
MAIN GENERAL FEATURES

Continuous light spectrum
90mm borosilicate lenses, both for Plano-Convex and Fresnel fixtures
Reversible graphic panel with selectable automatic switching off of the display
16 bit DMX control, extra soft dimming from the lowest levels, without changing colour temperature
Local control for additional adjustment of the intensity
Wide ventilation slots for better LED cooling with selectable fan speed in: "standard", "silent mode" and "auto"
2 selectable dimmer curves: linear and quadratic
Adjustable delay in turning on and off for tungsten emulation
Flicker-free mode with adjustable PWM LED frequency for best use with cameras
Automatic limit on the LED temperature with the control of the fan speed and with the adjustment of the LED current, to avoid any possible damage even in very critical conditions
Software update through XLR DMX connector
In and out connectors for mains XLR 5 pins for DM
Electronic autoranging power supply: 100-240V 50-60 Hz
IP 20
CE compliant
Factory LED calibration
No spill light towards audience
DMX512-A / RDM remote control

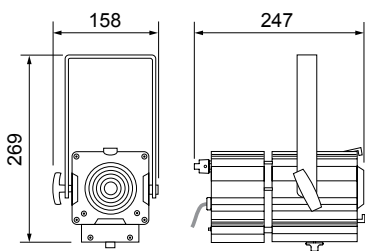


Optional custom configuration:

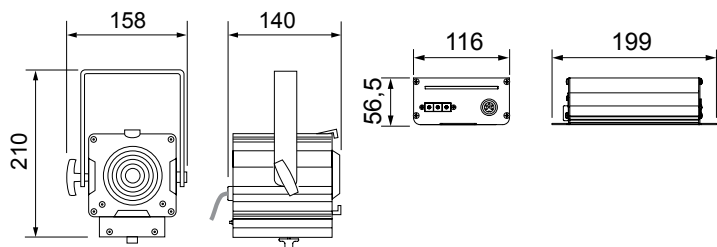
External power supply: in order to reduce the size of the luminaire in the exhibit area and/or for cost saving, the fixtures can be supplied with a remote power supply for one or more units



External power supply version with remote PSU



Built-in power supply version



External live-track power supply version

The iconic **LUT series** is **designed for accent and elegant lighting**, as versatile as a stage luminaire, as refined as a design lamp, it is suitable **to highlight artworks or objects but also to illuminate entire spaces in a sophisticated way.** Power, compactness, design and performance are the characterizing elements of this Pinspot series.



Pinspot

Micro LED fixture with variable power made of copper body with anodized aluminum base, rotation system and accessories. Internal wiring. High performing optics. Constant current power supply.



MINILUT LED

15W 48V
with integrated LED source
Dali/Casambi



MINILUT LED

30W 48V
with integrated LED source
Dali/Casambi



SUPERLUT LED

30W 230V
with integrated LED source
dimmable from Main



SUPERLUT

230V
for halo and LED lamps
(not included)



A COMPACT AND ELEGANT LIGHTING FIXTURE FOR EXCEPTIONAL PERFORMANCE

A high light efficiency LED combined with a transparent high efficiency lens allows remarkable performances, especially when compared to other fixtures of the same power and size. **It can light objects at great distances with a maximum consumption of only 15W or 30W per luminaire.**

AN INCREDIBLY VERSATILE LUMINAIRE

Thanks to the various optics and the flexibility of electrical and mechanical hanging solutions, **it can perform as a pin spot or fill a larger ambiance.**

The ease and speed of combinations allow the installer add-ons and modification to manage last-minute changes or priorities during setup.

LUT SERIES ACCENTS DETAILS IN A CHOIR OR AS A SOLO

LUT series is a product range born to thrill technicians, lighting and interior designers, decorators, engineers and architects thanks to its peculiar versatility to **give accent to small details as well as join into clusters or line-array for a larger team-work.**



SORAA brilliant™

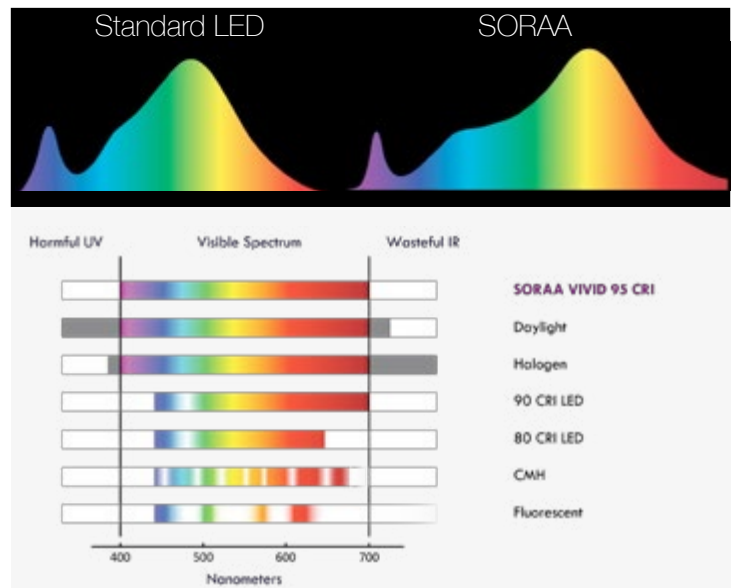
Brilliant series
Highest lumen output series

SORAA vivid™

Vivid series w/ Vivid Color™
Full-spectrum light with high color rendering

SORAA Brilliant™ and SORAA Vivid™ lamp for LUT

It is possible to integrate the **LUT** fixtures with the **SORAA Brilliant™** LED series, the **highest lumen output series**, or with **SORAA Vivid™** LED series, a powerful **full spectrum light series** capable of exceptionally enhancing the color rendering.



MAIN FEATURES OF SORAA™ LAMP FOR SUPERLUT

Wattage: 18,5W, 12V
85% more energy efficient than standard halogen lamps
Certification: FCC Title 47 Part 15B, RoHS, CE
Beam angles: 9°, 25°, 36°
Color temperature: 2700K, 3000K, 4000K
CRI: 85 (Brilliant Series), 95 (Vivid Series)



Headquarters and Showroom

Via Sardegna, 3 I-20098 San Giuliano Milanese MI
Phone: +39 02.988301 | Fax: +39 02.9883022

Registered Office

Via Martino Anzi, 8 I - 22100, Como (CO)
VAT 03859900130

www.spotlight.it | sales@spotlight.it