

Hyperion Series

700W Profile

(ver. 2022/07)



SOURCE

- 700W LED ARRAY
- Source life expectancy: > 50.000 h
- Note: for Luminous flux and Colour rendering refer to the table at the end of this document

SOFTWARE FUNCTIONS

- ESD: 8 or 16bit extra soft dimming
- 3 selectable dimmer curves
- Adjustable delay in turning on and off
- PWM LED 500Hz-20KHz
- Amber shift (8C)
- ± Green (8C)
- Color boost (8C)
- Calibration function (8C)
- Service channel
- Stand-alone
- Master Slave
- Hour-counter on single LED
- Storage and factory recovery
- Upgradable Firmware via DMX/USB tool
- Advanced remote settings for all parameters via DMX

CONTROL

- Protocols: DMX512, RDM, wireless-DMX ready
- Local potentiometer
- Reversible graphics display with standby-shutdown function
- Wireless ready

| | DMX Channels |
|-------|---------------------------------|
| WHITE | 1 / 3 / 6 ch |
| TW | 2 / 5 / 7 / 9 / 10 ch |
| 8C | 3 / 6 / 7 / 8 / 11 / 25 / 26 ch |

THERMAL MANAGEMENT

- Wide ventilation slots for better LED cooling with selectable fan speed in: "standard", "silent" and "auto" or DMX regulated
- High efficiency heat pipe cooling system
- No heat load from LED engine towards electronic and vice-versa avoiding the risk of failure due to overheating
- Ta max 40°C

OPTICS

- High-quality glass lens optics – AR coating
- Focus: manual (motorized-ready)
- Gobo size: B
- Note: for Beam angles refer to the table at the end of this document

PRESETS

- 45-GEL FILTER (8C)
- CCT 2700-20000K (8C)
- 10 CUSTOM PRESETS (8C)

HOUSING

- Highly resistant body in extruded aluminum and techno-polymer body
- Finishing: Black
- IP 20

ELECTRICAL

- Power supply: 100-240 V – 50/60 Hz
- Power consumption: 700 W
- PF>0.94/230VAC PF>0.98/115VAC at full load

CONNECTION

- Power connector: Chassis PowerCON TRUE1 In/Out
- Additional cable: 2m H05RN-F cable with powerCON TRUE1 female cable connector
- DMX: XLR 5-pole In/Out panel connectors

OPTIONS

- Pole Operated Yokes
- ARC Motorized Yokes DMX 512



COMPLIANCE

- CE
- EN 60598-1; EN 60598-2-17
- SSL Licensing Program
- Manufactured in Italy with Quality System ISO 9001:2015

DIMENSIONS

| | | |
|----|-------|-----------------|
| ZS | 31 Kg | 1270*470*400 mm |
| ZW | 28 Kg | 920*470*400 mm |

Hyperion Series

700W Profile

(ver. 2022/07)



DMX chart

| | WHITE | | |
|-------|--------|---------|-------------|
| | 1CH | 3CH | 6CH |
| | 8 BIT | 8 BIT | 16 BIT |
| 1 ch | DIMMER | DIMMER | DIMMER |
| 2 ch | | STROBO | DIMMER FINE |
| 3 ch | | SERVICE | DELAY |
| 4 ch | | | FAN |
| 5 ch | | | STROBE |
| 6 ch | | | SERVICE |
| 7 ch | | | |
| 8 ch | | | |
| 9 ch | | | |
| 10 ch | | | |

| | TUNABLE WHITE | | | | |
|--------|---------------|-------------|-------------|-------------|--------------|
| | EASY | SPLIT | SPLIT | STUDIO | THEATRE FULL |
| | 8 BIT | 8 BIT | 16 BIT | 16 BIT | 16 BIT |
| DIMMER | DIMMER | DIMMER | DIMMER | DIMMER | DIMMER |
| CCT | WW | DIMMER FINE | DIMMER FINE | DIMMER FINE | DIMMER FINE |
| | CW | WW | CCT | CCT | CCT |
| | STROBO | WW FINE | WW +/- | WW +/- | DELAY |
| | SERVICE | CW | CW +/- | CW +/- | FAN |
| | | CW FINE | DELAY | DELAY | STROBO |
| | | DELAY | FAN | FAN | SERVICE |
| | | FAN | STROBO | STROBO | |
| | | STROBO | SERVICE | SERVICE | |
| | | SERVICE | | | |

| | RGBACL+CW+WW | | | | | | |
|-------|---------------|---------|---------|------------|--------------|---------------|---------------|
| | EASY | CMY | RGB | HSI | RGBACL+CW+WW | THEATER | FULL |
| | 8 BIT | 8 BIT | 8 BIT | 8 BIT | 8 BIT | 16 BIT | 16 BIT |
| 1 ch | DIMMER | DIMMER | DIMMER | DIMMER | DIMMER | DIMMER | DIMMER |
| 2 ch | CCT | CYAN | RED | HUE | RED | DIMMER FINE | DIMMER FINE |
| 3 ch | COLOUR PRESET | MAGENTA | GREEN | HUE FINE | GREEN | RED | RED |
| 4 ch | | YELLOW | BLUE | SATURATION | BLUE | RED FINE | RED FINE |
| 5 ch | | STROBO | STROBO | CCT | AMBER | GREEN | GREEN |
| 6 ch | | SERVICE | SERVICE | STROBO | CYAN | GREEN FINE | GREEN FINE |
| 7 ch | | | | SERVICE | LIME | BLUE | BLUE |
| 8 ch | | | | | CW | BLUE FINE | BLUE FINE |
| 9 ch | | | | | WW | AMBER | AMBER |
| 10 ch | | | | | STROBO | AMBER FINE | AMBER FINE |
| 11 ch | | | | | SERVICE | CYAN | CYAN |
| 12 ch | | | | | | CYAN FINE | CYAN FINE |
| 13 ch | | | | | | LIME | LIME |
| 14 ch | | | | | | LIME FINE | LIME FINE |
| 15 ch | | | | | | CW | CW |
| 16 ch | | | | | | CW FINE | CW FINE |
| 17 ch | | | | | | WW | WW |
| 18 ch | | | | | | WW FINE | WW FINE |
| 19 ch | | | | | | COLOUR PRESET | COLOUR PRESET |
| 20 ch | | | | | | SATURATION | CCT |
| 21 ch | | | | | | CCT | +/- GREEN |
| 22 ch | | | | | | +/- GREEN | DELAY |
| 23 ch | | | | | | DELAY | FAN |
| 24 ch | | | | | | FAN | STROBO |
| 25 ch | | | | | | STROBO | SERVICE |
| 26 ch | | | | | | SERVICE | |

Hyperion Series

700W Profile

(ver. 2022/07)



LIGHT OUTPUT

| Model | Type | CT | (measure at) | CRI | TLCI | TM-30 | Beam | Lux | ∅ Beam | Lux | ∅ Beam | Lux | ∅ Beam | Lux | ∅ Beam | Lux | ∅ Beam | Peak CD |
|------------------|------|-------------|--------------|-----|------|-------|------|--------|--------|--------|--------|--------|--------|--------|--------|-------|--------|-----------|
| PR HY LED 700 ZS | WW | 3200K | 3200K | 95 | 92 | 93 | 8° | 65.339 | 0,6 | 29.039 | 0,8 | 16.335 | 1,1 | 10.454 | 1,4 | 7.260 | 1,7 | 1.045.417 |
| | | | | | | | 25° | 11.660 | 1,8 | 5.182 | 2,6 | 2.915 | 3,5 | 1.866 | 4,4 | 1.296 | 5,3 | 186.567 |
| | CW | 5600K | 5600K | 95 | 92 | 93 | 8° | 73.125 | 0,6 | 32.500 | 0,8 | 18.281 | 1,1 | 11.700 | 1,4 | 8.125 | 1,7 | 1.170.000 |
| | | | | | | | 25° | 13.050 | 1,8 | 5.800 | 2,6 | 3.263 | 3,5 | 2.088 | 4,4 | 1.450 | 5,3 | 208.800 |
| | TW | 2700-6500K | 5600K | 95 | 92 | 93 | 8° | 66.016 | 0,6 | 29.340 | 0,8 | 16.504 | 1,1 | 10.563 | 1,4 | 7.335 | 1,7 | 1.056.250 |
| | | | | | | | 25° | 14.455 | 1,8 | 6.425 | 2,6 | 3.614 | 3,5 | 2.313 | 4,4 | 1.606 | 5,3 | 231.286 |
| | 8C | 1500-20000K | Full Ch | 97 | 92 | 94 | 8° | 61.107 | 0,6 | 27.159 | 0,8 | 15.277 | 1,1 | 9.777 | 1,4 | 6.790 | 1,7 | 977.708 |
| | | | | | | | 25° | 10.905 | 1,8 | 4.847 | 2,6 | 2.726 | 3,5 | 1.745 | 4,4 | 1.212 | 5,3 | 174.483 |
| | | | | | | | | | 4 m | | 6 m | | 8 m | | 10 m | | 12 m | |

| Model | Type | CT | (measure at) | CRI | TLCI | TM-30 | Beam | Lux | ∅ Beam | Lux | ∅ Beam | Lux | ∅ Beam | Lux | ∅ Beam | Lux | ∅ Beam | Peak CD |
|------------------|------|-------------|--------------|-----|------|-------|------|--------|--------|-------|--------|-------|--------|-------|--------|-------|--------|---------|
| PR HY LED 700 ZW | WW | 3200K | 3200K | 95 | 92 | 93 | 20° | 16.124 | 1,4 | 7.166 | 2,1 | 4.031 | 2,8 | 2.580 | 3,5 | 1.792 | 4,2 | 257.977 |
| | | | | | | | 40° | 4.322 | 2,9 | 1.921 | 4,3 | 1.081 | 5,8 | 692 | 7,2 | 480 | 8,7 | 69.158 |
| | CW | 5600K | 5600K | 95 | 92 | 93 | 20° | 18.045 | 1,4 | 8.020 | 2,1 | 4.511 | 2,8 | 2.887 | 3,5 | 2.005 | 4,2 | 288.720 |
| | | | | | | | 40° | 4.838 | 2,9 | 2.150 | 4,3 | 1.209 | 5,8 | 774 | 7,2 | 538 | 8,7 | 77.400 |
| | TW | 2700-6500K | 5600K | 95 | 92 | 93 | 20° | 16.291 | 1,4 | 7.240 | 2,1 | 4.073 | 2,8 | 2.607 | 3,5 | 1.810 | 4,2 | 260.650 |
| | | | | | | | 40° | 5.358 | 2,9 | 2.382 | 4,3 | 1.340 | 5,8 | 857 | 7,2 | 595 | 8,7 | 85.735 |
| | 8C | 1500-20000K | Full Ch | 97 | 92 | 94 | 20° | 15.079 | 1,4 | 6.702 | 2,1 | 3.770 | 2,8 | 2.413 | 3,5 | 1.675 | 4,2 | 241.268 |
| | | | | | | | 40° | 4.042 | 2,9 | 1.797 | 4,3 | 1.011 | 5,8 | 647 | 7,2 | 449 | 8,7 | 64.679 |
| | | | | | | | | | 4 m | | 6 m | | 8 m | | 10 m | | 12 m | |

NOISE LEVEL DATA (silent mode)

Test conditions during measurements:

Temperature: 22°C
 Relative humidity: 79%
 Radius of spherical measuring surface: 2m



Test in hemi-anechoic room

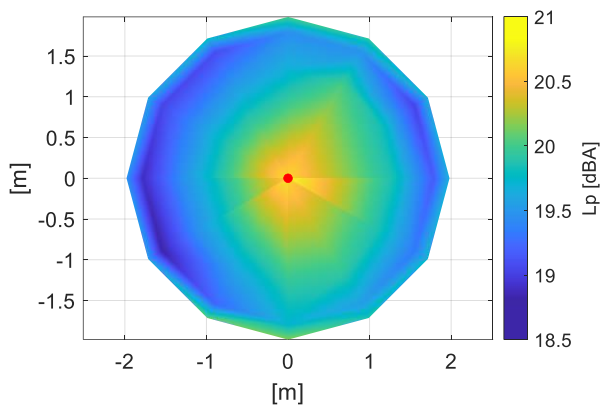
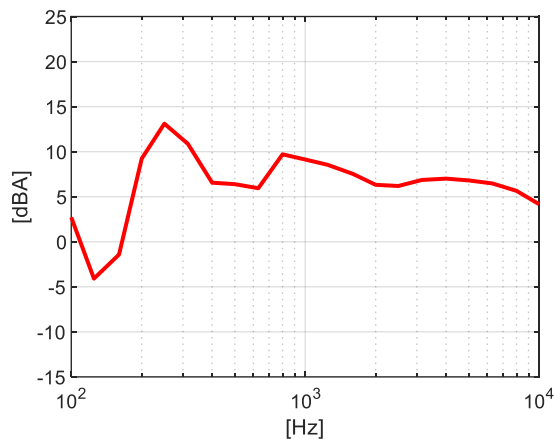
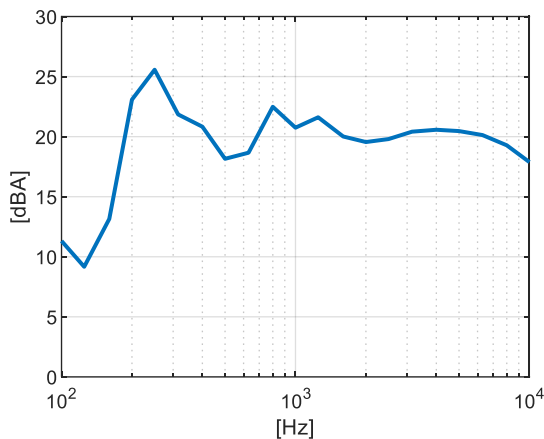


Diagram of Sound Pressure level L_p [dBA], the red point identifies the direction of maximum noise emission ¹



Sound pressure level spectrum [dBA] measured at maximum noise emission point



Sound power level spectrum L_{WA} [dBA]

Total sound pressure level L_p (0.1 – 10 kHz, ref. 2×10^{-5} Pa) at different distances²:

| Distance | 1 m | 2 m | 4 m | 6 m |
|----------------------------|----------|----------|----------|----------|
| Sound pressure level L_p | 26.8 dBA | 20.8 dBA | 14.8 dBA | 11.3 dBA |

The total sound power level L_{WA} is equal to 33.7 dBA (0.1 – 10 kHz, ref. 1×10^{-12} W).

¹The positive direction of X axis corresponds to the spotlight central axis and points in the direction of light emission

²Estimated Sound Pressure levels starting from the one measured at the point of maximum noise emissions at 2 m.