

Datasheet

50W



85W



100W



200W



300W



700W



CYC LED 300 RGBW

Asymmetrical cyclorama

(ver. 2023/05)



SOURCE

- **300W LED ARRAY (18x16W)**
- For **LUMINOUS FLUX** and **COLOR RENDERING INDEX (CRI)** refer to the related table

RGBW	Luminous flux	Colour rendering		
		CRI	TLCI	TM-30
	4'504 lm	>85	90	90

HOUSING

- Highly resistant body in **extruded aluminum**
- **IP 20**
- Finishing: **black (other RAL color on request)**

ELECTRICAL

- Power consumption: 300 W
- Power supply: 100-240 V – 50/60 Hz
- PF>0.94/230VAC PF>0.98/115VAC at full load

THERMAL MANAGEMENT

- Wide ventilation slots for better LED cooling with 3 selectable FAN MODE
- High efficiency heat pipe cooling system
- Ta max 40°C

CONNECTION

- Power connector: chassis PowerCON TRUE1 In/Out
- Additional cable: 2m H05RN-F cable with powerCON TRUE1 female cable connector
- DMX: XLR 5-pole In/Out panel connectors

OPTICS

- **High-quality glass and PMMA lens / AR coating**

OPTIONS

- Pole Operated yokes
 - ARC Motorized yokes
- more info [here](#)

PRESETS

- RGBW:
- Manual/DMX control:
 - o standard (45) + CCT (2700-8000K) + custom (10)

COMPLIANCE

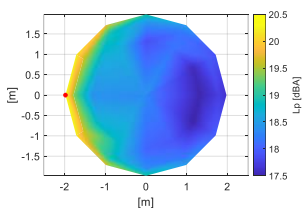
- CE
- EN 60598-1; EN 60598-2-17
- SSL Licensing Program
- Manufactured in Italy with Quality System ISO 9001:2015

NOISE LEVEL DATA (silent mode)

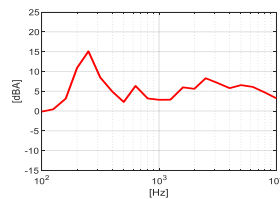
Conditions during measurements:

- Test in hemi-anechoic room
- Temperature: 22°C
- Relative humidity: 79%
- Radius of spherical measuring surface: 2m

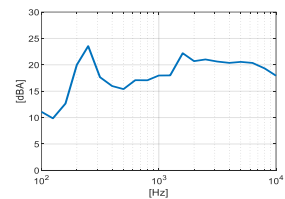
Diagram of Sound Pressure level L_p [dBA], the red point identifies the direction of maximum noise emission ¹



Sound pressure level spectrum [dBA] measured at maximum noise emission point



Sound power level spectrum L_{WA} [dBA]



Total sound pressure level L_p (0.1 – 10 kHz, ref. 2×10^{-5} Pa) at different distances²:

Distance	1 m	2 m	4 m	6 m
Sound pressure level L_p	26.3 dBA	20.3 dBA	14.3 dBA	10.8 dBA

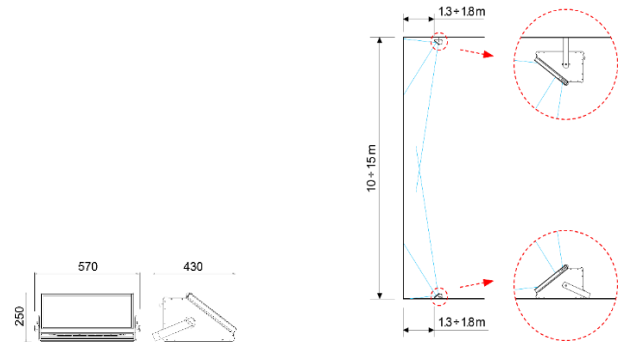
The total sound power level L_{WA} is equal to **32.4 dBA** (0.1 – 10 kHz, ref. 1×10^{-12} W).

SOFTWARE FUNCTIONS

- **ESD**: 8bit or 16bit
- Up to 3 **DIMMING CURVE**
- **LED DELAY**: from 0 to 2000ms
- PWM LED 500Hz-20KHz
- **OUTPUT FREQUENCY** in order to remove flickering
- **LED BOOST** in order to increase +20% the light output of a fixture when for a tint or CCT when not all LED channels are at full (only for Tunable White, RGBW, 6C versions)
- 3 selectable **FAN MODE**
- **LED CALIBRATION** in order to adjust the tints of a group of fixtures when/if they aren't aligned, despite being set with the same DMX values (only for RGBW, 6C versions)
- **SERVICE CHANNEL** in order to control all the settings that are normally set from the fixture by using a console
- **STAND-ALONE** and **MASTER AND SLAVE** in order to control one or more fixtures without using a console, creating one or multi scenes
- **DISPLAY ROTATION** and **DISPLAY ON/OFF**
- Hour-counter on single LED
- Storage and factory recovery
- Upgradable firmware via DMX/USB tool
- Advanced remote settings (**RDM**) for all parameters via DMX

DIMENSIONS

Cyclorama	15.0 Kg	250x570x430 mm
-----------	---------	----------------



¹The positive direction of X axis corresponds to the spotlight central axis and points in the direction of light emission.

²Estimated Sound Pressure levels starting from the one measured at the point of maximum noise emissions at 2 m.

DMX PERSONALITIES

RGBW					
	EASY 8 BIT	HSI 8 BIT	CMY 8 BIT	RGBW 8 BIT	FULL 16 BIT
1 ch	DIMMER	DIMMER	DIMMER	DIMMER	DIMMER
2 ch	CCT PRESET	HUE	CYAN	RED	DIMMER FINE
3 ch	COLOUR PRESET	HUE FINE	MAGENTA	GREEN	RED
4 ch		SATURATION	YELLOW	BLUE	RED FINE
5 ch		STROBO+STORE	STROBO+STORE	WHITE	GREEN
6 ch		SERVICE	SERVICE	CCT PRESET	GREEN FINE
7 ch				COLOUR PRESET	BLUE
8 ch				STROBO+STORE	BLUE FINE
9 ch				SERVICE	WHITE
10 ch					WHITE FINE
11 ch					CCT PRESET
12 ch					COLOUR PRESET
13 ch					DELAY
14 ch					FAN
15 ch					STROBO+STORE
16 ch					SERVICE