

| Serie Lucciola  | Serie Architectural         | Serie Halled     | Serie Hyperion               |                              |                              |                    |                              | Serie Cyclorama    |                   |
|-----------------|-----------------------------|------------------|------------------------------|------------------------------|------------------------------|--------------------|------------------------------|--------------------|-------------------|
| 30W<br>Pinpoint | 50W<br>Fresnel, PC, Profile | 85W<br>Downlight | 100W<br>Fresnel, PC, Profile | 200W<br>Fresnel, PC, Profile | 300W<br>Fresnel, PC, Profile | 300W<br>Followspot | 700W<br>Fresnel, PC, Profile | 700W<br>Followspot | 300W<br>Cyclorama |

#### SOURCE

- **300W LED ARRAY**
- For **LUMINOUS FLUX** and **COLOR RENDERING INDEX (CRI)** refer to the related table

#### HOUSING

- Highly resistant body in **extruded aluminum** and **techno-polymer** body
- **IP 20**
- Finishing: **black (other RAL color on request)**

#### ELECTRICAL

- Power consumption: 300W
- Power supply: 100-240 V – 50/60 Hz
- PF>0.94/230VAC PF>0.98/115VAC at full load

#### THERMAL MANAGEMENT

- Wide ventilation slots for better LED cooling with 3 selectable FAN MODE
- High efficiency heat pipe cooling system
- Ta max 40°C

#### CONNECTION

- Power connector: chassis PowerCON TRUE1 In/Out
- Additional cable: 2m H05RN-F cable with powerCON TRUE1 female cable connector
- DMX: XLR 5-pole In/Out panel connectors

#### OPTICS

- **150mm high-quality glass lens / AR coating**
- Focus: manual
- Gobo size: B
- For beam angles refer to the related table

#### OPTIONS

- Not applicable

#### COMPLIANCE

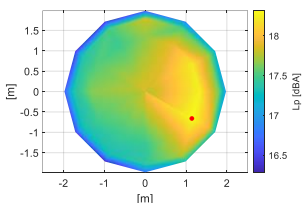
- CE
- EN 60598-1; EN 60598-2-17
- SSL Licensing Program
- Manufactured in Italy with Quality System ISO 9001:2015

#### NOISE LEVEL DATA (silent mode)

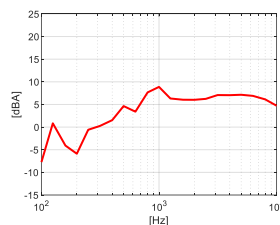
Conditions during measurements:

- Test in hemi-anechoic room
- Temperature: 22°C
- Relative humidity: 79%
- Radius of spherical measuring surface: 2m

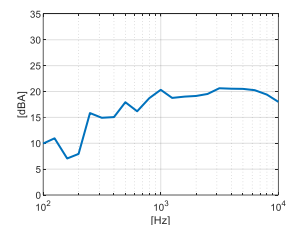
Diagram of Sound Pressure level  $L_p$  [dBA], the red point identifies the direction of maximum noise emission <sup>1</sup>



Sound pressure level spectrum [dBA] measured at maximum noise emission point



Sound power level spectrum  $L_{WA}$  [dBA]



Total sound pressure level  $L_p$  (0.1 – 10 kHz, ref.  $2 \times 10^{-5}$  Pa) at different distances<sup>2</sup>:

| Distance                | 1 m      | 2 m      | 4 m      | 6 m      |
|-------------------------|----------|----------|----------|----------|
| Sound pressure level LP | 29.5 dBA | 23.5 dBA | 17.5 dBA | 14.0 dBA |

The total sound power level  $L_{WA}$  is equal to **31.3 dBA** (0.1 – 10 kHz, ref.  $1 \times 10^{-12}$  W).

#### SOFTWARE FUNCTIONS

- **ESD**: 8bit or 16bit
- Up to 6 **DIMMING CURVE Mark-II**
- **LED DELAY**: from 0 to 2000ms
- PWM LED 500Hz-20KHz
- **OUTPUT FREQUENCY** in order to remove flickering
- 3 selectable **FAN MODE**
- **SERVICE CHANNEL** in order to control all the settings that are normally set from the fixture by using a console
- **DISPLAY ROTATION** and **DISPLAY ON/OFF**
- **BOARD TEMPERATURE** and **CHIP TEMPERATURE** in order to monitor how the fixture works **Mark-II**
- **WIRELESS DMX** ready **Mark-II**
- Hour-counter on single LED
- Storage and factory recovery
- Upgradable firmware via DMX/USB tool
- Advanced remote settings (**RDM**) for all parameters via DMX
- **ERROR LIST** in order to display errors that can occur

#### COLOR and CCT PRESETS

- 6way built-in manual colour changer

#### DIMENSIONS

|            |       |                |
|------------|-------|----------------|
| Followspot | 19 Kg | 840*280*250 mm |
|------------|-------|----------------|

<sup>1</sup>The positive direction of X axis corresponds to the spotlight central axis and points in the direction of light emission.

<sup>2</sup>Estimated Sound Pressure levels starting from the one measured at the point of maximum noise emissions at 2 m.

| Serie Lucciola | Serie Architectural         | Serie Halled     | Serie Hyperion               |                              |                              |                    |                              |                    | Serie Cyclorama   |
|----------------|-----------------------------|------------------|------------------------------|------------------------------|------------------------------|--------------------|------------------------------|--------------------|-------------------|
| 30W<br>Pinspot | 50W<br>Fresnel, PC, Profile | 85W<br>Downlight | 100W<br>Fresnel, PC, Profile | 200W<br>Fresnel, PC, Profile | 300W<br>Fresnel, PC, Profile | 300W<br>Followspot | 700W<br>Fresnel, PC, Profile | 700W<br>Followspot | 300W<br>Cyclorama |

## DMX PERSONALITIES

| White |        |              |              |
|-------|--------|--------------|--------------|
|       | 1CH    | 3CH          | 6CH          |
|       | 8 BIT  | 8 BIT        | 16 BIT       |
| 1 ch  | DIMMER | DIMMER       | DIMMER       |
| 2 ch  |        | STROBO+STORE | DIMMER FINE  |
| 3 ch  |        | SERVICE      | DELAY        |
| 4 ch  |        |              | FAN          |
| 5 ch  |        |              | STROBO+STORE |
| 6 ch  |        |              | SERVICE      |

## LIGHT OUTPUT

| Model         | Type | CT    | (measure at) | CRI | TLCI | TM-30 | Lumen | Beam | Lux    | Ø Beam | Lux   | Ø Beam | Lux   | Ø Beam | Lux   | Ø Beam | Lux  | Ø Beam | Peak CD |
|---------------|------|-------|--------------|-----|------|-------|-------|------|--------|--------|-------|--------|-------|--------|-------|--------|------|--------|---------|
| FS HY LED 300 | CW   | 5600K | 5600K        | 97  | 97   | 94    |       | 7°   | 16.893 | 0,6    | 4.223 | 1,2    | 1.877 | 1,8    | 1.056 | 2,4    | 676  | 3,0    | 422.325 |
|               |      |       |              |     |      |       |       | 14°  | 6.480  | 1,2    | 1.620 | 2,4    | 720   | 3,7    | 405   | 4,9    | 259  | 6,1    | 162.000 |
|               |      |       |              |     |      |       |       |      | 5 m    |        | 10 m  |        | 15 m  |        | 20 m  |        | 25 m |        |         |

## What is in the box

- Fixture
- 2m H05RN-F cable with powerCON TRUE1 female cable connector
- Safety instructions

## Accessories

### FIXTURE

- Rotatable gobo-holder type B **PGB HY**
- Tripod stand (low), 28mm DIN receiver, adjustable with lazy leg **BS**
- Attachment DIN spigot to 10 MA with plate (for BS and AS stand) **DIN P 10**
- Set of 3 wheels with brake **RF**

### MOVEMENT SYSTEM

- Not applicable