

Serie Lucciola	Serie Architectural	Serie Halled	Serie Hyperion						Serie Cyclorama
30W Pinspot	50W Fresnel, PC, Profile	85W Downlight	100W Fresnel, PC, Profile	200W Fresnel, PC, Profile	300W Fresnel, PC, Profile	300W Followspot	700W Fresnel, PC, Profile	700W Followspot	300W Cyclorama

SOURCE

- **200W LED**
- For **LUMINOUS FLUX** and **COLOR RENDERING INDEX (CRI)** refer to the related table

HOUSING

- Highly resistant body in **extruded aluminum** and **techno-polymer** body
- **IP 20**
- Finishing: **black (other RAL color on request)**

ELECTRICAL

- Power consumption: 200 W
- Power supply: 100-240 V – 50/60 Hz
- PF>0.94/230VAC PF>0.98/115VAC at full load

THERMAL MANAGEMENT

- Wide ventilation slots for better LED cooling with 3 selectable FAN MODE
- High efficiency heat pipe cooling system
- Ta max 40°C

CONNECTION

- Power connector: chassis PowerCON TRUE1 In/Out
- Additional cable: 2m H05RN-F cable with powerCON TRUE1 female cable connector
- DMX: XLR 5-pole In/Out panel connectors

OPTICS

- **150mm high-quality glass lens / AR coating**
- Focus: manual
- Gobo size: B (only for Profile)
- For beam angles refer to the related table

OPTIONS

- Pole Operated yokes
 - ARC Motorized yokes
- more info [here](#)

COMPLIANCE

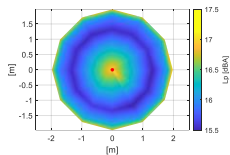
- CE
- EN 60598-1; EN 60598-2-17
- SSL Licensing Program
- Manufactured in Italy with Quality System ISO 9001:2015

NOISE LEVEL DATA (silent mode)

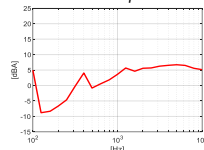
Conditions during measurements:

- Test in hemi-anechoic room
- Temperature: 22°C
- Relative humidity: 79%
- Radius of spherical measuring surface: 2m

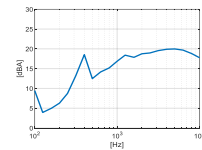
Diagram of Sound Pressure level L_p [dBA], the red point identifies the direction of maximum noise emission ¹



Sound pressure level spectrum [dBA] measured at maximum noise emission point



Sound power level spectrum L_{WA} [dBA]



Total sound pressure level L_p (0.1 – 10 kHz, ref. 2×10^{-5} Pa) at different distances²:

Distance	1 m	2 m	4 m	6 m
Sound pressure level L_p	23.1 dBA	17.1 dBA	11.1 dBA	7.6 dBA

The total sound power level L_{WA} is equal to **30.2 dBA** (0.1 – 10 kHz, ref. 1×10^{-12} W).

SOFTWARE FUNCTIONS

- **ESD**: 8bit or 16bit
- Up to 6 **DIMMING CURVE Mark-II**
- **LED DELAY**: from 0 to 2000ms
- **AMBER SHIFT**, in combination whit HALO dimming curve and LED delay, in order to emulate the performances of a halogen lamp (only for 6C version)
- PWM LED 500Hz-20KHz
- **± GREEN** in order to guarantee a fine adjustment of green component of CCT (only for 6C version)
- **OUTPUT FREQUENCY** in order to remove flickering
- **LED BOOST** in order to increase +20% the light output of a fixture when for a tint or CCT when not all LED channels are at full
- 3 selectable **FAN MODE**
- **LED CALIBRATION** in order to adjust the tints of a group of fixtures when/if they aren't aligned, despite being set with the same DMX values (only for RGBW, 6C versions)
- **SERVICE CHANNEL** in order to control all the settings that are normally set from the fixture by using a console
- **STAND-ALONE** and **MASTER AND SLAVE** in order to control one or more fixtures without using a console, creating one or multi scenes
- **DISPLAY ROTATION** and **DISPLAY ON/OFF**
- **BOARD TEMPERATURE** and **CHIP TEMPERATURE** in order to monitor how the fixture works **Mark-II**
- **WIRELESS DMX** ready **Mark-II**
- Hour-counter on single LED
- Storage and factory recovery
- Upgradable firmware via DMX/USB tool
- Advanced remote settings (**RDM**) for all parameters via DMX
- **ERROR LIST** in order to display errors that can occur

COLOR and CCT PRESETS

RGBW:

- Manual/DMX control:
 - o standard (45) + CCT (2700-8000K) + custom (10)

6C:

- Manual control **Mark-II**
 - o MANUAL PRESET: CCT (9) + LEE FILTERS (66) + custom (10)
 - o MANUAL COLOUR: LEE filters (66) + custom (19)
 - o MANUAL CCT: CCT (36)
- DMX control:
 - o LEE FILTERS channel: standard (241) + custom (14) **Mark-II**
 - o ROSCO FILTERS channel: standard (236) + custom (19) **Mark-II**
 - o CCT channel: TW (2700-6500K) / 6C/8C (1500-20000K) **Mark-II**

DIMENSIONS

FN	6.0 / 7,5 kg	350*300*360 / 390*300*450 mm
PC	6.0 / 7,5 kg	350*300*360 / 390*300*450 mm
PR (ZS)	11.5 Kg	470*340*760 mm
PR (ZW)	10.0 Kg	470*340*640 mm

¹The positive direction of X axis corresponds to the spotlight central axis and points in the direction of light emission.

²Estimated Sound Pressure levels starting from the one measured at the point of maximum noise emissions at 2 m.

Serie Lucciola	Serie Architectural	Serie Halled	Serie Hyperion					Serie Cyclorama	
30W Pinspot	50W Fresnel, PC, Profile	85W Downlight	100W Fresnel, PC, Profile	200W Fresnel, PC, Profile	300W Fresnel, PC, Profile	300W Followspot	700W Fresnel, PC, Profile	700W Followspot	300W Cyclorama

DMX PERSONALITIES

	White		
	1CH	2CH	3CH
	8 BIT	8 BIT	16 BIT
1 ch	DIMMER	DIMMER	DIMMER
2 ch		STROBO	DIMMER FINE
3 ch			STROBO
4 ch			
5 ch			
6 ch			
7 ch			
8 ch			
9 ch			
10 ch			

	Tunable White				
	EASY	SPLIT	SPLIT	STUDIO	THEATRE FULL
	8 BIT	8 BIT	16 BIT	16 BIT	16 BIT
DIMMER	DIMMER	DIMMER	DIMMER	DIMMER	DIMMER
CCT LINEAR	WW	DIMMER FINE	DIMMER FINE	DIMMER FINE	DIMMER FINE
	CW	WW	CCT PRESET	CCT LINEAR	
	STROBO+STORE	WW FINE	WW +/-	DELAY	
	SERVICE	CW	CW +/-	FAN	
		CW FINE	DELAY	STROBO+STORE	
		DELAY	FAN	SERVICE	
		FAN	STROBO+STORE		
		STROBO+STORE	SERVICE		
		SERVICE			

	RGBW				
	EASY	HSI	CMY	RGBW	FULL
	8 BIT	8 BIT	8 BIT	8 BIT	16 BIT
1 ch	DIMMER	DIMMER	DIMMER	DIMMER	DIMMER
2 ch	CCT PRESET	HUE	CYAN	RED	DIMMER FINE
3 ch	COLOUR PRESET	HUE FINE	MAGENTA	GREEN	RED
4 ch		SATURATION	YELLOW	BLUE	RED FINE
5 ch		STROBO+STORE	STROBO+STORE	WHITE	GREEN
6 ch		SERVICE	SERVICE	CCT PRESET	GREEN FINE
7 ch				COLOUR PRESET	BLUE
8 ch				STROBO+STORE	BLUE FINE
9 ch				SERVICE	WHITE
10 ch					WHITE FINE
11 ch					CCT PRESET
12 ch					COLOUR PRESET
13 ch					DELAY
14 ch					FAN
15 ch					STROBO+STORE
16 ch					SERVICE

	6C					
	EASY	HSIC	RGBACL	RGBACL	THEATER	STUDIO
	8 BIT	8 BIT	8 BIT	16 BIT	16 BIT	16 BIT
1 ch	DIMMER	DIMMER	DIMMER	DIMMER	DIMMER	DIMMER
2 ch	ROSCO FILTERS	HUE	RED	DIMMER FINE	DIMMER FINE	DIMMER FINE
3 ch	LEE FILTERS	HUE FINE	GREEN	RED	RED	RED
4 ch	CCT PRESET	SATURATION	BLUE	RED FINE	RED FINE	RED FINE
5 ch		CCT LINEAR	AMBER	GREEN	GREEN	GREEN
6 ch		STROBO+STORE	CYAN	GREEN FINE	GREEN FINE	GREEN FINE
7 ch		SERVICE	LIME	BLUE	BLUE	BLUE
8 ch			STROBO+STORE	BLUE FINE	BLUE FINE	BLUE FINE
9 ch			SERVICE	AMBER	AMBER	AMBER
10 ch				AMBER FINE	AMBER FINE	AMBER FINE
11 ch				CYAN	CYAN	CYAN
12 ch				CYAN FINE	CYAN FINE	CYAN FINE
13 ch				LIME	LIME	LIME
14 ch				LIME FINE	LIME FINE	LIME FINE
15 ch					ROSCO FILTERS	ROSCO FILTERS
16 ch					LEE FILTERS	LEE FILTERS
17 ch					SATURATION	CCT STEPS
18 ch					CCT LINEAR	GREEN +/-
19 ch					GREEN +/-	DELAY
20 ch					DELAY	FAN
21 ch					FAN	STROBO+STORE
22 ch					STROBO+STORE	SERVICE
23 ch					SERVICE	FREE 1
24 ch					FREE 1	FREE 2
25 ch					FREE 2	

LIGHT OUTPUT



How to... (video tutorial)

[...set DMX personality and DMX address](#)

[...emulate a halogen lamp](#)

[...avoid acoustic and visual disturbances](#)

[...set stand alone and master-slave](#)

[...increase light output +20%](#)

[...set the LED calibration](#)

[...set the colour custom presets](#)

[User manual](#)

[Contact Sales Office](#)

Serie Lucciola	Serie Architectural	Serie Halled	Serie Hyperion													Serie Cyclorama
30W Pinspot	50W Fresnel, PC, Profile	85W Downlight	100W Fresnel, PC, Profile	200W Fresnel, PC, Profile		300W Fresnel, PC, Profile		300W Followspot		700W Fresnel, PC, Profile		700W Followspot		300W Cyclorama		

Model	Type	CT	(measure at)	CRI	TLCI	TM-30	Lumen	Beam	Lux	Ø Beam	Lux	Ø Beam	Lux	Ø Beam	Lux	Ø Beam	Lux	Ø Beam	Peak CD
FN HY LED 200	WW	3000K	3000K	97	97	94	10.877	14°	3.975	1,0	1.767	1,5	994	2,0	636	2,4	442	2,9	63.600
								81°	388	6,8	172	10,1	97	13,5	62	16,9	43	20,3	6.200
	NW	4000K	4000K	97	97	94	11.486	14°	4.198	1,0	1.866	1,5	1.049	2,0	672	2,4	466	2,9	67.163
								81°	409	6,8	182	10,1	102	13,5	65	16,9	45	20,3	6.547
	CW	5600K	5600K	97	97	94	13.401	14°	4.897	1,0	2.177	1,5	1.224	2,0	784	2,4	544	2,9	78.356
								81°	477	6,8	212	10,1	119	13,5	76	16,9	53	20,3	7.639
	TW	2700-6500K	4000K	95	92	93	6.530	13°	5.594	0,9	2.486	1,4	1.398	1,8	895	2,3	622	2,7	89.500
								50°	1.150	3,7	511	5,6	288	7,4	184	9,3	128	11,1	18.400
	RGBW	2700-8000K	Full Ch	85	90	90	4.506	13°	3.775	0,9	1.678	1,4	944	1,8	604	2,3	419	2,7	60.400
								50°	850	3,7	378	5,6	213	7,4	136	9,3	94	11,1	13.600
	6C	1500-20000K	Full Ch	97	92	94	5.224	13°	4.475	0,9	1.989	1,4	1.119	1,8	716	2,3	497	2,7	71.600
								50°	920	3,7	409	5,6	230	7,4	147	9,3	102	11,1	14.720
									4 m		6 m		8 m		10 m		12 m		

Model	Type	CT	(measure at)	CRI	TLCI	TM-30	Lumen	Beam	Lux	Ø Beam	Lux	Ø Beam	Lux	Ø Beam	Lux	Ø Beam	Lux	Ø Beam	Peak CD
PC HY LED 200	WW	3000K	3000K	97	97	94	10.555	16°	2.170	1,1	964	1,7	543	2,2	347	2,8	241	3,3	34.720
								87°	378	7,5	168	11,3	94	15,0	60	18,8	42	22,5	6.040
	NW	4000K	4000K	97	97	94	11.146	16°	2.292	1,1	1.018	1,7	573	2,2	367	2,8	255	3,3	36.665
								87°	399	7,5	177	11,3	100	15,0	64	18,8	44	22,5	6.378
	CW	5600K	5600K	97	97	94	13.004	16°	2.673	1,1	1.188	1,7	668	2,2	428	2,8	297	3,3	42.776
								87°	465	7,5	207	11,3	116	15,0	74	18,8	52	22,5	7.441
	TW	2700-6500K	4000K	95	92	93	5.991	15°	3.844	1,0	1.708	1,6	961	2,1	615	2,6	427	3,1	61.500
								50°	847	3,7	376	5,6	212	7,4	136	9,3	94	11,1	13.550
	RGBW	2700-8000K	Full Ch	85	90	90	4.425	15°	2.750	1,0	1.222	1,6	688	2,1	440	2,6	306	3,1	44.000
								50°	653	3,7	290	5,6	163	7,4	104	9,3	73	11,1	10.440
	6C	1500-20000K	Full Ch	97	92	94	4.793	15°	3.075	1,0	1.367	1,6	769	2,1	492	2,6	342	3,1	49.200
								50°	678	3,7	301	5,6	169	7,4	108	9,3	75	11,1	10.840
									4 m		6 m		8 m		10 m		12 m		

Model	Type	CT	(measure at)	CRI	TLCI	TM-30	Lumen	Beam	Lux	Ø Beam	Lux	Ø Beam	Lux	Ø Beam	Lux	Ø Beam	Lux	Ø Beam	Peak CD
PR HY LED 200 ZS	WW	3000K	3000K	97	97	94	3.471	15°	6.550	1,0	2.911	1,6	1.638	2,1	1.048	2,6	728	3,1	104.800
								30°	2.295	2,1	1.020	3,2	574	4,3	367	5,3	255	6,4	36.720
	NW	4000K	4000K	97	97	94	3.665	15°	6.917	1,0	3.074	1,6	1.729	2,1	1.107	2,6	769	3,1	110.672
								30°	2.424	2,1	1.077	3,2	606	4,3	388	5,3	269	6,4	38.777
	CW	5600K	5600K	97	97	94	4.276	15°	8.070	1,0	3.587	1,6	2.017	2,1	1.291	2,6	897	3,1	129.115
								30°	2.827	2,1	1.257	3,2	707	4,3	452	5,3	314	6,4	45.240
	TW	2700-6500K	4000K	95	92	93	3.874	15°	6.997	1,0	3.110	1,6	1.749	2,1	1.120	2,6	777	3,1	111.950
								30°	2.072	2,1	921	3,2	518	4,3	332	5,3	230	6,4	33.150
	RGBW	2700-8000K	Full Ch	85	90	90	2.944	15°	5.318	1,0	2.363	1,6	1.329	2,1	851	2,6	591	3,1	85.082
								30°	1.575	2,1	700	3,2	394	4,3	252	5,3	175	6,4	25.194
	6C	1500-20000K	Full Ch	97	92	94	3.099	15°	5.598	1,0	2.488	1,6	1.399	2,1	896	2,6	622	3,1	89.560
								30°	1.658	2,1	737	3,2	414	4,3	265	5,3	184	6,4	26.520
PR HY LED 200 ZW	WW	3000K	3000K	97	97	94	3.647	25°	3.900	1,8	1.733	2,6	975	3,5	624	4,4	433	5,3	62.400
								50°	1.358	3,7	603	5,6	339	7,4	217	9,3	151	11,1	21.720
	NW	4000K	4000K	97	97	94	3.851	25°	4.119	1,8	1.830	2,6	1.030	3,5	659	4,4	458	5,3	65.896
								50°	1.434	3,7	637	5,6	358	7,4	229	9,3	159	11,1	22.937
	CW	5600K	5600K	97	97	94	4.493	25°	4.805	1,8	2.135	2,6	1.201	3,5	769	4,4	534	5,3	76.878
								50°	1.672	3,7	743	5,6	418	7,4	268	9,3	186	11,1	26.759
	TW	2700-6500K	4000K	95	92	93	4.233	25°	4.176	1,8	1.856	2,6	1.044	3,5	668	4,4	464	5,3	66.820
								50°	1.320	3,7	586	5,6	330	7,4	211	9,3	147	11,1	21.112
	RGBW	2700-8000K	Full Ch	85	90	90	3.093	25°	3.052	1,8	1.356	2,6	763	3,5	488	4,4	339	5,3	48.830
								50°	964	3,7	429	5,6	241	7,4	154	9,3	107	11,1	15.428
	6C	1500-20000K	Full Ch	97	92	94	3.256	25°	3.213	1,8	1.428	2,6	803	3,5	514	4,4	357	5,3	51.400
								50°	1.015	3,7	451	5,6	254	7,4	162	9,3	113	11,1	16.240
									4 m		6 m		8 m		10 m		12 m		

What is in the box

- Fixture

Accessories

How to... (video tutorial)

- [...set DMX personality and DMX address](#)
- [...emulate a halogen lamp](#)
- [...avoid acoustic and visual disturbances](#)
- [...set stand alone and master-slave](#)
- [...increase light output +20%](#)
- [...set the LED calibration](#)
- [...set the colour custom presets](#)

[User manual](#)

[Contact Sales Office](#)



Serie Lucciola	Serie Architectural	Serie Halled	Serie Hyperion						Serie Cyclorama
30W Pinspot	50W Fresnel, PC, Profile	85W Downlight	100W Fresnel, PC, Profile	200W Fresnel, PC, Profile	300W Fresnel, PC, Profile	300W Followspot	700W Fresnel, PC, Profile	700W Followspot	300W Cyclorama

- 2m H05RN-F cable with powerCON TRUE1 female cable connector
- Safety instructions

FIXTURE

- Filter frame **TC HY 200**
- 4D rotatable barndoors **PL 4 HY 200**
- C-hook for 40-50mm, M10 **GAC**
- Half coupler max 075kg, 48-50, M10 **HC/075**
- Safety rope, 80cm with spring-clamp **FUNE**
- Iris diaphragm **DIA HY**
- Rotatable gobo-holder type B **PGB HY**
- Adaptor cone with framing shutters, for market-standard fixed optics **PR HY CONE**

MOVEMENT SYSTEM

- Pole Operated, 2-way Pan and Tilt **PO/2 HY200**
- Pole Operated, 3-way Pan, Tilt and Focus **PO/3 HY200**

Serie Lucciola	Serie Architectural	Serie Halled	Serie Hyperion						Serie Cyclorama
30W Pinspot	50W Fresnel, PC, Profile	85W Downlight	100W Fresnel, PC, Profile	200W Fresnel, PC, Profile	300W Fresnel, PC, Profile	300W Followspot	700W Fresnel, PC, Profile	700W Followspot	300W Cyclorama

PHOTOMETRIC DATA

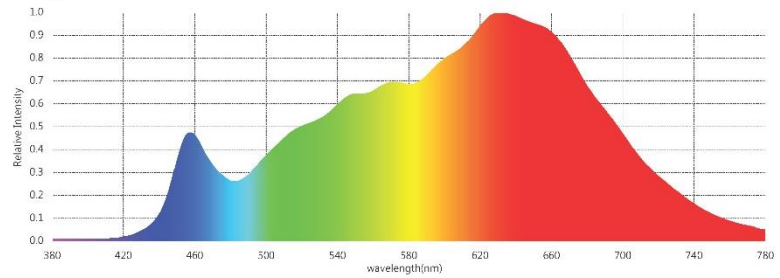
Conditions during measurements:

- LED: WW
- Test in hemi-anechoic room
- Temperature: 16°C
- Relative humidity: 61%
- Distance: 2m

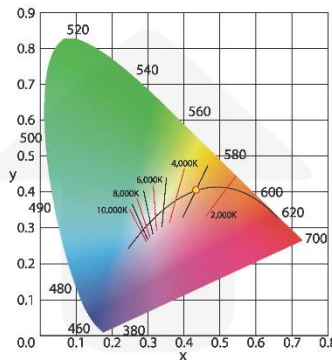
Parameters

CIE_x	0.4334
CIE_y	0.4058
CIE_u'	0.2475
CIE_v'	0.5215
CCT	3075 K
Duv	0.0012
CRI (Ra)(R1~R8)	98
CRI (Re) (R1-R15)	97
CQS	97
TLCI(Qa)	99
GAI	58
TM-30-18 Rf	94
TM-30-18 Rg	99
Illuminance	1,285 lux
Foot Candle	119.4 fc
PPFD (400-700nm)	22.01 $\mu\text{mol}/\text{m}^2\text{s}$
λ_p	631 nm
λ_D	582 nm
Purity (Pe)	50 %
SP Ratio	1.5
Circadian Stimulus	0.60
Circadian Light	1,363
Flicker Percentage	1 %
Flicker Index	0.00
Flicker Frequency	136 Hz

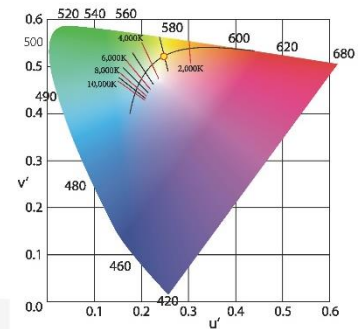
Spectrum



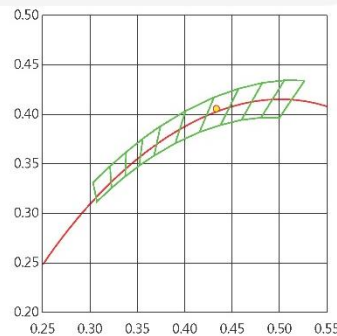
CIE 1931



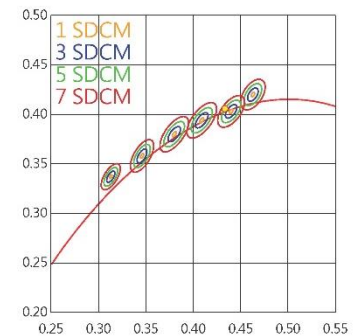
CIE 1976



C78.377 - 2017



IEC-SDCM



CRI (Re) (R1-R15)

R1	99	R6	98	R11	99
R2	99	R7	99	R12	81
R3	96	R8	98	R13	100
R4	99	R9	97	R14	97
R5	98	R10	96	R15	98

TM-30-18

