

Serie Lucciola	Serie Architectural	Serie Halled	Serie Hyperion						Serie Cyclorama
30W Pinpoint	50W Fresnel, PC, Profile	85W Downlight	100W Fresnel, PC, Profile	200W Fresnel, PC, Profile	300W Fresnel, PC, Profile	300W Followspot	700W Fresnel, PC, Profile	700W Followspot	300W Cyclorama

SOURCE

- **300W LED ARRAY**
- For **LUMINOUS FLUX** and **COLOR RENDERING INDEX (CRI)** refer to the related table

HOUSING

- Highly resistant body in **extruded aluminum** and **techno-polymer** body
- **IP 20**
- Finishing: **black (other RAL color on request)**

ELECTRICAL

- Power consumption: 300 W
- Power supply: 100-240 V – 50/60 Hz
- PF>0.94/230VAC PF>0.98/115VAC at full load

THERMAL MANAGEMENT

- Wide ventilation slots for better LED cooling with 3 selectable FAN MODE
- High efficiency heat pipe cooling system
- Ta max 40°C

CONNECTION

- Power connector: chassis PowerCON TRUE1 In/Out
- Additional cable: 2m H05RN-F cable with powerCON TRUE1 female cable connector
- DMX: XLR 5-pole In/Out panel connectors

OPTICS

- **200mm high-quality glass lens / AR coating**
- Focus: manual
- Gobo size: B (only for Profile)
- Compatible with market-standard fixed optics (only for Profile)
- For beam angles refer to the related table

OPTIONS

- Pole Operated yokes
 - ARC Motorized yokes
- more info [here](#)

COMPLIANCE

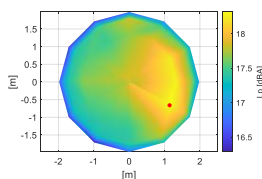
- CE
- EN 60598-1; EN 60598-2-17
- SSL Licensing Program
- Manufactured in Italy with Quality System ISO 9001:2015

NOISE LEVEL DATA (silent mode)

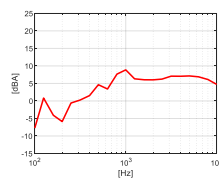
Conditions during measurements:

- Test in hemi-anechoic room
- Temperature: 22°C
- Relative humidity: 79%
- Radius of spherical measuring surface: 2m

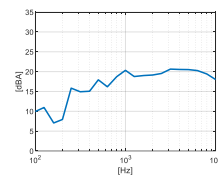
Diagram of Sound Pressure level L_p [dBA], the red point identifies the direction of maximum noise emission ¹



Sound pressure level spectrum [dBA] measured at maximum noise emission point



Sound power level spectrum L_{WA} [dBA]



Total sound pressure level L_p (0.1 – 10 kHz, ref. 2×10^{-5} Pa) at different distances²:

Distance	1 m	2 m	4 m	6 m
Sound pressure level L_p	24.3 dBA	18.3 dBA	12.3 dBA	8.8 dBA

The total sound power level L_{WA} is equal to **31.3 dBA** (0.1 – 10 kHz, ref. 1×10^{-12} W).

¹The positive direction of X axis corresponds to the spotlight central axis and points in the direction of light emission.

²Estimated Sound Pressure levels starting from the one measured at the point of maximum noise emissions at 2 m.

SOFTWARE FUNCTIONS

- **ESD**: 8bit or 16bit
- Up to 6 **DIMMING CURVE Mark-II**
- **LED DELAY**: from 0 to 2000ms
- **AMBER SHIFT**, in combination whit HALO dimming curve and LED delay, in order to emulate the performances of a halogen lamp (only for 6C version)
- PWM LED 500Hz-20KHz
- **± GREEN** in order to guarantee a fine adjustment of green component of CCT (only for 6C version)
- **OUTPUT FREQUENCY** in order to remove flickering
- **LED BOOST** in order to increase +20% the light output of a fixture when for a tint or CCT when not all LED channels are at full (only for Tunable White, RGBW, 6C versions)
- 3 selectable **FAN MODE**
- **LED CALIBRATION** in order to adjust the tints of a group of fixtures when/if they aren't aligned, despite being set with the same DMX values (only for RGBW, 6C versions)
- **SERVICE CHANNEL** in order to control all the settings that are normally set from the fixture by using a console
- **STAND-ALONE** and **MASTER AND SLAVE** in order to control one or more fixtures without using a console, creating one or multi scenes
- **DISPLAY ROTATION** and **DISPLAY ON/OFF**
- **BOARD TEMPERATURE** and **CHIP TEMPERATURE** in order to monitor how the fixture works **Mark-II**
- **WIRELESS DMX** ready **Mark-II**
- Hour-counter on single LED
- Storage and factory recovery
- Upgradable firmware via DMX/USB tool
- Advanced remote settings (**RDM**) for all parameters via DMX
- **ERROR LIST** in order to display errors that can occur

COLOR and CCT PRESETS

- Manual control **Mark-II**
 - o MANUAL PRESET: CCT (9) + LEE FILTERS (66) + custom (10)
 - o MANUAL COLOUR: LEE filters (66) + custom (19)
 - o MANUAL CCT: CCT (36)
- DMX control:
 - o LEE FILTERS channel: standard (241) + custom (14) **Mark-II**
 - o ROSCO FILTERS channel: standard (236) + custom (19) **Mark-II**
 - o CCT channel: TW (2700-6500K) / 6C/8C (1500-20000K) **Mark-II**

DIMENSIONS

FN	9.5 Kg	430x300x480 mm
PC	12.5 Kg	470x300x570 mm
PR (ZS)	15.0 Kg	470x340x760 mm
PR (ZW)	14.0 Kg	470x340x640 mm

Serie Lucciola	Serie Architectural	Serie Halled	Serie Hyperion					Serie Cyclorama	
30W Pinspot	50W Fresnel, PC, Profile	85W Downlight	100W Fresnel, PC, Profile	200W Fresnel, PC, Profile	300W Fresnel, PC, Profile	300W Followspot	700W Fresnel, PC, Profile	700W Followspot	300W Cyclorama

DMX PERSONALITIES

	White		
	1CH	3CH	6CH
	8 BIT	8 BIT	16 BIT
1 ch	DIMMER	DIMMER	DIMMER
2 ch		STROBO+STORE	DIMMER FINE
3 ch		SERVICE	DELAY
4 ch			FAN
5 ch			STROBO+STORE
6 ch			SERVICE
7 ch			
8 ch			
9 ch			
10 ch			

	Tunable White				
	EASY	SPLIT	SPLIT	STUDIO	THEATRE FULL
	8 BIT	8 BIT	16 BIT	16 BIT	16 BIT
DIMMER	DIMMER	DIMMER	DIMMER	DIMMER	DIMMER
CCT LINEAR	WW	DIMMER FINE	DIMMER FINE	DIMMER FINE	DIMMER FINE
	CW	WW	CCT PRESET	CCT LINEAR	
	STROBO+STORE	WW FINE	WW +/-	DELAY	
	SERVICE	CW	CW +/-	FAN	
		CW FINE	DELAY	STROBO+STORE	
		DELAY	FAN	SERVICE	
		FAN	STROBO+STORE		
		STROBO+STORE	SERVICE		
		SERVICE			

	RGBW				
	EASY	HSI	CMY	RGBW	FULL
	8 BIT	8 BIT	8 BIT	8 BIT	16 BIT
1 ch	DIMMER	DIMMER	DIMMER	DIMMER	DIMMER
2 ch	CCT PRESET	HUE	CYAN	RED	DIMMER FINE
3 ch	COLOUR PRESET	HUE FINE	MAGENTA	GREEN	RED
4 ch		SATURATION	YELLOW	BLUE	RED FINE
5 ch		STROBO+STORE	STROBO+STORE	WHITE	GREEN
6 ch		SERVICE	SERVICE	CCT PRESET	GREEN FINE
7 ch				COLOUR PRESET	BLUE
8 ch				STROBO+STORE	BLUE FINE
9 ch				SERVICE	WHITE
10 ch					WHITE FINE
11 ch					CCT PRESET
12 ch					COLOUR PRESET
13 ch					DELAY
14 ch					FAN
15 ch					STROBO+STORE
16 ch					SERVICE

	6C					
	EASY	HSIC	RGBACL	RGBACL	THEATER	STUDIO
	8 BIT	8 BIT	8 BIT	16 BIT	16 BIT	16 BIT
1 ch	DIMMER	DIMMER	DIMMER	DIMMER	DIMMER	DIMMER
2 ch	ROSCO FILTERS	HUE	RED	DIMMER FINE	DIMMER FINE	DIMMER FINE
3 ch	LEE FILTERS	HUE FINE	GREEN	RED	RED	RED
4 ch	CCT PRESET	SATURATION	BLUE	RED FINE	RED FINE	RED FINE
5 ch		CCT LINEAR	AMBER	GREEN	GREEN	GREEN
6 ch		STROBO+STORE	CYAN	GREEN FINE	GREEN FINE	GREEN FINE
7 ch		SERVICE	LIME	BLUE	BLUE	BLUE
8 ch			STROBO+STORE	BLUE FINE	BLUE FINE	BLUE FINE
9 ch			SERVICE	AMBER	AMBER	AMBER
10 ch				AMBER FINE	AMBER FINE	AMBER FINE
11 ch				CYAN	CYAN	CYAN
12 ch				CYAN FINE	CYAN FINE	CYAN FINE
13 ch				LIME	LIME	LIME
14 ch				LIME FINE	LIME FINE	LIME FINE
15 ch					ROSCO FILTERS	ROSCO FILTERS
16 ch					LEE FILTERS	LEE FILTERS
17 ch					SATURATION	CCT STEPS
18 ch					CCT LINEAR	GREEN +/-
19 ch					GREEN +/-	DELAY
20 ch					DELAY	FAN
21 ch					FAN	STROBO+STORE
22 ch					STROBO+STORE	SERVICE
23 ch					SERVICE	FREE 1
24 ch					FREE 1	FREE 2
25 ch					FREE 2	

Serie Lucciola	Serie Architectural	Serie Halled	Serie Hyperion						Serie Cyclorama
30W Pinspot	50W Fresnel, PC, Profile	85W Downlight	100W Fresnel, PC, Profile	200W Fresnel, PC, Profile	300W Fresnel, PC, Profile	300W Followspot	700W Fresnel, PC, Profile	700W Followspot	300W Cyclorama

LIGHT OUTPUT

Model	Type	CT	(measure at)	CRI	TLCI	TM-30	Lumen	Beam	Lux	Ø Beam	Lux	Ø Beam	Lux	Ø Beam	Lux	Ø Beam	Lux	Ø Beam	Peak CD
FN HY LED 300	WW	3200K	3200K	97	97	94	8.591	9°	12.984	0,6	5.771	0,9	3.246	1,3	2.077	1,6	1.443	1,9	207.740
								45°	1.220	3,3	542	4,9	305	6,6	195	8,2	136	9,9	19.516
	CW	5600K	5600K	97	97	94	10.107	9°	15.275	0,6	6.789	0,9	3.819	1,3	2.444	1,6	1.697	1,9	244.400
								45°	1.435	3,3	638	4,9	359	6,6	230	8,2	159	9,9	22.960
	TW	2700-6500K	5600K	95	92	93	9.096	9°	13.748	0,6	6.110	0,9	3.437	1,3	2.200	1,6	1.528	1,9	219.960
								45°	1.292	3,3	574	4,9	323	6,6	207	8,2	144	9,9	20.664
	RGBW	2700-8000K	Full Ch	85	90	90	8.666	12°	9.400	0,8	4.178	1,3	2.350	1,7	1.504	2,1	1.044	2,5	150.400
								45°	1.083	3,3	481	4,9	271	6,6	173	8,2	120	9,9	17.320
	6C	1500-20000K	Full Ch	97	92	94	7.486	12°	8.725	0,8	3.878	1,3	2.181	1,7	1.396	2,1	969	2,5	139.600
								45°	923	3,3	410	4,9	231	6,6	148	8,2	103	9,9	14.760
									4 m		6 m		8 m		10 m		12 m		

Model	Type	CT	(measure at)	CRI	TLCI	TM-30	Lumen	Beam	Lux	Ø Beam	Lux	Ø Beam	Lux	Ø Beam	Lux	Ø Beam	Lux	Ø Beam	Peak CD
PC HY LED 300	WW	3200K	3200K	97	97	94	8.628	6°	20.650	0,4	9.178	0,6	5.163	0,8	3.304	1,0	2.294	1,2	330.400
								45°	1.248	3,3	554	4,9	312	6,6	200	8,2	139	9,9	19.960
	CW	5600K	5600K	97	97	94	10.151	6°	24.294	0,4	10.797	0,6	6.074	0,8	3.887	1,0	2.699	1,2	388.706
								45°	1.468	3,3	652	4,9	367	6,6	235	8,2	163	9,9	23.482
	TW	2700-6500K	5600K	95	92	93	10.166	6°	20.875	0,4	9.278	0,6	5.219	0,8	3.340	1,0	2.319	1,2	334.000
								45°	1.608	3,3	714	4,9	402	6,6	257	8,2	179	9,9	25.720
	RGBW	2700-8000K	Full Ch	85	90	90	6.526	8°	10.838	0,6	4.817	0,8	2.709	1,1	1.734	1,4	1.204	1,7	173.400
								45°	1.007	3,3	448	4,9	252	6,6	161	8,2	112	9,9	16.116
	6C	1500-20000K	Full Ch	97	92	94	6.398	8°	10.625	0,6	4.722	0,8	2.656	1,1	1.700	1,4	1.181	1,7	170.000
								45°	988	3,3	439	4,9	247	6,6	158	8,2	110	9,9	15.800
									4 m		6 m		8 m		10 m		12 m		

Model	Type	CT	(measure at)	CRI	TLCI	TM-30	Lumen	Beam	Lux	Ø Beam	Lux	Ø Beam	Lux	Ø Beam	Lux	Ø Beam	Lux	Ø Beam	Peak CD	
PR HY LED 300 ZS	WW	3200K	3200K	97	97	94	7.036	15°	13.789	1,0	6.128	1,6	3.447	2,1	2.206	2,6	1.532	3,1	220.622	
								30°	3.683	2,1	1.637	3,2	921	4,3	589	5,3	409	6,4	58.933	
	CW	5600K	5600K	97	97	94	7.407	15°	16.222	1,0	7.210	1,6	4.056	2,1	2.596	2,6	1.802	3,1	259.556	
								30°	4.333	2,1	1.926	3,2	1.083	4,3	693	5,3	481	6,4	69.333	
	TW	2700-6500K	5600K	95	92	93	6.666	15°	14.600	1,0	6.489	1,6	3.650	2,1	2.336	2,6	1.622	3,1	233.600	
								30°	3.900	2,1	1.733	3,2	975	4,3	624	5,3	433	6,4	62.400	
	RGBW	2700-8000K	Full Ch	85	90	90	4.845	15°	9.614	1,0	4.273	1,6	2.403	2,1	1.538	2,6	1.068	3,1	153.816	
								30°	2.601	2,1	1.156	3,2	650	4,3	416	5,3	289	6,4	41.616	
	6C	1500-20000K	Full Ch	97	92	94	4.750	15°	9.425	1,0	4.189	1,6	2.356	2,1	1.508	2,6	1.047	3,1	150.800	
								30°	2.550	2,1	1.133	3,2	638	4,3	408	5,3	283	6,4	40.800	
	PR HY LED 300 ZW	WW	3200K	3200K	97	97	93	8.724	25°	5.785	1,8	2.571	2,6	1.446	3,5	926	4,4	643	5,3	92.556
									50°	2.035	3,7	905	5,6	509	7,4	326	9,3	226	11,1	32.564
CW		5600K	5600K	97	97	93	9.183	25°	6.806	1,8	3.025	2,6	1.701	3,5	1.089	4,4	756	5,3	108.889	
								50°	2.394	3,7	1.064	5,6	599	7,4	383	9,3	266	11,1	38.311	
TW		2700-6500K	5600K	95	92	93	8.265	25°	6.125	1,8	2.722	2,6	1.531	3,5	980	4,4	681	5,3	98.000	
								50°	2.155	3,7	958	5,6	539	7,4	345	9,3	239	11,1	34.480	
RGBW		2700-8000K	Full Ch	85	90	90	5.564	25°	4.055	1,8	1.802	2,6	1.014	3,5	649	4,4	451	5,3	64.872	
								50°	1.479	3,7	657	5,6	370	7,4	237	9,3	164	11,1	23.664	
6C		1500-20000K	Full Ch	97	92	94	5.455	25°	3.975	1,8	1.767	2,6	994	3,5	636	4,4	442	5,3	63.600	
								50°	1.450	3,7	644	5,6	363	7,4	232	9,3	161	11,1	23.200	
								4 m		6 m		8 m		10 m		12 m				

How to... (video tutorial)



[...set DMX personality and DMX address](#)

[...emulate a halogen lamp](#)

[...avoid acoustic and visual disturbances](#)

[... set stand alone and master-slave](#)

[...increase light output +20%](#)

[...set the LED calibration](#)

[...set the colour custom presets](#)

[User manual](#)

[Contact Sales Office](#)

Serie Lucciola	Serie Architectural	Serie Halled	Serie Hyperion						Serie Cyclorama
30W Pinspot	50W Fresnel, PC, Profile	85W Downlight	100W Fresnel, PC, Profile	200W Fresnel, PC, Profile	300W Fresnel, PC, Profile	300W Followspot	700W Fresnel, PC, Profile	700W Followspot	300W Cyclorama

What is in the box

- Fixture
- 2m H05RN-F cable with powerCON TRUE1 female cable connector
- Safety instructions

Accessories

FIXTURE

- Filter frame (Fresnel, PC) **TC S25** / (Profile) **TC HY 200**
- 4D rotatable barndoors **PL 4 HY 300**
- 8D rotatable barndoors **PL 8 HY 300**
- 4D 3-axis rotatable barndoors **PL 4 HY 300 PLUS**
- C-hook for 40-50mm, M10 **GAC**
- Half coupler max 075kg, 48-50, M10 **HC/075**
- Safety rope, 80cm with spring-clamp **FUNE**
- Iris diaphragm **DIA HY**
- Rotatable gobo-holder type B **PGB HY**
- Adaptor cone with framing shutters, for market-standard fixed optics **PR HY CONE**

MOVEMENT SYSTEM

- Pole Operated, 2-way Pan and Tilt **PO/2 HY300**
- Pole Operated, 3-way Pan, Tilt and Focus **PO/3 HY300**

Serie Lucciola	Serie Architectural	Serie Halled	Serie Hyperion						Serie Cyclorama
30W Pinspot	50W Fresnel, PC, Profile	85W Downlight	100W Fresnel, PC, Profile	200W Fresnel, PC, Profile	300W Fresnel, PC, Profile	300W Followspot	700W Fresnel, PC, Profile	700W Followspot	300W Cyclorama

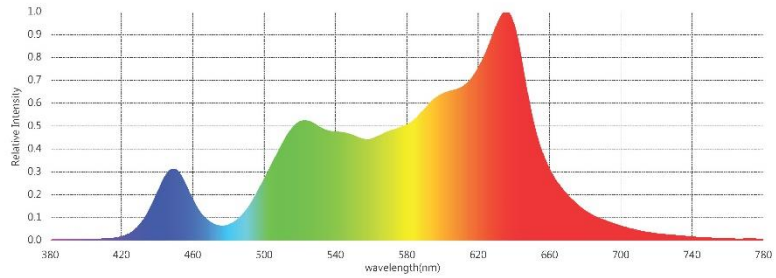
PHOTOMETRIC DATA

Conditions during measurements:

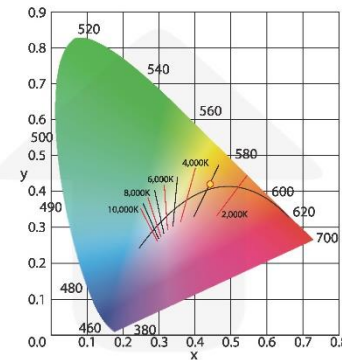
- LED: WW
- Test in hemi-anechoic room
- Temperature: 16°C
- Relative humidity: 61%
- Distance: 2m

Parameters	
CIE_x	0.4421
CIE_y	0.4203
CIE_u'	0.2470
CIE_v'	0.5284
CCT	3043 K
Duv	0.0056
CRI (Ra)(R1~R8)	95
CRI (Re) (R1-R15)	93
CQS	92
TLCI(Qa)	82
GAI	52
TM-30-18 Rf	93
TM-30-18 Rg	103
Illuminance	2,875 lux
Foot Candle	267.1 fc
PPFD (400-700nm)	41.54 $\mu\text{mol}/\text{m}^2\text{s}$
λ_p	636 nm
λ_D	581 nm
Purity (Pe)	60 %
SP Ratio	1.4
Circadian Stimulus	0.60
Circadian Light	2,691
Flicker Percentage	41 %
Flicker Index	0.11
Flicker Frequency	135 Hz

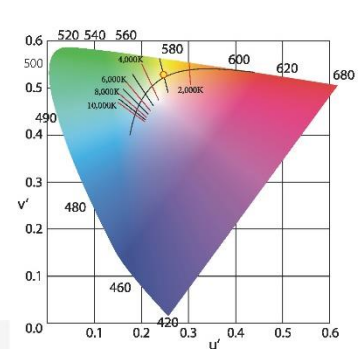
Spectrum



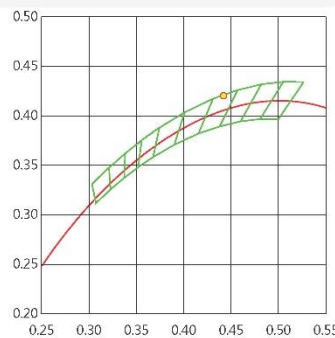
CIE 1931



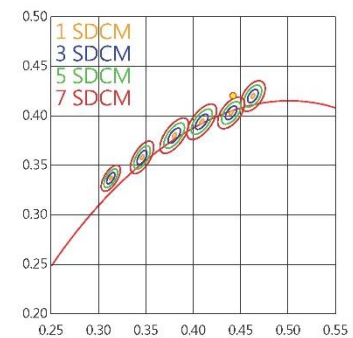
CIE 1976



C78.377 - 2017



IEC-SDCM



CRI (Re) (R1-R15)

R1	98	R6	98	R11	82
R2	96	R7	96	R12	85
R3	90	R8	97	R13	99
R4	89	R9	87	R14	93
R5	97	R10	90	R15	96

TM-30-18

