

Serie Lucciola	Serie Architectural	Serie Halled	Serie Hyperion						Serie Cyclorama
30W Pinspot	50W Fresnel, PC, Profile	85W Downlight	100W Fresnel, PC, Profile	200W Fresnel, PC, Profile	300W Fresnel, PC, Profile	300W Followspot	700W Fresnel, PC, Profile	700W Followspot	300W Cyclorama

#### SOURCE

- [FRESNEL and PC Profile](#)
- **100W LED COB**
- For **LUMINOUS FLUX** and **COLOR RENDERING INDEX (CRI)** refer to the related table

#### HOUSING

- Highly resistant body in **extruded aluminum** and **techno-polymer** body
- **IP 20**
- Finishing: **black (other RAL color on request)**

#### ELECTRICAL

- Power consumption: 100W
- Power supply: 100-240 V – 50/60 Hz
- PF>0.94/230VAC PF>0.98/115VAC at full load

#### THERMAL MANAGEMENT

- Wide ventilation slots for better LED cooling with 3 selectable FAN MODE
- High efficiency heat pipe cooling system
- Ta max 40°C

#### CONNECTION

- Power connector: chassis PowerCON TRUE1 In/Out
- Additional cable: 2m H05RN-F cable with powerCON TRUE1 female cable connector
- DMX: XLR 5-pole In/Out panel connectors

#### OPTICS

- **120mm high-quality glass lens / AR coating (PC)**
- **110mm high-quality glass lens / AR coating (Fresnel, Profile)**
- Focus: manual
- Gobo size: M or B (only for Profile)
- For beam angles refer to the related table

#### OPTIONS

- Pole Operated yokes
- ARC Motorized yokes

#### COMPLIANCE

- CE
- EN 60598-1; EN 60598-2-17
- SSL Licensing Program
- Manufactured in Italy with Quality System ISO 9001:2015

#### What is in the box

- Fixture
- 2m H05RN-F cable with powerCON TRUE1 female cable connector
- Safety instructions

#### SOFTWARE FUNCTIONS

- **ESD**: 8bit or 16bit
- Up to 6 **DIMMING CURVE Mark-II**
- **LED DELAY**: from 0 to 2000ms
- **AMBER SHIFT**, in combination whit HALO dimming curve and LED delay, in order to emulate the performances of a halogen lamp (only for 6C version)
- PWM LED 500Hz-20KHz
- **± GREEN** in order to guarantee a fine adjustment of green component of CCT (only for 6C version)
- **OUTPUT FREQUENCY** in order to remove flickering
- **LED BOOST** in order to increase +20% the light output of a fixture when for a tint or CCT when not all LED channels are at full
- **FAN MODE**: selectable from fixture (AUTO, STANDARD, SILENT) or remote from DMX
- **LED CALIBRATION** in order to adjust the tints of a group of fixtures when/if they aren't aligned, despite being set with the same DMX values (only for RGBW, 6C versions)
- **SERVICE CHANNEL** in order to control all the settings that are normally set from the fixture by using a console
- **STAND-ALONE** and **MASTER AND SLAVE** in order to control one or more fixtures without using a console, creating one or multi scenes
- **DISPLAY ROTATION** and **DISPLAY ON/OFF**
- **BOARD TEMPERATURE** and **CHIP TEMPERATURE** in order to monitor how the fixture works **Mark-II**
- **WIRELESS DMX** ready **Mark-II**
- Hour-counter on single LED
- Storage and factory recovery
- Upgradable firmware via DMX/USB tool
- Advanced remote settings (**RDM**) for all parameters via DMX
- **ERROR LIST** in order to display errors that can occur

#### COLOR and CCT PRESETS

##### RGBW:

- Manual/DMX control:
  - o standard (45) + CCT (2700-8000K) + custom (10)
- 6C:
  - Manual control **Mark-II**
    - o MANUAL PRESET: CCT (9) + LEE FILTERS (66) + custom (10)
    - o MANUAL COLOUR: LEE filters (66) + custom (19)
    - o MANUAL CCT: CCT (36)
  - DMX control:
    - o LEE FILTERS channel: standard (241) + custom (14) **Mark-II**
    - o ROSCO FILTERS channel: standard (236) + custom (19) **Mark-II**
    - o CCT channel: TW (2700-6500K) / 6C/8C (1500-20000K) **Mark-II**

#### DIMENSIONS

FN	3.5 Kg	290x220x310 mm
PC	3.5 Kg	290x220x310 mm
PR (ZS)	6.2 Kg	400x340x540 mm
PR (ZW)	6.0 Kg	400x340x450 mm

#### Accessories

##### FIXTURE

- Filter frame **TC HY 100**
- 4D rotatable barndoors **PL 4 HY 100**
- C-hook for 40-50mm, M10 **GAC**
- Half coupler max 075kg, 48-50, M10 **HC/075**
- Safety rope, 80cm with spring-clamp **FUNE**
- Iris diaphragm **DIA HY100**
- Rotatable gobo-holder type B **PGB R 100**
- Rotatable gobo-holder type M **PGM R 100**

##### MOVEMENT SYSTEM (more info [here](#))

- Pole Operated, 2-way Pan and Tilt **PO/2 HY100**
- Pole Operated, 3-way Pan, Tilt and Focus **PO/3 HY100**

Serie Lucciola	Serie Architectural	Serie Halled	Serie Hyperion						Serie Cyclorama
30W Pinspot	50W Fresnel, PC, Profile	85W Downlight	100W Fresnel, PC, Profile	200W Fresnel, PC, Profile	300W Fresnel, PC, Profile	300W Followspot	700W Fresnel, PC, Profile	700W Followspot	300W Cyclorama

## DMX PERSONALITIES

	White		
	1CH 8 BIT	2CH 8 BIT	3CH 16 BIT
	1 ch	DIMMER	DIMMER
2 ch		STROBO	DIMMER FINE
3 ch			STROBO
4 ch			
5 ch			
6 ch			
7 ch			
8 ch			
9 ch			
10 ch			

	Tunable White				
	EASY 8 BIT	SPLIT 8 BIT	SPLIT 16 BIT	STUDIO 16 BIT	THEATRE FULL 16 BIT
	DIMMER	DIMMER	DIMMER	DIMMER	DIMMER
CCT LINEAR	WW	DIMMER FINE	DIMMER FINE	DIMMER FINE	
	CW	WW	CCT PRESET	CCT LINEAR	
	STROBO+STORE	WW FINE	WW +/-	DELAY	
	SERVICE	CW	CW +/-	FAN	
		CW FINE	DELAY	STROBO+STORE	
		DELAY	FAN	SERVICE	
		FAN	STROBO+STORE		
		STROBO+STORE	SERVICE		
		SERVICE			

	RGBW				
	EASY 8 BIT	HSI 8 BIT	CMY 8 BIT	RGBW 8 BIT	FULL 16 BIT
	1 ch	DIMMER	DIMMER	DIMMER	DIMMER
2 ch	CCT PRESET	HUE	CYAN	RED	DIMMER FINE
3 ch	COLOUR PRESET	HUE FINE	MAGENTA	GREEN	RED
4 ch		SATURATION	YELLOW	BLUE	RED FINE
5 ch		STROBO+STORE	STROBO+STORE	WHITE	GREEN
6 ch		SERVICE	SERVICE	CCT PRESET	GREEN FINE
7 ch				COLOUR PRESET	BLUE
8 ch				STROBO+STORE	BLUE FINE
9 ch				SERVICE	WHITE
10 ch					WHITE FINE
11 ch					CCT PRESET
12 ch					COLOUR PRESET
13 ch					DELAY
14 ch					FAN
15 ch					STROBO+STORE
16 ch					SERVICE

	6C					
	EASY 8 BIT	HSIC 8 BIT	RGBACL+WW+CW 8 BIT	RGBACL+WW+CW 16 BIT	THEATER 16 BIT	STUDIO 16 BIT
	1 ch	DIMMER	DIMMER	DIMMER	DIMMER	DIMMER
2 ch	ROSCO FILTERS	HUE	RED	DIMMER FINE	DIMMER FINE	DIMMER FINE
3 ch	LEE FILTERS	HUE FINE	GREEN	RED	RED	RED
4 ch	CCT PRESET	SATURATION	BLUE	RED FINE	RED FINE	RED FINE
5 ch		CCT LINEAR	AMBER	GREEN	GREEN	GREEN
6 ch		STROBO+STORE	CYAN	GREEN FINE	GREEN FINE	GREEN FINE
7 ch		SERVICE	LIME	BLUE	BLUE	BLUE
8 ch			WW	BLUE FINE	BLUE FINE	BLUE FINE
9 ch			CW	AMBER	AMBER	AMBER
10 ch			STROBO+STORE	AMBER FINE	AMBER FINE	AMBER FINE
11 ch			SERVICE	CYAN	CYAN	CYAN
12 ch				CYAN FINE	CYAN FINE	CYAN FINE
13 ch				LIME	LIME	LIME
14 ch				LIME FINE	LIME FINE	LIME FINE
15 ch				WW	WW	WW
16 ch				WW FINE	WW FINE	WW FINE
17 ch				CW	CW	CW
18 ch				CW FINE	CW FINE	CW FINE
19 ch				ROSCO FILTERS	ROSCO FILTERS	ROSCO FILTERS
20 ch				LEE FILTERS	LEE FILTERS	LEE FILTERS
21 ch				SATURATION	CCT STEPS	CCT STEPS
22 ch				CCT LINEAR	GREEN +/-	GREEN +/-
23 ch				GREEN +/-	DELAY	DELAY
24 ch				DELAY	FAN	FAN
25 ch				FAN	STROBE+STORE	STROBE+STORE
26 ch				STROBO+STORE	SERVICE	SERVICE
27 ch				SERVICE	FREE 1	FREE 1
28 ch				FREE 1	FREE 2	FREE 2
29 ch				FREE 2		

Serie Lucciola	Serie Architectural	Serie Halled	Serie Hyperion						Serie Cyclorama
30W Pinpoint	50W Fresnel, PC, Profile	85W Downlight	100W Fresnel, PC, Profile	200W Fresnel, PC, Profile	300W Fresnel, PC, Profile	300W Followspot	700W Fresnel, PC, Profile	700W Followspot	300W Cyclorama

## LIGHT OUTPUT

Model	Type	(measure at)	CRI	TLCI	TM-30	Lumen	Beam	Lux	Ø Beam	Lux	Ø Beam	Lux	Ø Beam	Lux	Ø Beam	Lux	Ø Beam	Peak CD	
FN HY LED 100	WW	3000K	97	97	94	6.223	12°	1.073	0,8	477	1,3	268	1,7	172	2,1	119	2,5	17.160	
							75°	280	6,1	124	9,1	70	12,2	45	15,2	31	18,2	4.480	
	NW	4000K	97	97	94	6.572	12°	1.133	0,8	503	1,3	283	1,7	181	2,1	126	2,5	18.121	
							75°	296	6,1	131	9,1	74	12,2	47	15,2	33	18,2	4.731	
	CW	5600K	95	92	93	6.530	12°	1.321	0,8	587	1,3	330	1,7	211	2,1	147	2,5	21.141	
							75°	345	6,1	153	9,1	86	12,2	55	15,2	38	18,2	5.519	
	TW	2700-6500K	95	92	93	6.530	11°	5.906	0,8	2.625	1,1	1.477	1,5	945	1,9	656	2,3	94.500	
							50°	965	3,7	429	5,6	241	7,4	154	9,3	107	11,1	15.440	
	RGBW	2700-8000K	85	90	90	4.506	11°	5.198	0,8	2.310	1,1	1.299	1,5	832	1,9	578	2,3	83.160	
							50°	849	3,7	377	5,6	212	7,4	136	9,3	94	11,1	13.587	
	6C	1500-20000K	94	92	94	5.224	11°	4.725	0,8	2.100	1,1	1.181	1,5	756	1,9	525	2,3	75.600	
							50°	772	3,7	343	5,6	193	7,4	124	9,3	86	11,1	12.352	
										4 m		6 m		8 m		10 m		12 m	

Model	Type	(measure at)	CRI	TLCI	TM-30	Lumen	Beam	Lux	Ø Beam	Lux	Ø Beam	Lux	Ø Beam	Lux	Ø Beam	Lux	Ø Beam	Peak CD	
PC HY LED 100	WW	3000K	97	97	94	6.208	15°	1.044	1,0	464	1,6	261	2,1	167	2,6	116	3,1	16.700	
							75°	274	6,1	122	9,1	68	12,2	44	15,2	30	18,2	4.380	
	NW	4000K	97	97	94	6.556	15°	1.102	1,0	490	1,6	276	2,1	176	2,6	122	3,1	17.636	
							75°	289	6,1	128	9,1	72	12,2	46	15,2	32	18,2	4.625	
	CW	5600K	95	92	93	5.991	15°	1.286	1,0	572	1,6	321	2,1	206	2,6	143	3,1	20.575	
							75°	337	6,1	150	9,1	84	12,2	54	15,2	37	18,2	5.396	
	TW	2700-6500K	95	92	93	5.991	12°	4.519	0,8	2.008	1,3	1.130	1,7	723	2,1	502	2,5	72.300	
							50°	970	3,7	431	5,6	243	7,4	155	9,3	108	11,1	15.520	
	RGBW	2700-8000K	85	90	90	4.425	12°	3.977	0,8	1.767	1,3	994	1,7	636	2,1	442	2,5	63.624	
							50°	854	3,7	379	5,6	213	7,4	137	9,3	95	11,1	13.658	
	6C	1500-20000K	94	92	94	4.793	12°	3.615	0,8	1.607	1,3	904	1,7	578	2,1	402	2,5	57.840	
							50°	776	3,7	345	5,6	194	7,4	124	9,3	86	11,1	12.416	
										4 m		6 m		8 m		10 m		12 m	

How to... (video tutorial)

Serie Lucciola	Serie Architectural	Serie Halled	Serie Hyperion						Serie Cyclorama
30W Pinspot	50W Fresnel, PC, Profile	85W Downlight	100W Fresnel, PC, Profile	200W Fresnel, PC, Profile	300W Fresnel, PC, Profile	300W Followspot	700W Fresnel, PC, Profile	700W Followspot	300W Cyclorama

Model	Type	(measure at)	CRI	TLCI	TM-30	Lumen	Beam	Lux	Ø Beam	Lux	Ø Beam	Lux	Ø Beam	Lux	Ø Beam	Lux	Ø Beam	Peak CD	
PR HY LED 100 ZS	WW	3000K	97	97	94	2.347	20°	1.740	1,4	773	2,1	435	2,8	278	3,5	193	4,2	27.840	
							38°	978	2,7	434	4,1	244	5,5	156	6,8	109	8,2	15.640	
	NW	4000K	97	97	94	2.479	20°	1.740	1,4	773	2,1	435	2,8	278	3,5	193	4,2	27.840	
							38°	978	2,7	434	4,1	244	5,5	156	6,8	109	8,2	15.640	
	CW	5600K	97	97	94	2.892	20°	2.030	1,4	902	2,1	507	2,8	325	3,5	226	4,2	32.480	
							38°	1.140	2,7	507	4,1	285	5,5	182	6,8	127	8,2	18.246	
	TW	2700-6500K	95	92	93	2.620	15°	7.578	1,0	3.368	1,6	1.895	2,1	1.213	2,6	842	3,1	121.250	
							30°	2.627	2,1	1.168	3,2	657	4,3	420	5,3	292	6,4	42.031	
	RGBW	2700-8000K	85	90	90	1.991	15°	5.759	1,0	2.560	1,6	1.440	2,1	922	2,6	640	3,1	92.150	
							30°	1.996	2,1	887	3,2	499	4,3	319	5,3	222	6,4	31.944	
	6C	1500-20000K	94	92	94	2.096	15°	6.063	1,0	2.694	1,6	1.516	2,1	970	2,6	674	3,1	97.000	
							30°	2.102	2,1	934	3,2	525	4,3	336	5,3	234	6,4	33.625	
	PR HY LED 100 ZW	WW	3000K	97	97	94	3.063	35°	1.255	2,5	558	3,8	314	5,0	201	6,3	139	7,5	20.080
								50°	705	3,7	313	5,6	176	7,4	113	9,3	78	11,1	11.280
NW		4000K	97	97	94	3.235	35°	1.325	2,5	589	3,8	331	5,0	212	6,3	147	7,5	21.205	
							50°	745	3,7	331	5,6	186	7,4	119	9,3	83	11,1	11.912	
CW		5600K	97	97	94	3.774	35°	1.633	2,5	726	3,8	408	5,0	261	6,3	181	7,5	26.125	
							50°	917	3,7	408	5,6	229	7,4	147	9,3	102	11,1	14.676	
TW		2700-6500K	95	92	93	3.555	25°	4.753	1,8	2.113	2,6	1.188	3,5	761	4,4	528	5,3	76.050	
							40°	1.930	2,9	858	4,3	482	5,8	309	7,2	214	8,7	30.875	
RGBW		2700-8000K	85	90	90	2.598	25°	3.473	1,8	1.544	2,6	868	3,5	556	4,4	386	5,3	55.575	
							40°	1.410	2,9	627	4,3	353	5,8	226	7,2	157	8,7	22.563	
6C		1500-20000K	94	92	94	2.735	25°	3.656	1,8	1.625	2,6	914	3,5	585	4,4	406	5,3	58.500	
							40°	1.484	2,9	660	4,3	371	5,8	238	7,2	165	8,7	23.750	
									4 m	6 m	8 m	10 m	12 m						

Serie Lucciola	Serie Architectural	Serie Halled	Serie Hyperion						Serie Cyclorama
30W Pinspot	50W Fresnel, PC, Profile	85W Downlight	100W Fresnel, PC, Profile	200W Fresnel, PC, Profile	300W Fresnel, PC, Profile	300W Followspot	700W Fresnel, PC, Profile	700W Followspot	300W Cyclorama

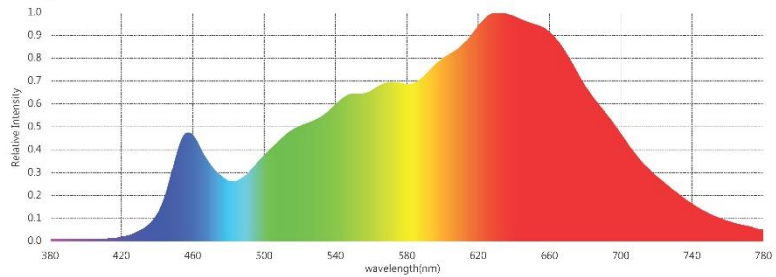
**PHOTOMETRIC DATA**

Conditions during measurements:

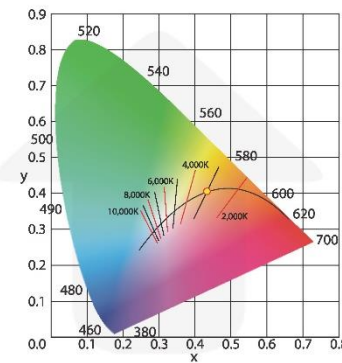
- LED: WW
- Test in hemi-anechoic room
- Temperature: 16°C
- Relative humidity: 61%
- Distance: 2m

Parameters	
CIE_x	0.4334
CIE_y	0.4058
CIE_u'	0.2475
CIE_v'	0.5215
CCT	3075 K
Duv	0.0012
CRI (Ra)(R1~R8)	98
CRI (Re) (R1-R15)	97
CQS	97
TLCI(Qa)	99
GAI	58
TM-30-18 Rf	94
TM-30-18 Rg	99
Illuminance	1,285 lux
Foot Candle	119.4 fc
PPFD (400-700nm)	22.01 $\mu\text{mol}/\text{m}^2\text{s}$
$\lambda_p$	631 nm
$\lambda_D$	582 nm
Purity (Pe)	50 %
SP Ratio	1.5
Circadian Stimulus	0.60
Circadian Light	1,363
Flicker Percentage	1 %
Flicker Index	0.00
Flicker Frequency	136 Hz

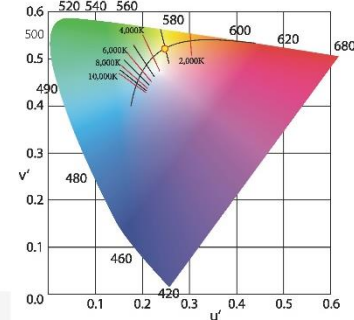
**Spectrum**



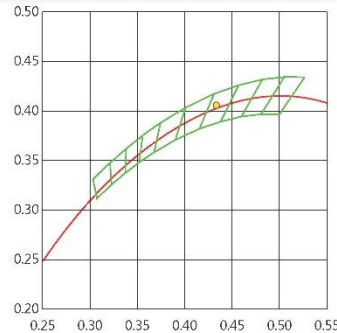
**CIE 1931**



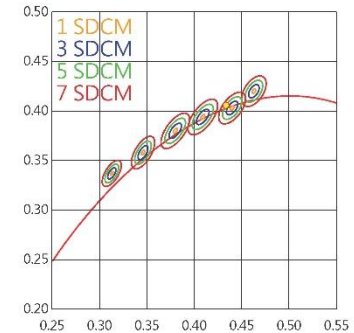
**CIE 1976**



**C78.377 - 2017**



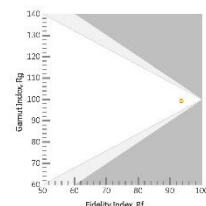
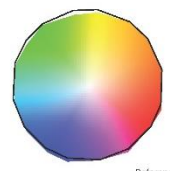
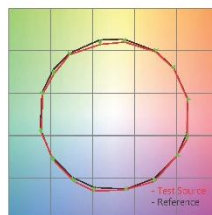
**IEC-SDCM**



**CRI (Re) (R1-R15)**

R1	99	R6	98	R11	99
R2	99	R7	99	R12	81
R3	96	R8	98	R13	100
R4	99	R9	97	R14	97
R5	98	R10	96	R15	98

**TM-30-18**



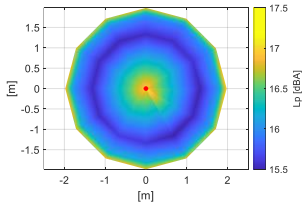
Serie Lucciola	Serie Architectural	Serie Halled	Serie Hyperion						Serie Cyclorama
30W Pinspot	50W Fresnel, PC, Profile	85W Downlight	100W Fresnel, PC, Profile	200W Fresnel, PC, Profile	300W Fresnel, PC, Profile	300W Followspot	700W Fresnel, PC, Profile	700W Followspot	300W Cyclorama

## NOISE LEVEL DATA (silent mode)

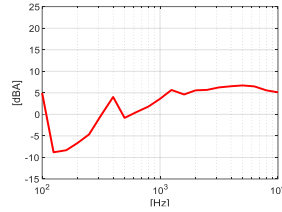
Conditions during measurements:

- Test in hemi-anechoic room
- Temperature: 22°C
- Relative humidity: 79%
- Radius of spherical measuring surface: 2m

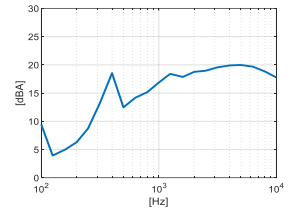
Diagram of Sound Pressure level  $L_p$  [dBA], the red point identifies the direction of maximum noise emission <sup>1</sup>



Sound pressure level spectrum [dBA] measured at maximum noise emission point



Sound power level spectrum  $L_{WA}$  [dBA]



Total sound pressure level  $L_p$  (0.1 – 10 kHz, ref.  $2 \times 10^{-5}$  Pa) at different distances<sup>2</sup>:

Distance	1 m	2 m	4 m	6 m
Sound pressure level LP	23.1 dBA	17.1 dBA	11.1 dBA	7.6 dBA

The total sound power level  $L_{WA}$  is equal to **30.2 dBA** (0.1 – 10 kHz, ref.  $1 \times 10^{-12}$  W).

<sup>1</sup>The positive direction of X axis corresponds to the spotlight central axis and points in the direction of light emission.

<sup>2</sup>Estimated Sound Pressure levels starting from the one measured at the point of maximum noise emissions at 2 m.

How to... (video tutorial)