



PRODUCT  
CATALOGUE 2024

# The art of illumination.



**SPOTLIGHT**<sup>TM</sup>  
professional lighting for the performing arts



# SPOTLIGHT

## Professional lighting since 1969

**Spotlight** has been designing and crafting **professional lighting fixtures since 1969**, catering to the **world's foremost events and infrastructure**. Spotlight's expertise lies in providing illumination solutions for prestigious venues and cultural spaces where light plays a pivotal role in creating captivating and emotional atmospheres.

We take pride in our deep technological know-how, enabling us to create **high-performance** lighting fixtures with a **unique design**. All our products are proudly made in Italy, originating from **cutting-edge** laboratories. Here, a dedicated team of professionals works every day to design and refine projectors that have over the years become synonymous with quality and reliability.

Furthermore, each fixture in our catalog can be **customized** to meet specific customer requirements, allowing us to bring to life **unique solutions** that satisfy even the most demanding lighting designers and challenging projects.

## CERTIFIED QUALITY

- **CE**  
Compliance with all European Community obligations, allowing the free trade of our products on the market.
- **EN 60598-1; EN 60598-2-17**  
Safety product certifications.
- **ISO 9001:2015**  
Quality management system.
- **BS EN ISO 3744:2010**  
Audiometric measurements and noise tests on our products in collaboration with Politecnico di Milano (PoliMi Sound and Vibration Lab - PSVL).
- **SSL LICENSING PROGRAM**  
LED luminaires international Licensing Program.
- **ENVIROMENTAL SUSTAINABILITY**  
Impact on climate change (currently being implemented).





100W | 200W | 300W | 700W

300W

85W

30W

HYPERION Series

**Fresnel**

**PC**

**Profile**

**Followspot**

CYCLORAMA Series

**Cyclorama**

HALLED Series

**Downlight**

LUT Series | CANOVA Series

**Pinspot**



Here you can find all the details regarding our fixtures, such as:

- Short form
- Datasheets
- User manual
- Showbook
- GDTF file
- DWG files
- LDT files
- Other tools







100W | 200W | 300W | 700W

HYPERION Series

**Fresnel**

**PC**

**Profile**

**Followspot**



Here you can find all the details regarding our fixtures, such as:

- Short form
- Datasheets
- User manual
- Showbook
- GDTF file
- DWG files
- LDT files
- Other tools





## Fresnel

100W | 200W | 300W | 700W

The Fresnel fixtures produce a cone of light that gives an even field of light with soft edges.

These fixtures allow accent lighting of almost any object without producing sharp contrasts between the surface being lit and the surrounding area.

Projectors featuring a fresnel lens, identifiable by their distinct surface characterized by concentric “steps,” facilitate a broad and even dispersion of the light beam. This results in a smooth transition between illuminated and shadowed areas.



## PC

100W | 200W | 300W | 700W

The PC fixtures produce a light beam that gives more defined edges and a greater concentration of light.

These fixtures are employed to achieve those focused and even accent lighting compared to the Fresnel version. The PC spot is normally recommended for use in applications where the area around the object being lit needs to remain completely dark and contrast between light and shade needs to be more defined.

Projectors featuring a plano-convex lens, identified by a flat surface on one side and a smooth, convex surface on the other.



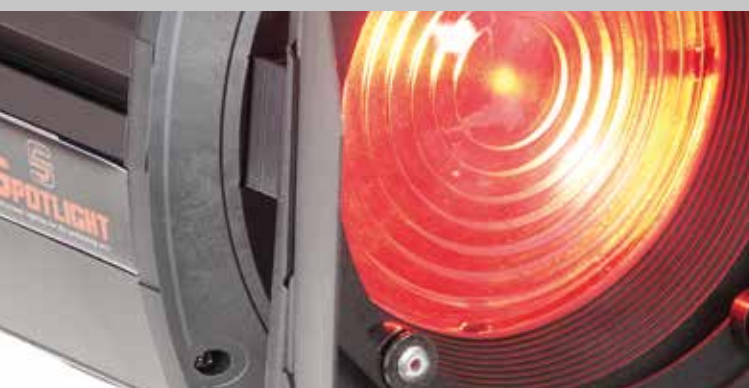
## Profile

100W | 200W | 300W | 700W

The Profile projectors, primarily utilized for accent and precision lighting, are chosen for shaping geometric forms and figures such as paintings or architectural elements.

Additionally, they serve the purpose of projecting logos and images, often referred to as gobos.

Projectors are outfitted with two adjustable built-in lenses (focus lens and zoom lens) enabling the creation of projections with precise outlines (in focus) and adjustable width (zoom).





## Followspot

300W | 700W

Followspots feature an optical and focus adjustment system akin to Profiles, yet they stand out by being mounted on ground-based aiming systems, known as stands, which enable fluid and balanced movement of the fixture.

Diverging from Profiles, Followspots are specifically designed to facilitate direct and manual aiming control by a lighting operator.

Their primary application is in long-distance accent lighting, particularly in situations where the lighting operator needs to manually track the movements of a performer on stage, especially when their positions are not predetermined.

These fixtures find frequent use in expansive concerts and live events or positioned at the rear of opera theater galleries to consistently illuminate the primary performers.



LASER POINTER



DOUBLE SIDE BAR



ROTATABLE OPTICS



MANUAL DIMMER CONTROL



MANUAL COLOUR CHANGER



FROST FILTER



SOFT-TOUCH HANDLES

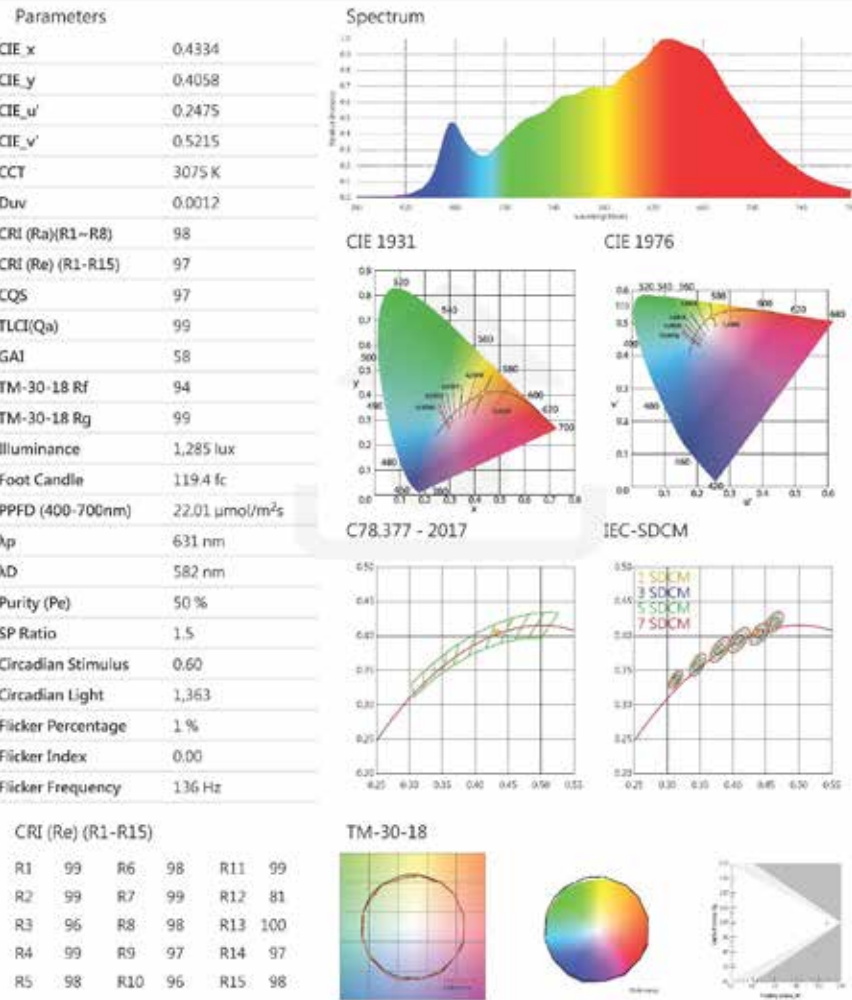


Applications



LED sources

We offer the widest range of professional lighting fixtures mounting the following LED sources.



	WHITE		WHITE	TUNABLE WHITE
Kelvin	3000 K (WW)	4000 K (NW)	5600 K (CW)	2700-6500 K
CRI	97			95
TLCI	97			92
TM-30	94			93

	RGBW	6C	8C
Kelvin	2700-8000 K	1500-20000 K	1500-20000 K
CRI	85	97	97
TLCI	90	92	92
TM-30	90	94	94





## Housing

### A STRONG HOUSING

The housing is IP20 rating, made by rugged, highly resistant extruded aluminum, free of defects such as burrs, pits and malformations, in combination with lightweight fiber glass enforced hammer proof techno-polymer parts.

The housing doesn't present any sharp edge and is made with a durable yet lightweight and rustproof construction with excellent mechanical strength for longer life also in presence of humidity.

Finish is shockproof with anti-scratch epoxy raisin powder coating non-reflective black finish with electrostatic application.

The fixture has a rugged rustproof aluminum yoke, reversible and adjustable in height, with fast balancing technology, mounted into extruded aluminum sliding rail for any positioning of the yoke.

### SUPER BRIGHT DISPLAY

The fixture has a back-side display equipped with 4 buttons for local control and setup.

To avoid unwanted light emission, the display can be turned off.



## LOCAL ENCODERS

The fixtures can be controlled by local encoders and offer a list of presets for instant access to colors, also without DMX or lighting desk.

The software allows to able/disable the encoders.

If the encoders are active:

- in absence of DMX signal the fixture is controlled via encoders
- in presence of DMX signal, the encoders are ignored
- if DMX signal is removed or lost, the last DMX level is kept until you act on the encoders, which will set the new value

If the encoders are disable the fixture can be controlled only via DMX (or MASTER-SLAVE function).





## Optical & Focusing

### SUPER-SOFT and PRECISE ADJUSTEMENT

The projection has a very precise variable beam angle fine adjustment without jerkins.

#### FRESNEL & PC

The focusing is made by very accurate soft fine-tuning endless screw zoom mechanism placed inside the housing in order to guarantee that the size and balance of the fixture remain stable in any position, even with barndoors and filter frames in front.

The optical system guarantees a powerful uniform high-quality light output without pixilation.

The optical lenses are mounted onto extended holders to allow best ventilation.

#### FRESNEL & PC

mount high-quality optical borosilicate glass lenses.

#### PROFILE

mount high-quality glass lenses with AR anti reflex coating.

## Accessories

### WIRELESS DMX



### BARN DOORS



### MOVEMENT SYSTEMS





## Noise & Thermal Management

All the fixtures utilize an advanced thermal management system to maintain LED life to an average of 70% intensity after 54,000 hours of use.

The fixtures have a double and efficient cooling system:

- **passive** for a dissipation of heat by natural convection.
- **active** for a forced dissipation of heat using a fan.

The passive natural heat convection is guaranteed by excellent LED cooling due to very large and effective double labyrinth dissipation, which at the same time avoid any light spillage over the entire top and the back part of the fixture.

The active cooling system is guaranteed by a forced dissipation of heat using a fan, allowing to intervene on the speed and therefore on the noise of the fans.

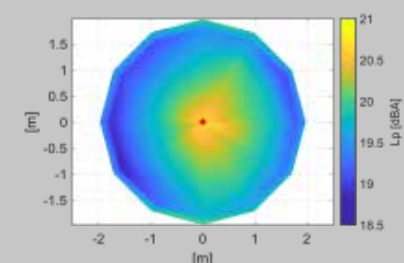


The thermal management system includes multiple temperature sensors to avoid an early LED deterioration.

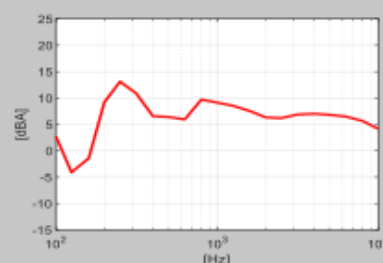
The thermal management includes multiple temperature sensors within the housing to include:

- LED TEMPERATURE
- BOARD TEMPERATURE
- MICRO-PROCESSOR TEMPERATURE
- POWERSUPPLY TEMPERATURE

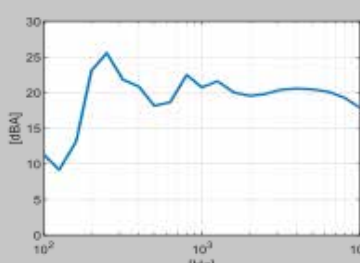
Diagram of Sound Pressure level L<sub>p</sub> [dBA], the red point identifies the direction of maximum noise emission 1



Sound pressure level spectrum [dBA] measured at maximum noise emission point



Sound power level spectrum L<sub>WA</sub> [dBA]



## Electrical & Connections

### POWER SUPPLY:

The fixtures have the power supply driver and dimmer electronic integrated on board.

The fixtures are equipped with an internal auto sensing power supply with an input range from 100V to 240V - 50/60 Hz protect by on board fuse inside the unit.

PF>0.94/230VAC PF>0.98/115VAC at full load

Power factor correction: 0,9

### POWER CONNECTOR:

- Input connector: lockable Neutrik® PowerCON True1 TOP
- Through connector: a lockable Neutrik® PowerCON True1 TOP

The fixtures support power in and through operation up to 16A.

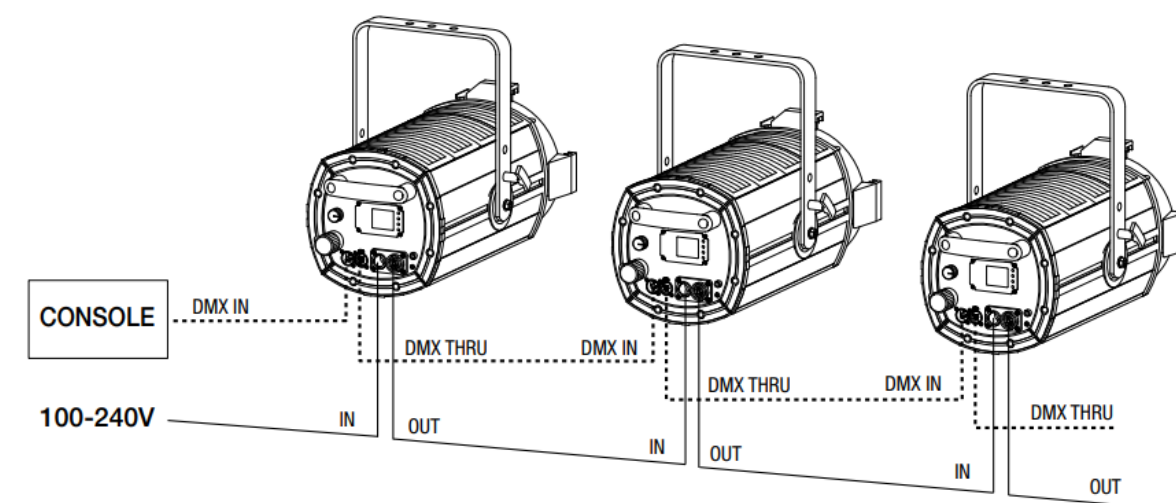
The fixtures have an additional 2m H05RN-F 3G cable with Neutrik® powerCON TRUE1 female cable connector and bare end on the other side, capable to mount any optional plug system.



### CONTROL (DMX SIGNAL):

- XLR 5-pole in/out panel connectors

The fixtures can be linked together with standard DMX cable.





## Software & Functions...

### ONE SINGLE FIXTURE WITH MANY DMX PERSONALITIES

In order to control the fixtures via lighting desk, the software allows to:

- assign each one a **DMX ADDRESS**.
- choose a **DMX PERSONALITY** based on the parameters of the luminaire you want to control and the channels available on the console.

White 85-100-200 1 / 2 / 3 ch

White 300-700 1 / 3 / 6 ch

Tunable White 2 / 5 / 7 / 9 / 10 ch

RGBW 3 / 6 / 7 / 9 / 16 ch

6C 4 / 7 / 9 / 14 / 24 / 25 ch

8C 4 / 7 / 11 / 18 / 28 / 29 ch

### SHHHH!!!! WE'RE SUPER SILENT!

The FAN MODE is selectable from the fixture or by remote control and allows the following options:

- **AUTO:** the fans are automatically adjusted based on the LED temperature.
- **STANDARD:** the fans are always kept at the default value.
- **SILENT:** the silent mode allows to intervene on the speed and therefore on the noise of the fans, that are always kept at the minimum value and in case of critical temperatures of the LED it automatically reduces the brightness.

### UP TO 6 DIFFERENT DIMMING CURVES

The fixtures offer the possibility to choose one of the following dimming curves, each of them optimized for smooth dimming at low intensities and extended fading times:

- **LINEAR**
- **QUADRATIC**
- **S**
- **HALOGEN**
- **GAMMA 2.6**
- **GAMMA 2.8**

Intensity can be controllable via **8 bit or 16 bit** mode (for high-resolution dimming) without any flickering, stepping or jumping.

The fixtures guarantee a very smooth dimming on intensity from 0% to 100% and vice-versa.

A special algorithm ensures that the color temperature remains constant during dimming.

### REMOVE FLICKERING EFFECT

The flickering effect is manifested during a shooting when the emission frequency of the LED conflicts with the video camera brush scan and can be solved by acting on the fixture parameters.

The fixtures have adjustable PWM frequency **from 500Hz up to 20,000hz** to avoid flicker on cameras.

...in addition for

RGBW

6C

8C

### RECALL A TINT FROM THE LIBRARY OR CREATE YOUR OWN

The fixtures have dedicated channels for:

- **LEE filters** (241 colors)
- **ROSCO filters** (236 colors) and
- some free channels to create custom tints

### ARE YOU A NOSTALGIC LIGHTING DESIGNER? YOU CAN EMULATE THE PERFORMANCES OF THE HALOGEN LAMP

To satisfy the most nostalgic lighting designers and to guarantee the natural perception of the human eye, it is not enough that a LED source can simulate the static light of a halogen lamp, but it is also important to reproduce its dynamic behavior.

The fixtures can guarantee the following behaviors:

- the typical dimming curve of the halogen lamp.
- the standard delay of the halogen lamp (1000 ms).
- the typical dim to warm to which a halogen lamp tends when decreasing the lighting emission (also called amber shift).

### ADJUST THE GREEN COMPONENT FOR A BETTER WHITE!

The fixtures allow also a fine tuning of the green component of a selected CCT.

### NO LIGHTING DESK? NO PROBLEM

The fixtures offer the possibility to control one or more fixtures without using a lighting desk, allowing operator to create one or more static colors and to define the duration and sequence of each one.

The function can be set:

- on a single fixture (**stand alone**) or
- on a group of fixtures; in this second case it is necessary to define the **master** fixture and the **slave** ones.

### ABLE TO CALIBRATE LED COLOURS

When using a group of fixtures it may happen that one or more of them, despite being set with the same DMX values, has different color component to be "corrected" to make the tint uniform to that of the other fixtures. The fixtures allow to modify the spectrometric curve of the LED source, intervening on the contribution of the single color of the array.

### INCREASE THE LIGHT OUTPUT!

When for a tint or a CCT not all LED channels are at full, the fixture can increase the light output to achieve maximum efficiency of the luminaire.

A microprocessor monitors the working temperature of all the components and updates the source control parameters in real time to avoid any overheating and consequently putting the lifespan on risk.





300W

## CYCLORAMA Series

### Cyclorama



Here you can find all the details regarding our fixtures, such as:

- Short form
- Datasheets
- User manual
- Showbook
- GDTF file
- DWG files
- LDT files
- Other tools





### Wide horizontal beam of all colors

The projector is equipped with an asymmetrical optical system designed to illuminate large surfaces with the widest and most uniform light beam possible.

With the extremely wide horizontal beam and the possibility to generate with LEDs an almost infinite range of colours, you get significant savings both in the number of luminaires needed and in the power used.

CYC LED is a real asymmetrical wall washer designed for theatrical, architectural and broadcasting applications.

With just 300-Watt LED full color, you'll get a more even wash and brighter light output than a traditional halogen 1000-Watt white light.



### A real asymmetrical wall washer

300W

The fixture uniformly illuminates any type of background or backdrop to create the right atmosphere in contexts where the right colors and lights are essential.





## Housing

### A STRONG HOUSING

The housing is IP20 rating, made by rugged, highly resistant extruded aluminum, free of defects such as burrs, pits and malformations, in combination with lightweight fiberglass reinforced hammer proof technopolymer parts.

The housing doesn't present any sharp edge and is made with a durable yet lightweight and rustproof construction with excellent mechanical strength for longer life also in presence of high humidity.

Finish is shockproof with anti-scratch epoxy resin powder coating nonreflective black finish with electrostatic application.

### SUPER BRIGHT DISPLAY

The fixture has a back-side display equipped with 4 buttons for local control and setup.

To avoid unwanted light emission, the display can be turned off.

If the fixture is mounted "upside down" it is also possible to rotate the display to make it easier to read.

### LOCAL ENCODERS

The fixtures can be controlled by local encoders and offer a list of presets for instant access to colors, also without DMX or lighting desk.

The software allows to able/disable the encoders.

If the encoders are active:

- in absence of DMX signal the fixture is controlled via encoders
- in presence of DMX signal, the encoders are ignored
- if DMX signal is removed or lost, the last DMX level is kept until you act on the encoders, which will set the new value

If the encoders are disable the fixture can be controlled only via DMX (or MASTER-SLAVE function).

## Optical & Focusing

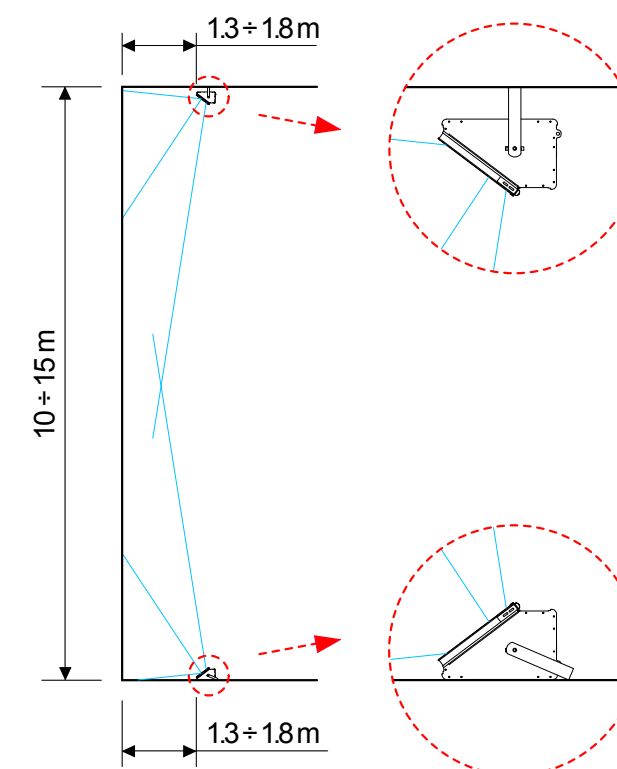
### MOUNTING

The fixture is designed to be positioned on the ground or mounted upside down on a truss to illuminate the backdrops from above.

The fixture works also with not perfect parallel walls or curved screens without overlapping hart-projection-edges or dark light gaps

The fixture offers the possibility to place it:

- side by side to each other increasing the intensities and rainbow color effects or
- every 3m, in line with other lights, without the need of a dedicated truss or suspension pipe
- The fixture is a true asymmetrical highly efficient optical floodlight and wall washer designed to deliver powerful, smooth coverage of a huge variety of pastel colors, allowing the even illumination of an area of approximately 6 meters wide and 7 meters in height, positioned at a distance from the backdrop of only 1.5 meters making a uniform projection without pixilation effects.



You can use the CYC LED as a replacement of the soft boxes in TV applications.



## Accessories

### MOVEMENT SYSTEMS





## Noise & Thermal Management

All the fixtures utilize an advanced thermal management system to maintain LED life to an average of 70% intensity after 54,000 hours of use.

The fixtures have a double and efficient cooling system:

- **passive** for a dissipation of heat by natural convection and
- **active** for a forced dissipation of heat using a fan

The active cooling system is guaranteed by a forced dissipation of heat using a fan, allowing to intervene on the speed and therefore on the noise of the fans.

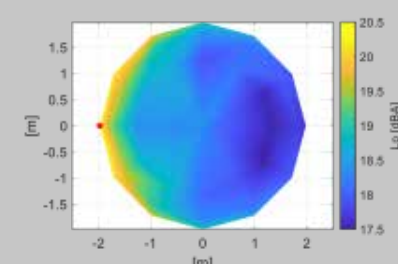
The thermal management system includes multiple temperature sensors to avoid an early LED deterioration.

The thermal management includes multiple temperature sensors within the housing to include:

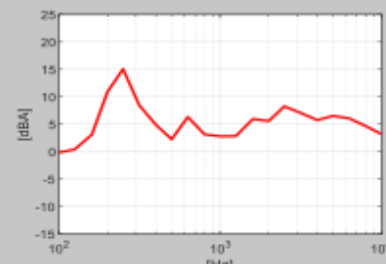
- LED TEMPERATURE
- BOARD TEMPERATURE
- MICRO-PROCESSOR TEMPERATURE
- POWERSUPPLY TEMPERATURE



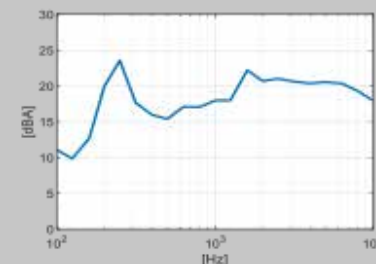
Diagram of Sound Pressure level L<sub>p</sub> [dBA], the red point identifies the direction of maximum noise emission 1



Sound pressure level spectrum [dBA] measured at maximum noise emission point



Sound power level spectrum L<sub>WA</sub> [dBA]



## Electrical & Connections

### POWER SUPPLY:

The fixtures have the power supply driver and dimmer electronic integrated on board.

The fixture are equipped with an internal auto sensing power supply with an input range from 100V to 240V - 50/60 Hz protect by on board fuse inside the unit.

PF>0.94/230VAC PF>0.98/115VAC at full load

Power factor correction: 0,9

### POWER CONNECTOR:

- Input connector: lockable Neutrik® PowerCON True1 TOP
- Through connector: a lockable Neutrik® PowerCON True1 TOP

The fixtures support power in and thru operation up to 16A.

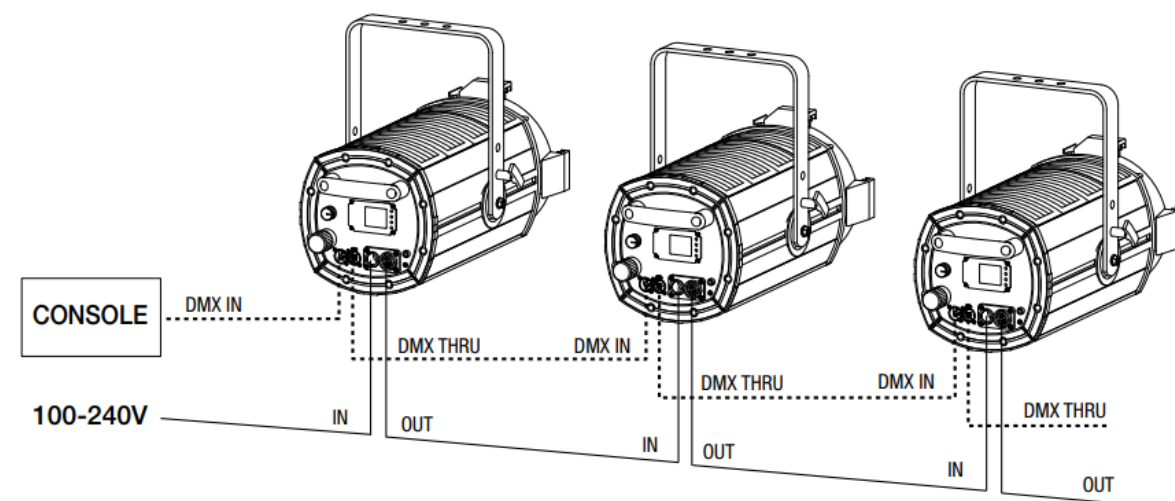
The fixtures have an additional 2m H05RN-F 3G cable with Neutrik® powerCON TRUE1 female cable connector and bare end on the other side, capable to mount any optional plug system.



### CONTROL (DMX SIGNAL):

- XLR 5-pole in/out panel connectors

The fixtures can be linked together with standard DMX cable.





## Software & Functions...

### ONE SINGLE FIXTURE WITH MANY DMX PERSONALITIES

In order to control the fixtures via lighting desk, the software allows to:

- assign each one a **DMX ADDRESS** and
- choose a **DMX PERSONALITY** based on the parameters of the luminaire you want to control and the channels available on the console.

**RGBW** 3 / 6 / 7 / 9 / 16 ch

### SHHHH!!!! WE'RE SUPER SILENT!

The FAN MODE is selectable from the fixture or by remote control and allows the following options:

- **AUTO:** the fans are automatically adjusted based on the LED temperature
- **STANDARD:** the fans are always kept at the default value
- **SILENT:** the silent mode allows to intervene on the speed and therefore on the noise of the fans, that are always kept at the minimum value and in case of critical temperatures of the LED it automatically reduces brightness.

### UP TO 3 DIFFERENT DIMMING CURVES

The fixtures offer the possibility to choose one of the following dimming curves, each of them optimized for smooth dimming at low intensities and extended fading times:

- **LINEAR**
- **QUADRATIC**
- **HALOGEN**

Intensity can be controllable via **8 bit or 16 bit** mode (for high-resolution dimming) without any flickering, stepping or jumping.

The fixtures guarantee a very smooth dimming on intensity from 0% to 100% and vice-versa.

A special algorithm ensures that the color temperature remains constant during dimming.

### REMOVE FLICKERING EFFECT

The flickering effect is manifested during a shooting when the emission frequency of the LED conflicts with the video camera brush scan and can be solved by acting on the fixture parameters.

The fixtures have adjustable PWM frequency **from 500Hz up to 20,000hz** to avoid flicker on cameras.

### RECALL A TINT FROM THE LIBRARY OR CREATE YOUR OWN

The fixtures have dedicated channels, for:

- **LEE filters** (241 colors).
- **ROSCO filters** (236 colors) and
- some free channels to create custom tints.

### ARE YOU A NOSTALGIC LIGHTING DESIGNER? YOU CAN EMULATE THE PERFORMANCES OF THE HALOGEN LAMP

To satisfy the most nostalgic lighting designers and to guarantee the natural perception of the human eye, it is not enough that a LED source can simulate the static light of a halogen lamp, but it is also important to reproduce its dynamic behavior.

The fixtures can guarantee the following behaviors:

- the typical dimming curve of the halogen lamp.
- the standard delay of the halogen lamp (1000 ms).

### ADJUST THE GREEN COMPONENT FOR A BETTER WHITE!

The fixtures allow also a fine tuning of the green component of a selected CCT.

### NO LIGHTING DESK? NO PROBLEM

The fixtures offer the possibility to control one or more fixtures without using a lighting desk, allowing operator to create one or more static colors and to define the duration and sequence of each one.

The function can be set:

- on a single fixture (**stand alone**) or
- on a group of fixtures; in this second case it is necessary to define the **master** fixture and the **slave** ones.

### ABLE TO CALIBRATE LED COLOURS

When using a group of fixtures it may happen that one or more of them, despite being set with the same DMX values, has different color component to be "corrected" to make the tint uniform to that of the other fixtures.

The fixtures allow to modify the spectrometric curve of the LED source, intervening on the contribution of the single color of the array.

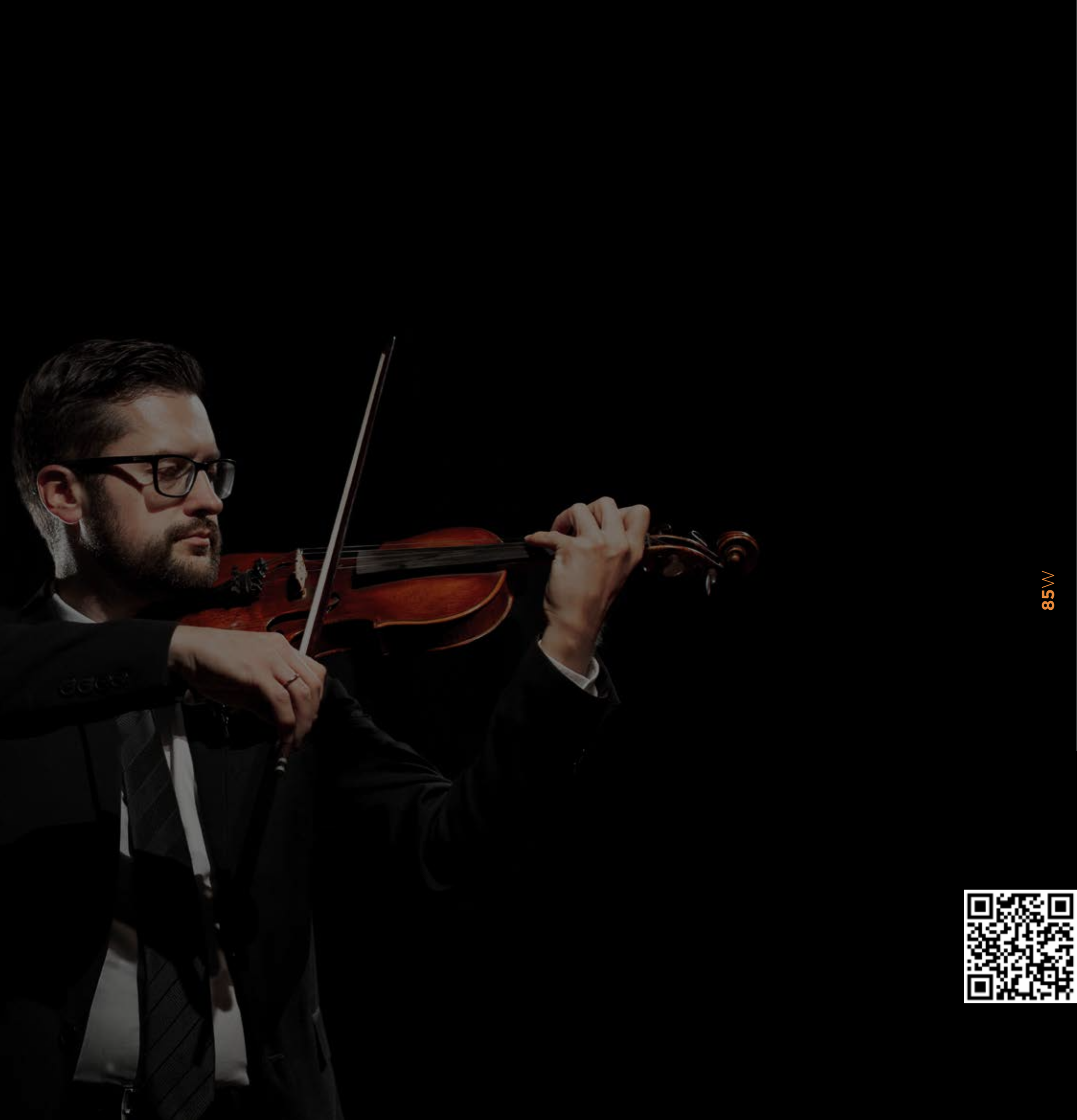
### INCREASE THE LIGHT OUTPUT!

When for a tint or a CCT not all LED channels are at full, the fixture can increase the light output to achieve maximum efficiency of the luminaire.

A microprocessor monitors the working temperature of all the components and updates the source control parameters in real time to avoid any overheating and consequently putting the lifespan on risk.







85W

HALLED Series

## Downlight



Here you can find all the details regarding our fixtures, such as:

- Short form
- Datasheets
- User manual
- Showbook
- GDTF file
- DWG files
- LDT files
- Other tools



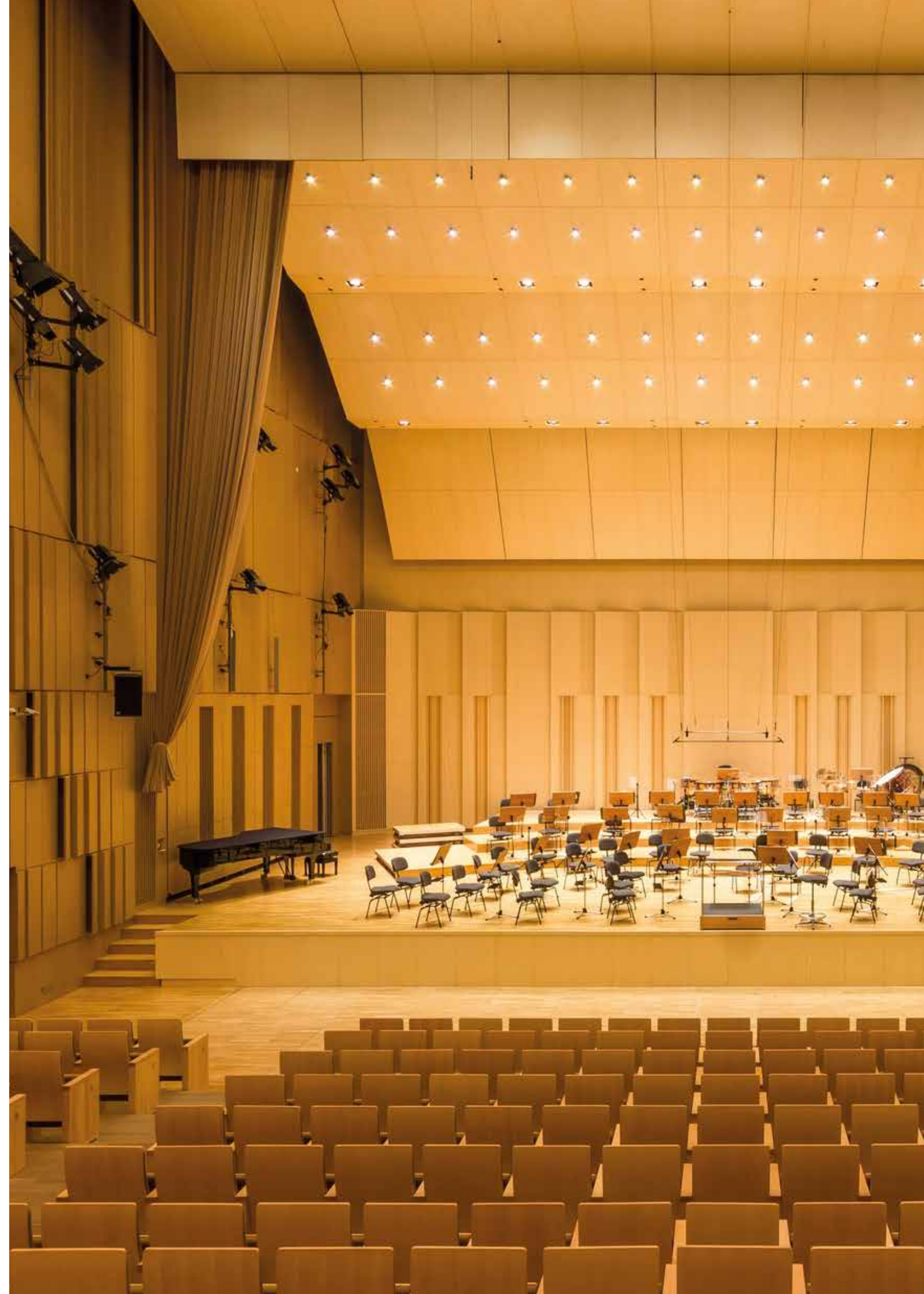
HALLED Series



## Floodlight Downlight

85W

HALLED Series is the ideal solution for installations where silence, energy saving and maintenance cost reduction are key factors.





## Noise & Thermal Management

### NO FAN, NO NOISE

The HALLED Series is based on a highly effective natural thermal management system **without fan** and **without noise**: that means that each Downlight is absolutely silent with no buzzing or detectable RFI.

### NO OVERHEATING

Thanks to its low power bright light in acoustic shells there is no risk to heat up the expensive instruments and scenery with dangerous IR and UV, keeping the musicians and performers comfortable on stage and increasing safety on stage.

### CURRENT MODULATION

It is an operating mode that eliminates flickering issues caused by LED PWM driving, and acoustic disturbances generated by electronic components.

This function is specifically indicated for applications in TV studios or acoustic rooms where maximum silence and absence of flickering are required.

## Applications



ORCHESTRA SHELL



WORKING SPACES



SHOP WINDOWS



MALLS



EXHIBITIONS



THEATRES



ART GALLERIES



TV STUDIOS



CINEMAS



## Customise your HALLED

The HALLED can be customized with desired RAL powder-coat paint, different bezel, clips, yokes and fixing solutions to properly finish shell ceiling appearance from below.





30W

LUT Series | CANOVA Series

## Pinspot



Here you can find all the details regarding our fixtures, such as:

- Short form
- Datasheets
- User manual
- Showbook
- GDTF file
- DWG files
- LDT files
- Other tools





## Pinspot

30W

Light is an important element in the architectural design of space: it sets off details, it warms a room, it defines the edges of darkness, it creates and modifies shade, it shapes a three-dimensional look to surface and it creates emotional situations for those who live in it.

These lighting fixtures, due to their particular technical and design characteristics, are particularly suitable for use in Showrooms, Shops, Shop Windows, Clubs, Museums, Places of worship, Hotels, Fairs, Congresses and also TV Studios.

All our fixtures are designed for accent and elegant lighting, as versatile as a stage luminaire, as refined as a design lamp, they are suitable to highlight artworks or objects but also to illuminate entire spaces in a sophisticated way.



### Pinpoint SUPERLUT

- for halo or led lamp
- 230V stand alone
- dimmable from main

### Pinpoint SUPERLUT

- led integrated
- 230V stand alone
- 230V on track
- dimmable from main

### Pinpoint CANOVA

- led integrated
- 230V stand alone
- 230V on track
- 48V on track
- DMX, DALI, CASAMBI

### Profile CANOVA

- led integrated
- 230V stand alone
- 230V on track
- 48V on track
- DMX, DALI, CASAMBI



## Pinspot, Profile

30W

Compact and elegant lighting fixtures for exceptional performance.

A high light efficiency LED combined with a transparent high efficiency lens allows remarkable performances, especially when compared to other fixtures of the same power and size. It can light objects at great distances with a maximum consumption of only 30W per luminaire.





## Your Notes

Ed. 03/2024

The data and technical details provided may undergo improvements under the company's discretion.



Professional  
lighting fixtures  
made in Italy,  
since 1969.

**Headquarters and Showroom**

Via Sardegna, 3 - 20098, San Giuliano Milanese (MI), IT  
Phone: +39 02.988301

**Registered Office**

Via Martino Anzi, 8 - 22100, Como (CO), IT  
VAT IT03859900130



[sales@spotlight.it](mailto:sales@spotlight.it) | [www.spotlight.it](http://www.spotlight.it)