



RETAIL



Retail Lighting: enhancing the shopping experience.



SPOTLIGHT[™]
professional lighting for the performing arts

Professional lighting since 1969

Since its establishment in 1969, **Spotlight** has been committed to the creation and craftsmanship of professional lighting fixtures, catering to prominent **global destinations and infrastructure projects**. Our focus revolves around providing **lighting solutions** for prestigious venues and cultural spaces, where light plays a crucial role in shaping compelling and emotional environments.

We take great pride in our extensive technological know-how, enabling us to design high-performance lighting fixtures distinguished by their unique and innovative designs. Every product in our range proudly carries the “**Made in Italy**” label, signifying its origin from state-of-the-art laboratories. Within these facilities, a dedicated team of professionals works tirelessly to conceive and improve projectors that, over the years, have become synonymous with **excellence and dependability**.

Moreover, every fixture featured in our catalog is adaptable to meet precise customer specifications, enabling us to actualize distinctive solutions that cater to the exacting needs of even the most discerning lighting designers and complex projects.

| | |
|--|-----------|
| 1. INTRO | 3 |
| Spotlight Retail Showroom - Professional lighting excellence! | |
| 2. LED TECHNOLOGY IN RETAIL SHOWROOMS | 6 |
| 3. BENEFITS OF HIGH QUALITY LIGHTING IN RETAIL SHOWROOMS: | 8 |
| 4. SPOTLIGHT'S SOLUTIONS | 11 |
| HYPERION Series HALLED Series LUT Series CANOVA Series | |
| 5. NOTES | 18 |



Retail Showroom - Professional lighting excellence!

Every lighting design project plays a crucial role in shaping the atmosphere of retail showrooms. With a steadfast dedication spanning 45 years, Spotlight remains committed to passionately illuminating communal spaces, enriching the visual experience in **retail environments**.

Our goal is to provide **optimal visibility**, cultivating an ambiance that enhances the **emotional connection** and overall **experience** for visitors.

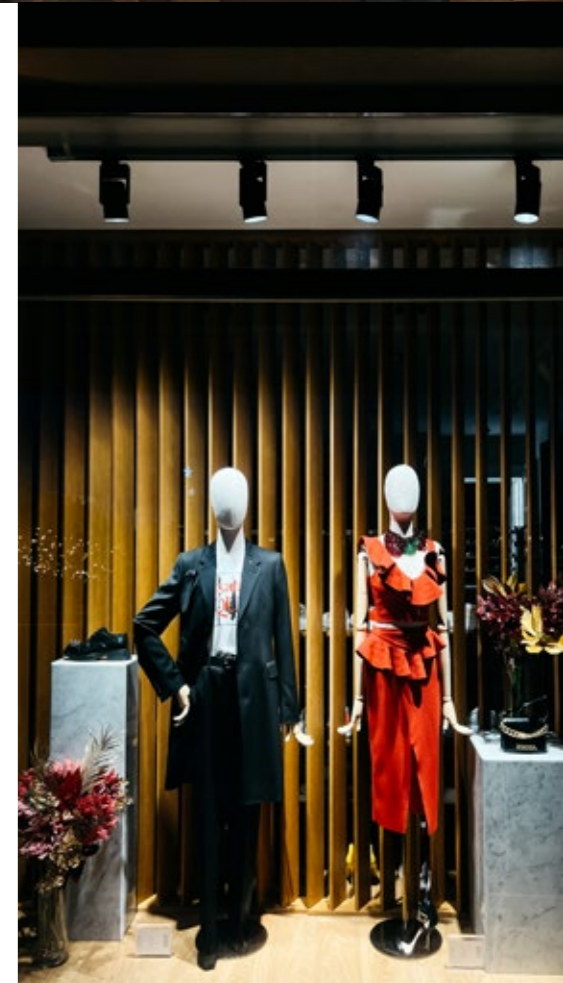


Spotlight meticulously designs and manufactures lighting fixtures that are certified with **ISO 9001**, guaranteeing unparalleled performance in professional lighting.

Our internal team of engineers and lighting designers excels in tailoring lighting products and solutions to meet the **specific needs** of retail showrooms, ensuring the highest level of luminosity.

Our in-house research and development department collaborates with seasoned professionals in specialized audio and video systems, specifically crafted for challenging acoustic environments found in expansive **retail spaces**.

This expertise ensures a seamless **integration of lighting and multimedia elements** to elevate the overall visitor experience in retail showrooms.



LED technology in retail showrooms

LED technology emerges as a transformative force for illuminating retail spaces. Operating within a temperature range of 20°C to 90°C, LEDs underscore the significance of temperature control for **energy efficiency**. Specifically designed for retail showrooms, LED lighting fixtures maintain temperatures **below 25°C**, ensuring optimal efficiency and durability.

Beyond efficiency, LED lighting plays a vital role in creating an **appealing atmosphere** within retail showrooms. Controlled temperatures contribute to a comfortable environment for both customers and products on display.

Another advantage of LED lighting in retail showrooms is its capacity to **diminish the need for additional cooling systems**, promoting **sustainability** and **cost-effectiveness**. The coolness of LEDs also contributes to a comfortable environment for both customers and displayed items.

Apart from temperature considerations, LED lighting excels in enhancing product presentation by **being free from ultraviolet (UV) and infrared (IR) rays**. This attribute makes LED technology ideal for retail showrooms, prioritizing the optimal presentation of products and creating a visually appealing shopping environment.



Benefits of high quality lighting in retail showrooms:

- **Longevity:** LED lights surpass traditional bulbs in lifespan, with an average LED lasting up to 50,000 hours compared to a bulb's 10,000 hours. Typically lasting 6 to 12 years, LED lights' lifespan is approximately 40 times longer than that of traditional incandescent bulbs.
- **Energy efficiency:** Another significant advantage of LED lights is their energy efficiency, measured by the amount of lighting per watt. Unlike earlier measurements based on lumens, LEDs produce more useful lumens with less waste compared to other lighting technologies. Switching to LEDs in a retail store can result in noticeable improvements in energy efficiency, though the overall effectiveness depends on the specific LED lights used.
- **Better for the environment:** The use of LED lights in retail stores aligns with the growing environmental consciousness of consumers. As a result, companies and store owners are seeking energy-efficient options to attract socially conscious customers.



- **No UV or heat emissions:** Unlike incandescent bulbs that generate heat, LED lights emit no heat, directing most of their energy into the visible spectrum of light. This eliminates the issue of handling hot bulbs and contributes to a cooler environment.
- **Low voltage operation:** LED lights require less voltage, enhancing safety in businesses, particularly during flood-prone areas. The lower voltage reduces the risk of fatal shocks, providing added safety during clean-up efforts after floods.
- **Enhanced product visibility:** Good lighting highlights products, making them more visible and attractive to customers.
- **Improved ambiance:** Well-designed lighting contributes to a positive and inviting atmosphere, influencing the overall mood and ambiance of the retail showroom.



SPOTLIGHT'S SOLUTIONS



The **HYPERION Series** elevates the benchmarks of lighting excellence to unparalleled heights, skillfully designed for **optimal performance**.

Merging top-tier quality with **minimal heat emission** and a sleek aesthetic, this series is specifically configured to meet diverse lighting needs, ensuring a remarkable ambiance and heightened customer experience.

MAIN FEATURES

- Diffused light / Accent light / Shaped light
- White light / Colored light
- 100, 200, 300, 700W LED

PLUS

- **silent** - adjustable forced ventilation system
- energy saving
- maintenance cost reduction
- constant color temperatures during dimming
- flicker free for TV and mainstream



HYPERION Series



Catering to the unique needs of **retail showrooms**, the HALLED Series offers a comprehensive array of white light, ranging from the natural brilliance of sunlight to the warm tones reminiscent of tungsten bulbs. Ideal for illuminating retail spaces, this series introduces adaptable **Downlights** meticulously designed to enhance the showroom's atmosphere with high-quality white light. These fixtures are expertly crafted to accommodate various applications, guaranteeing a transformative and visually captivating illumination for retail environments.

The HALLED Series stands out as the preferred choice for installations in retail showrooms where factors such as a **noise-free environment**, **energy efficiency**, and **cost-effective maintenance** hold significant importance. It is particularly well-suited for **retail settings**, ensuring optimal lighting conditions to showcase products and create an inviting shopping experience.



HALLED Series



The **LUT Series** presents an array of refined lighting fixtures seamlessly fusing style with **high-performance functionality**. Showcasing a **high-efficiency LED** and a transparent lens, the LUT Series stands out with outstanding lighting capabilities, surpassing fixtures of comparable power and size. With a power consumption of merely **30W** per luminaire, the LUT Series harmonizes **energy efficiency** with the ability to illuminate objects across substantial distances.



The **Stand Alone** option, accommodating a maximum of **80W** (lamp not included), supports both halo and LED lamp AR-111 for versatile lighting solutions. Operating at **230V**, this variant is easily dimmable from the main control.

For further flexibility, the On Track option in the LUT Series features an integrated 35W LED with various **Pinspot choices (10° / 15° / 26° / 36° / 60°)**. This variant is also **dimmable from the main control** and designed for effortless mounting on a track at **230V**.

Elevate your lighting experience with the stylish and high-performing LUT Series, where form meets function flawlessly.

LUT Series





The **CANOVA Series** is a collection of compact and elegant lighting fixtures meticulously crafted for **exceptional performance**.

Boasting a **high light efficiency LED** combined with a transparent, **high-efficiency lens**, this series outshines other lighting fixtures of comparable power and size. With a modest consumption of **30W**, the CANOVA Series not only excels in energy efficiency but is also adept at illuminating objects across considerable distances.



CANOVA Series



The **Stand Alone option**, with a maximum capacity of **75W**, supports both halo and LED lamp AR-111 for versatile lighting solutions. Additionally, the Stand Alone variant operates at **230V** and is dimmable from the main control. The CANOVA Series also offers an **On Track** option with an integrated LED of 30W, providing flexibility with **Pinpoint choices (10° / 15° / 26° / 36° / 60°)**. **Dimmable from the main control** and designed for easy mounting on a track at **230V**, the CANOVA Series ensures a sophisticated lighting experience tailored to your needs.

Professional
lighting fixtures
made in Italy,
since 1969.



www.spotlight.it | sales@spotlight.it