

| Serie Lucciola | Serie Architectural         | Serie Halled     | Serie Hyperion               |                              |                              |                    |                              |                    | Serie Cyclorama   |
|----------------|-----------------------------|------------------|------------------------------|------------------------------|------------------------------|--------------------|------------------------------|--------------------|-------------------|
| 30W<br>Pinspot | 50W<br>Fresnel, PC, Profile | 85W<br>Downlight | 100W<br>Fresnel, PC, Profile | 200W<br>Fresnel, PC, Profile | 300W<br>Fresnel, PC, Profile | 300W<br>Followspot | 700W<br>Fresnel, PC, Profile | 700W<br>Followspot | 300W<br>Cyclorama |

#### SOURCE

- **200W LED**
- For **LUMINOUS FLUX** and **COLOR RENDERING INDEX (CRI)** refer to the related table

#### HOUSING

- Highly resistant body in **extruded aluminum** and **techno-polymer** body
- **IP 20**
- Finishing: **black (other RAL color on request)**

#### ELECTRICAL

- Power consumption: 200 W
- Power supply: 100-240 V – 50/60 Hz
- PF>0.94/230VAC PF>0.98/115VAC at full load

#### THERMAL MANAGEMENT

- Wide ventilation slots for better LED cooling with 3 selectable FAN MODE
- High efficiency heat pipe cooling system
- Ta max 40°C

#### CONNECTION

- Power connector: chassis PowerCON TRUE1 In/Out
- Additional cable: 2m H05RN-F cable with powerCON TRUE1 female cable connector
- DMX: XLR 5-pole In/Out panel connectors

#### OPTICS

- **150mm high-quality glass lens / AR coating**
- Focus: manual
- Gobo size: B (only for Profile)
- For beam angles refer to the related table

#### OPTIONS

- Pole Operated yokes
  - ARC Motorized yokes
- more info [here](#)

#### COMPLIANCE

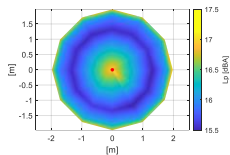
- CE
- EN 60598-1; EN 60598-2-17
- SSL Licensing Program
- Manufactured in Italy with Quality System ISO 9001:2015

#### NOISE LEVEL DATA (silent mode)

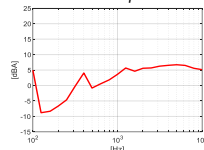
Conditions during measurements:

- Test in hemi-anechoic room
- Temperature: 22°C
- Relative humidity: 79%
- Radius of spherical measuring surface: 2m

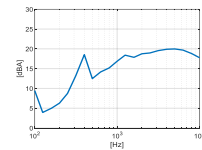
Diagram of Sound Pressure level  $L_p$  [dBA], the red point identifies the direction of maximum noise emission <sup>1</sup>



Sound pressure level spectrum [dBA] measured at maximum noise emission point



Sound power level spectrum  $L_{WA}$  [dBA]



Total sound pressure level  $L_p$  (0.1 – 10 kHz, ref.  $2 \times 10^{-5}$  Pa) at different distances<sup>2</sup>:

| Distance                   | 1 m      | 2 m      | 4 m      | 6 m     |
|----------------------------|----------|----------|----------|---------|
| Sound pressure level $L_p$ | 23.1 dBA | 17.1 dBA | 11.1 dBA | 7.6 dBA |

The total sound power level  $L_{WA}$  is equal to **30.2 dBA** (0.1 – 10 kHz, ref.  $1 \times 10^{-12}$  W).

#### SOFTWARE FUNCTIONS

- **ESD**: 8bit or 16bit
- Up to 6 **DIMMING CURVE Mark-II**
- **LED DELAY**: from 0 to 2000ms
- **AMBER SHIFT**, in combination whit HALO dimming curve and LED delay, in order to emulate the performances of a halogen lamp (only for 6C version)
- PWM LED 500Hz-20KHz
- **± GREEN** in order to guarantee a fine adjustment of green component of CCT (only for 6C version)
- **OUTPUT FREQUENCY** in order to remove flickering
- **LED BOOST** in order to increase +20% the light output of a fixture when for a tint or CCT when not all LED channels are at full
- **FAN MODE**: selectable from fixture (AUTO, STANDARD, SILENT) or remote from DMX
- **LED CALIBRATION** in order to adjust the tints of a group of fixtures when/ff they aren't aligned, despite being set with the same DMX values (only for RGBW, 6C versions)
- **SERVICE CHANNEL** in order to control all the settings that are normally set from the fixture by using a console
- **STAND-ALONE** and **MASTER AND SLAVE** in order to control one or more fixtures without using a console, creating one or multi scenes
- **DISPLAY ROTATION** and **DISPLAY ON/OFF**
- **BOARD TEMPERATURE** and **CHIP TEMPERATURE** in order to monitor how the fixture works **Mark-II**
- **WIRELESS DMX** ready **Mark-II**
- Hour-counter on single LED
- Storage and factory recovery
- Upgradable firmware via DMX/USB tool
- Advanced remote settings (**RDM**) for all parameters via DMX
- **ERROR LIST** in order to display errors that can occur

#### COLOR and CCT PRESETS

RGBW:

- Manual/DMX control:
  - o standard (45) + CCT (2700-8000K) + custom (10)

6C:

- Manual control **Mark-II**
  - o MANUAL PRESET: CCT (9) + LEE FILTERS (66) + custom (10)
  - o MANUAL COLOUR: LEE filters (66) + custom (19)
  - o MANUAL CCT: CCT (36)
- DMX control:
  - o LEE FILTERS channel: standard (241) + custom (14) **Mark-II**
  - o ROSCO FILTERS channel: standard (236) + custom (19) **Mark-II**
  - o CCT channel: TW (2700-6500K) / 6C/8C (1500-20000K) **Mark-II**

#### DIMENSIONS

|         |              |                              |
|---------|--------------|------------------------------|
| FN      | 6.0 / 7,5 kg | 350*300*360 / 390*300*450 mm |
| PC      | 6.0 / 7,5 kg | 350*300*360 / 390*300*450 mm |
| PR (ZS) | 11.5 Kg      | 470*340*760 mm               |
| PR (ZW) | 10.0 Kg      | 470*340*640 mm               |

<sup>1</sup>The positive direction of X axis corresponds to the spotlight central axis and points in the direction of light emission.

<sup>2</sup>Estimated Sound Pressure levels starting from the one measured at the point of maximum noise emissions at 2 m.

| Serie Lucciola | Serie Architectural         | Serie Halled     | Serie Hyperion               |                              |                              |                    |                              |                    | Serie Cyclorama   |
|----------------|-----------------------------|------------------|------------------------------|------------------------------|------------------------------|--------------------|------------------------------|--------------------|-------------------|
| 30W<br>Pinspot | 50W<br>Fresnel, PC, Profile | 85W<br>Downlight | 100W<br>Fresnel, PC, Profile | 200W<br>Fresnel, PC, Profile | 300W<br>Fresnel, PC, Profile | 300W<br>Followspot | 700W<br>Fresnel, PC, Profile | 700W<br>Followspot | 300W<br>Cyclorama |

## DMX PERSONALITIES

|       | White  |        |             |
|-------|--------|--------|-------------|
|       | 1CH    | 2CH    | 3CH         |
|       | 8 BIT  | 8 BIT  | 16 BIT      |
| 1 ch  | DIMMER | DIMMER | DIMMER      |
| 2 ch  |        | STROBO | DIMMER FINE |
| 3 ch  |        |        | STROBO      |
| 4 ch  |        |        |             |
| 5 ch  |        |        |             |
| 6 ch  |        |        |             |
| 7 ch  |        |        |             |
| 8 ch  |        |        |             |
| 9 ch  |        |        |             |
| 10 ch |        |        |             |

|            | Tunable White |              |              |              |              |
|------------|---------------|--------------|--------------|--------------|--------------|
|            | EASY          | SPLIT        | SPLIT        | STUDIO       | THEATRE FULL |
|            | 8 BIT         | 8 BIT        | 16 BIT       | 16 BIT       | 16 BIT       |
| DIMMER     | DIMMER        | DIMMER       | DIMMER       | DIMMER       | DIMMER       |
| CCT LINEAR | WW            | DIMMER FINE  | DIMMER FINE  | DIMMER FINE  | DIMMER FINE  |
|            | CW            | WW           | CCT PRESET   | CCT LINEAR   |              |
|            | STROBO+STORE  | WW FINE      | WW +/-       | DELAY        |              |
|            | SERVICE       | CW           | CW +/-       | FAN          |              |
|            |               | CW FINE      | DELAY        | STROBO+STORE |              |
|            |               | DELAY        | FAN          | SERVICE      |              |
|            |               | FAN          | STROBO+STORE |              |              |
|            |               | STROBO+STORE | SERVICE      |              |              |
|            |               | SERVICE      |              |              |              |

|       | RGBW          |              |              |               |               |
|-------|---------------|--------------|--------------|---------------|---------------|
|       | EASY          | HSI          | CMY          | RGBW          | FULL          |
|       | 8 BIT         | 8 BIT        | 8 BIT        | 8 BIT         | 16 BIT        |
| 1 ch  | DIMMER        | DIMMER       | DIMMER       | DIMMER        | DIMMER        |
| 2 ch  | CCT PRESET    | HUE          | CYAN         | RED           | DIMMER FINE   |
| 3 ch  | COLOUR PRESET | HUE FINE     | MAGENTA      | GREEN         | RED           |
| 4 ch  |               | SATURATION   | YELLOW       | BLUE          | RED FINE      |
| 5 ch  |               | STROBO+STORE | STROBO+STORE | WHITE         | GREEN         |
| 6 ch  |               | SERVICE      | SERVICE      | CCT PRESET    | GREEN FINE    |
| 7 ch  |               |              |              | COLOUR PRESET | BLUE          |
| 8 ch  |               |              |              | STROBO+STORE  | BLUE FINE     |
| 9 ch  |               |              |              | SERVICE       | WHITE         |
| 10 ch |               |              |              |               | WHITE FINE    |
| 11 ch |               |              |              |               | CCT PRESET    |
| 12 ch |               |              |              |               | COLOUR PRESET |
| 13 ch |               |              |              |               | DELAY         |
| 14 ch |               |              |              |               | FAN           |
| 15 ch |               |              |              |               | STROBO+STORE  |
| 16 ch |               |              |              |               | SERVICE       |

|       | 6C            |              |              |             |               |               |
|-------|---------------|--------------|--------------|-------------|---------------|---------------|
|       | EASY          | HSIC         | RGBACL       | RGBACL      | THEATER       | STUDIO        |
|       | 8 BIT         | 8 BIT        | 8 BIT        | 16 BIT      | 16 BIT        | 16 BIT        |
| 1 ch  | DIMMER        | DIMMER       | DIMMER       | DIMMER      | DIMMER        | DIMMER        |
| 2 ch  | ROSCO FILTERS | HUE          | RED          | DIMMER FINE | DIMMER FINE   | DIMMER FINE   |
| 3 ch  | LEE FILTERS   | HUE FINE     | GREEN        | RED         | RED           | RED           |
| 4 ch  | CCT PRESET    | SATURATION   | BLUE         | RED FINE    | RED FINE      | RED FINE      |
| 5 ch  |               | CCT LINEAR   | AMBER        | GREEN       | GREEN         | GREEN         |
| 6 ch  |               | STROBO+STORE | CYAN         | GREEN FINE  | GREEN FINE    | GREEN FINE    |
| 7 ch  |               | SERVICE      | LIME         | BLUE        | BLUE          | BLUE          |
| 8 ch  |               |              | STROBO+STORE | BLUE FINE   | BLUE FINE     | BLUE FINE     |
| 9 ch  |               |              | SERVICE      | AMBER       | AMBER         | AMBER         |
| 10 ch |               |              |              | AMBER FINE  | AMBER FINE    | AMBER FINE    |
| 11 ch |               |              |              | CYAN        | CYAN          | CYAN          |
| 12 ch |               |              |              | CYAN FINE   | CYAN FINE     | CYAN FINE     |
| 13 ch |               |              |              | LIME        | LIME          | LIME          |
| 14 ch |               |              |              | LIME FINE   | LIME FINE     | LIME FINE     |
| 15 ch |               |              |              |             | ROSCO FILTERS | ROSCO FILTERS |
| 16 ch |               |              |              |             | LEE FILTERS   | LEE FILTERS   |
| 17 ch |               |              |              |             | SATURATION    | CCT STEPS     |
| 18 ch |               |              |              |             | CCT LINEAR    | GREEN +/-     |
| 19 ch |               |              |              |             | GREEN +/-     | DELAY         |
| 20 ch |               |              |              |             | DELAY         | FAN           |
| 21 ch |               |              |              |             | FAN           | STROBO+STORE  |
| 22 ch |               |              |              |             | STROBO+STORE  | SERVICE       |
| 23 ch |               |              |              |             | SERVICE       | FREE 1        |
| 24 ch |               |              |              |             | FREE 1        | FREE 2        |
| 25 ch |               |              |              |             | FREE 2        |               |

| Serie Lucciola | Serie Architectural         | Serie Halled     | Serie Hyperion               |                              |                              |                    |                              |                    | Serie Cyclorama   |
|----------------|-----------------------------|------------------|------------------------------|------------------------------|------------------------------|--------------------|------------------------------|--------------------|-------------------|
| 30W<br>Pinspot | 50W<br>Fresnel, PC, Profile | 85W<br>Downlight | 100W<br>Fresnel, PC, Profile | 200W<br>Fresnel, PC, Profile | 300W<br>Fresnel, PC, Profile | 300W<br>Followspot | 700W<br>Fresnel, PC, Profile | 700W<br>Followspot | 300W<br>Cyclorama |

### LIGHT OUTPUT

| Model         | Type | CT          | (measure at) | CRI | TLCI | TM-30 | Lumen (max) | Beam | Lux   | Ø Beam | Lux   | Ø Beam | Lux   | Ø Beam | Lux | Ø Beam | Lux | Ø Beam | Peak CD |
|---------------|------|-------------|--------------|-----|------|-------|-------------|------|-------|--------|-------|--------|-------|--------|-----|--------|-----|--------|---------|
| FN HY LED 200 | WW   | 3000K       | 3000K        | 97  | 97   | 94    | 20.542      | 14°  | 3.975 | 1,0    | 1.767 | 1,5    | 994   | 2,0    | 636 | 2,4    | 442 | 2,9    | 63.600  |
|               |      |             |              |     |      |       |             | 81°  | 388   | 6,8    | 172   | 10,1   | 97    | 13,5   | 62  | 16,9   | 43  | 20,3   | 6.200   |
|               | NW   | 4000K       | 4000K        | 97  | 97   | 94    | 20.797      | 14°  | 4.198 | 1,0    | 1.866 | 1,5    | 1.049 | 2,0    | 672 | 2,4    | 466 | 2,9    | 67.163  |
|               |      |             |              |     |      |       |             | 81°  | 409   | 6,8    | 182   | 10,1   | 102   | 13,5   | 65  | 16,9   | 45  | 20,3   | 6.547   |
|               | CW   | 5600K       | 5600K        | 97  | 97   | 94    | 21.794      | 14°  | 4.897 | 1,0    | 2.177 | 1,5    | 1.224 | 2,0    | 784 | 2,4    | 544 | 2,9    | 78.356  |
|               |      |             |              |     |      |       |             | 81°  | 477   | 6,8    | 212   | 10,1   | 119   | 13,5   | 76  | 16,9   | 53  | 20,3   | 7.639   |
|               | TW   | 2700-6500K  | 4000K        | 95  | 92   | 93    | 11.700      | 13°  | 5.594 | 0,9    | 2.486 | 1,4    | 1.398 | 1,8    | 895 | 2,3    | 622 | 2,7    | 89.500  |
|               |      |             |              |     |      |       |             | 50°  | 1.150 | 3,7    | 511   | 5,6    | 288   | 7,4    | 184 | 9,3    | 128 | 11,1   | 18.400  |
|               | RGBW | 2700-8000K  | Full Ch      | 85  | 90   | 90    | 8.400       | 13°  | 3.775 | 0,9    | 1.678 | 1,4    | 944   | 1,8    | 604 | 2,3    | 419 | 2,7    | 60.400  |
|               |      |             |              |     |      |       |             | 50°  | 850   | 3,7    | 378   | 5,6    | 213   | 7,4    | 136 | 9,3    | 94  | 11,1   | 13.600  |
|               | 6C   | 1500-20000K | Full Ch      | 97  | 92   | 94    | 9.360       | 13°  | 4.475 | 0,9    | 1.989 | 1,4    | 1.119 | 1,8    | 716 | 2,3    | 497 | 2,7    | 71.600  |
|               |      |             |              |     |      |       |             | 50°  | 920   | 3,7    | 409   | 5,6    | 230   | 7,4    | 147 | 9,3    | 102 | 11,1   | 14.720  |
|               |      |             |              |     |      |       |             | 4 m  |       | 6 m    |       | 8 m    |       | 10 m   |     | 12 m   |     |        |         |

| Model         | Type | CT          | (measure at) | CRI | TLCI | TM-30 | Lumen (max) | Beam | Lux   | Ø Beam | Lux   | Ø Beam | Lux | Ø Beam | Lux | Ø Beam | Lux | Ø Beam | Peak CD |
|---------------|------|-------------|--------------|-----|------|-------|-------------|------|-------|--------|-------|--------|-----|--------|-----|--------|-----|--------|---------|
| PC HY LED 200 | WW   | 3000K       | 3000K        | 97  | 97   | 94    | 20.542      | 16°  | 2.170 | 1,1    | 964   | 1,7    | 543 | 2,2    | 347 | 2,8    | 241 | 3,3    | 34.720  |
|               |      |             |              |     |      |       |             | 87°  | 378   | 7,5    | 168   | 11,3   | 94  | 15,0   | 60  | 18,8   | 42  | 22,5   | 6.040   |
|               | NW   | 4000K       | 4000K        | 97  | 97   | 94    | 20.797      | 16°  | 2.292 | 1,1    | 1.018 | 1,7    | 573 | 2,2    | 367 | 2,8    | 255 | 3,3    | 36.665  |
|               |      |             |              |     |      |       |             | 87°  | 399   | 7,5    | 177   | 11,3   | 100 | 15,0   | 64  | 18,8   | 44  | 22,5   | 6.378   |
|               | CW   | 5600K       | 5600K        | 97  | 97   | 94    | 21.794      | 16°  | 2.673 | 1,1    | 1.188 | 1,7    | 668 | 2,2    | 428 | 2,8    | 297 | 3,3    | 42.776  |
|               |      |             |              |     |      |       |             | 87°  | 465   | 7,5    | 207   | 11,3   | 116 | 15,0   | 74  | 18,8   | 52  | 22,5   | 7.441   |
|               | TW   | 2700-6500K  | 4000K        | 95  | 92   | 93    | 11.700      | 15°  | 3.844 | 1,0    | 1.708 | 1,6    | 961 | 2,1    | 615 | 2,6    | 427 | 3,1    | 61.500  |
|               |      |             |              |     |      |       |             | 50°  | 847   | 3,7    | 376   | 5,6    | 212 | 7,4    | 136 | 9,3    | 94  | 11,1   | 13.550  |
|               | RGBW | 2700-8000K  | Full Ch      | 85  | 90   | 90    | 8.400       | 15°  | 2.750 | 1,0    | 1.222 | 1,6    | 688 | 2,1    | 440 | 2,6    | 306 | 3,1    | 44.000  |
|               |      |             |              |     |      |       |             | 50°  | 653   | 3,7    | 290   | 5,6    | 163 | 7,4    | 104 | 9,3    | 73  | 11,1   | 10.440  |
|               | 6C   | 1500-20000K | Full Ch      | 97  | 92   | 94    | 9.360       | 15°  | 3.075 | 1,0    | 1.367 | 1,6    | 769 | 2,1    | 492 | 2,6    | 342 | 3,1    | 49.200  |
|               |      |             |              |     |      |       |             | 50°  | 678   | 3,7    | 301   | 5,6    | 169 | 7,4    | 108 | 9,3    | 75  | 11,1   | 10.840  |
|               |      |             |              |     |      |       |             | 4 m  |       | 6 m    |       | 8 m    |     | 10 m   |     | 12 m   |     |        |         |

| Model            | Type | CT          | (measure at) | CRI | TLCI | TM-30 | Lumen (max) | Beam | Lux   | Ø Beam | Lux   | Ø Beam | Lux   | Ø Beam | Lux   | Ø Beam | Lux | Ø Beam | Peak CD |
|------------------|------|-------------|--------------|-----|------|-------|-------------|------|-------|--------|-------|--------|-------|--------|-------|--------|-----|--------|---------|
| PR HY LED 200 ZS | WW   | 3000K       | 3000K        | 97  | 97   | 94    | 20.542      | 15°  | 6.550 | 1,0    | 2.911 | 1,6    | 1.638 | 2,1    | 1.048 | 2,6    | 728 | 3,1    | 104.800 |
|                  |      |             |              |     |      |       |             | 30°  | 2.295 | 2,1    | 1.020 | 3,2    | 574   | 4,3    | 367   | 5,3    | 255 | 6,4    | 36.720  |
|                  | NW   | 4000K       | 4000K        | 97  | 97   | 94    | 20.797      | 15°  | 6.917 | 1,0    | 3.074 | 1,6    | 1.729 | 2,1    | 1.107 | 2,6    | 769 | 3,1    | 110.672 |
|                  |      |             |              |     |      |       |             | 30°  | 2.424 | 2,1    | 1.077 | 3,2    | 606   | 4,3    | 388   | 5,3    | 269 | 6,4    | 38.777  |
|                  | CW   | 5600K       | 5600K        | 97  | 97   | 94    | 21.794      | 15°  | 8.070 | 1,0    | 3.587 | 1,6    | 2.017 | 2,1    | 1.291 | 2,6    | 897 | 3,1    | 129.115 |
|                  |      |             |              |     |      |       |             | 30°  | 2.827 | 2,1    | 1.257 | 3,2    | 707   | 4,3    | 452   | 5,3    | 314 | 6,4    | 45.240  |
|                  | TW   | 2700-6500K  | 4000K        | 95  | 92   | 93    | 11.700      | 15°  | 6.997 | 1,0    | 3.110 | 1,6    | 1.749 | 2,1    | 1.120 | 2,6    | 777 | 3,1    | 111.950 |
|                  |      |             |              |     |      |       |             | 30°  | 2.072 | 2,1    | 921   | 3,2    | 518   | 4,3    | 332   | 5,3    | 230 | 6,4    | 33.150  |
|                  | RGBW | 2700-8000K  | Full Ch      | 85  | 90   | 90    | 8.400       | 15°  | 5.318 | 1,0    | 2.363 | 1,6    | 1.329 | 2,1    | 851   | 2,6    | 591 | 3,1    | 85.082  |
|                  |      |             |              |     |      |       |             | 30°  | 1.575 | 2,1    | 700   | 3,2    | 394   | 4,3    | 252   | 5,3    | 175 | 6,4    | 25.194  |
|                  | 6C   | 1500-20000K | Full Ch      | 97  | 92   | 94    | 9.360       | 15°  | 5.598 | 1,0    | 2.488 | 1,6    | 1.399 | 2,1    | 896   | 2,6    | 622 | 3,1    | 89.560  |
|                  |      |             |              |     |      |       |             | 30°  | 1.658 | 2,1    | 737   | 3,2    | 414   | 4,3    | 265   | 5,3    | 184 | 6,4    | 26.520  |
| PR HY LED 200 ZW | WW   | 3000K       | 3000K        | 97  | 97   | 94    | 20.542      | 25°  | 3.900 | 1,8    | 1.733 | 2,6    | 975   | 3,5    | 624   | 4,4    | 433 | 5,3    | 62.400  |
|                  |      |             |              |     |      |       |             | 50°  | 1.358 | 3,7    | 603   | 5,6    | 339   | 7,4    | 217   | 9,3    | 151 | 11,1   | 21.720  |
|                  | NW   | 4000K       | 4000K        | 97  | 97   | 94    | 20.797      | 25°  | 4.119 | 1,8    | 1.830 | 2,6    | 1.030 | 3,5    | 659   | 4,4    | 458 | 5,3    | 65.896  |
|                  |      |             |              |     |      |       |             | 50°  | 1.434 | 3,7    | 637   | 5,6    | 358   | 7,4    | 229   | 9,3    | 159 | 11,1   | 22.937  |
|                  | CW   | 5600K       | 5600K        | 97  | 97   | 94    | 21.794      | 25°  | 4.805 | 1,8    | 2.135 | 2,6    | 1.201 | 3,5    | 769   | 4,4    | 534 | 5,3    | 76.878  |
|                  |      |             |              |     |      |       |             | 50°  | 1.672 | 3,7    | 743   | 5,6    | 418   | 7,4    | 268   | 9,3    | 186 | 11,1   | 26.759  |
|                  | TW   | 2700-6500K  | 4000K        | 95  | 92   | 93    | 11.700      | 25°  | 4.176 | 1,8    | 1.856 | 2,6    | 1.044 | 3,5    | 668   | 4,4    | 464 | 5,3    | 66.820  |
|                  |      |             |              |     |      |       |             | 50°  | 1.320 | 3,7    | 586   | 5,6    | 330   | 7,4    | 211   | 9,3    | 147 | 11,1   | 21.112  |
|                  | RGBW | 2700-8000K  | Full Ch      | 85  | 90   | 90    | 8.400       | 25°  | 3.052 | 1,8    | 1.356 | 2,6    | 763   | 3,5    | 488   | 4,4    | 339 | 5,3    | 48.830  |
|                  |      |             |              |     |      |       |             | 50°  | 964   | 3,7    | 429   | 5,6    | 241   | 7,4    | 154   | 9,3    | 107 | 11,1   | 15.428  |
|                  | 6C   | 1500-20000K | Full Ch      | 97  | 92   | 94    | 9.360       | 25°  | 3.213 | 1,8    | 1.428 | 2,6    | 803   | 3,5    | 514   | 4,4    | 357 | 5,3    | 51.400  |
|                  |      |             |              |     |      |       |             | 50°  | 1.015 | 3,7    | 451   | 5,6    | 254   | 7,4    | 162   | 9,3    | 113 | 11,1   | 16.240  |
|                  |      |             |              |     |      |       |             | 4 m  |       | 6 m    |       | 8 m    |       | 10 m   |       | 12 m   |     |        |         |

### How to... (video tutorial)



[...set DMX personality and DMX address](#)

[...emulate a halogen lamp](#)

[...avoid acoustic and visual disturbances](#)

[... set stand alone and master-slave](#)

[...increase light output +20%](#)

[...set the LED calibration](#)

[...set the colour custom presets](#)

[User manual](#)

[Contact Sales Office](#)

| Serie Lucciola | Serie Architectural         | Serie Halled     | Serie Hyperion               |                              |                              |                    |                              |                    | Serie Cyclorama   |
|----------------|-----------------------------|------------------|------------------------------|------------------------------|------------------------------|--------------------|------------------------------|--------------------|-------------------|
| 30W<br>Pinspot | 50W<br>Fresnel, PC, Profile | 85W<br>Downlight | 100W<br>Fresnel, PC, Profile | 200W<br>Fresnel, PC, Profile | 300W<br>Fresnel, PC, Profile | 300W<br>Followspot | 700W<br>Fresnel, PC, Profile | 700W<br>Followspot | 300W<br>Cyclorama |

#### What is in the box

- Fixture
- 2m H05RN-F cable with powerCON TRUE1 female cable connector
- Safety instructions

#### Accessories

##### FIXTURE

- Filter frame **TC HY 200**
- 4D rotatable barndoors **PL 4 HY 200**
- C-hook for 40-50mm, M10 **GAC**
- Half coupler max 075kg, 48-50, M10 **HC/075**
- Safety rope, 80cm with spring-clamp **FUNE**
- Iris diaphragm **DIA HY**
- Rotatable gobo-holder type B **PGB HY**
- Adaptor cone with framing shutters, for market-standard fixed optics **PR HY CONE**

##### MOVEMENT SYSTEM

- Pole Operated, 2-way Pan and Tilt **PO/2 HY200**
- Pole Operated, 3-way Pan, Tilt and Focus **PO/3 HY200**

| Serie Lucciola | Serie Architectural         | Serie Halled     | Serie Hyperion               |                              |                              |                    |                              |                    | Serie Cyclorama   |
|----------------|-----------------------------|------------------|------------------------------|------------------------------|------------------------------|--------------------|------------------------------|--------------------|-------------------|
| 30W<br>Pinspot | 50W<br>Fresnel, PC, Profile | 85W<br>Downlight | 100W<br>Fresnel, PC, Profile | 200W<br>Fresnel, PC, Profile | 300W<br>Fresnel, PC, Profile | 300W<br>Followspot | 700W<br>Fresnel, PC, Profile | 700W<br>Followspot | 300W<br>Cyclorama |

## PHOTOMETRIC DATA

Conditions during measurements:

- LED: WW
- Test in hemi-anechoic room
- Temperature: 16°C
- Relative humidity: 61%
- Distance: 2m

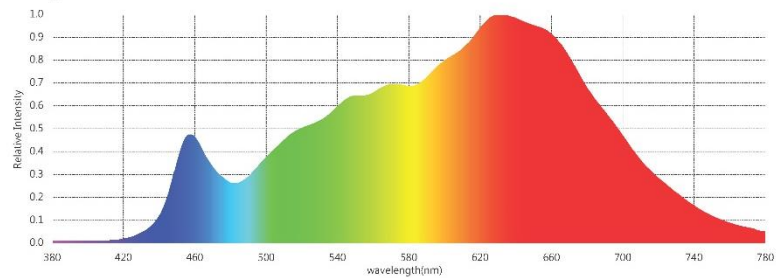
### Parameters

|                    |  |
|--------------------|--|
| CIE_x              | 0.4334                                   |
| CIE_y              | 0.4058                                   |
| CIE_u'             | 0.2475                                   |
| CIE_v'             | 0.5215                                   |
| CCT                | 3075 K                                   |
| Duv                | 0.0012                                   |
| CRI (Ra)(R1~R8)    | 98                                       |
| CRI (Re) (R1-R15)  | 97                                       |
| CQS                | 97                                       |
| TLCI(Qa)           | 99                                       |
| GAI                | 58                                       |
| TM-30-18 Rf        | 94                                       |
| TM-30-18 Rg        | 99                                       |
| Illuminance        | 1,285 lux                                |
| Foot Candle        | 119.4 fc                                 |
| PPFD (400-700nm)   | 22.01 $\mu\text{mol}/\text{m}^2\text{s}$ |
| $\lambda_p$        | 631 nm                                   |
| $\lambda_D$        | 582 nm                                   |
| Purity (Pe)        | 50 %                                     |
| SP Ratio           | 1.5                                      |
| Circadian Stimulus | 0.60                                     |
| Circadian Light    | 1,363                                    |
| Flicker Percentage | 1 %                                      |
| Flicker Index      | 0.00                                     |
| Flicker Frequency  | 136 Hz                                   |

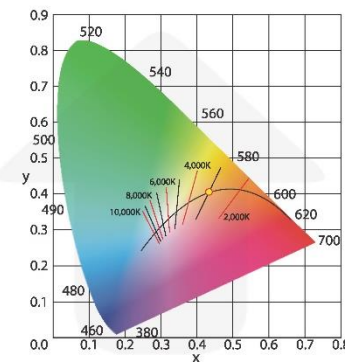
### CRI (Re) (R1-R15)

|    |    |     |    |     |     |
|----|----|-----|----|-----|-----|
| R1 | 99 | R6  | 98 | R11 | 99  |
| R2 | 99 | R7  | 99 | R12 | 81  |
| R3 | 96 | R8  | 98 | R13 | 100 |
| R4 | 99 | R9  | 97 | R14 | 97  |
| R5 | 98 | R10 | 96 | R15 | 98  |

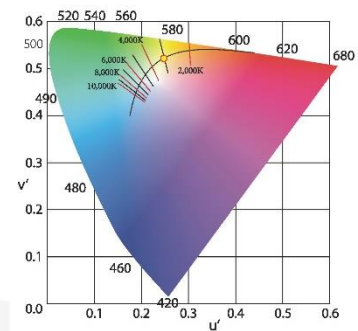
### Spectrum



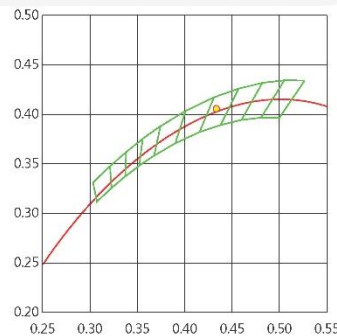
### CIE 1931



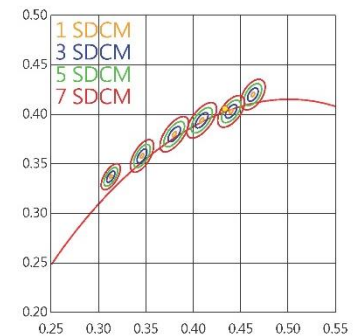
### CIE 1976



### C78.377 - 2017



### IEC-SDCM



### TM-30-18

