

Serie Lucciola	Serie Canova	Serie Halled	Serie Hyperion						Serie Cyclorama
30W Pinspot	30W Pinspot, Profile	85W Downlight	100W Fresnel, PC, Profile	200W Fresnel, PC, Profile	300W Fresnel, PC, Profile	300W Followspot	700W Fresnel, PC, Profile	700W Followspot	600W Cyclorama



HYPERION 700W LED

Fresnel - PC - Profile

Serie Lucciola	Serie Canova	Serie Halled	Serie Hyperion					Serie Cyclorama	
30W Pinspot	30W Pinspot, Profile	85W Downlight	100W Fresnel, PC, Profile	200W Fresnel, PC, Profile	300W Fresnel, PC, Profile	300W Followspot	700W Fresnel, PC, Profile	700W Followspot	600W Cyclorama

SOURCE

- **700W LED ARRAY**
- For **LUMINOUS FLUX** and **COLOR RENDERING INDEX (CRI)** refer to the related table

HOUSING

- Highly resistant body in **extruded aluminum** and **techno-polymer** body
- **IP 20**
- Finishing: **black (other RAL color on request)**

ELECTRICAL

- Power consumption: 700 W
- Power supply: 100-240 V – 50/60 Hz
- PF>0.94/230VAC PF>0.98/115VAC at full load

THERMAL MANAGEMENT

- Wide ventilation slots for better LED cooling with 3 selectable FAN MODE
- High efficiency heat pipe cooling system
- Ta max 40°C

CONNECTION

- Power connector: chassis PowerCON TRUE1 In/Out
- Additional cable: 2m H05RN-F cable with powerCON TRUE1 female cable connector
- DMX: XLR 5-pole In/Out panel connectors

OPTICS

- **250mm high-quality glass lens**
- Focus: manual and motorized (on request)
- Gobo size: B (only for Profile)
- For beam angles refer to the related table

OPTIONS

- Pole Operated yokes
 - ARC Motorized yokes
- more info [here](#)

COMPLIANCE

- CE
- EN 60598-1; EN 60598-2-17
- SSL Licensing Program
- Manufactured in Italy with Quality System ISO 9001:2015

SOFTWARE FUNCTIONS

- **ESD**: 8bit or 16bit
- Up to 6 **DIMMING CURVE Mark-II**
- **LED DELAY**: from 0 to 2000ms
- **AMBER SHIFT**, in combination whit HALO dimming curve and LED delay, in order to emulate the performances of a halogen lamp (only for 8C version)
- PWM LED 500Hz-20KHz
- **± GREEN** in order to guarantee a fine adjustment of green component of CCT (only for 8C version)
- **OUTPUT FREQUENCY** in order to remove flickering
- **LED BOOST** in order to increase +20% the light output of a fixture when for a tint or CCT when not all LED channels are at full (only for Tunable White and 8C versions)
- **FAN MODE**: selectable from fixture (AUTO, STANDARD, SILENT) or remote from DMX
- **LED CALIBRATION** in order to adjust the tints of a group of fixtures when/if they aren't aligned, despite being set with the same DMX values (only for 8C version)
- **SERVICE CHANNEL** in order to control all the settings that are normally set from the fixture by using a console
- **STAND-ALONE** and **MASTER AND SLAVE** in order to control one or more fixtures without using a console, creating one or multi scenes
- **DISPLAY ROTATION** and **DISPLAY ON/OFF**
- **BOARD TEMPERATURE** and **CHIP TEMPERATURE** in order to monitor how the fixture works **Mark-II**
- **WIRELESS DMX** ready **Mark-II**
- Hour-counter on single LED
- Storage and factory recovery
- Upgradable firmware via DMX/USB tool
- Advanced remote settings (**RDM**) for all parameters via DMX
- **ERROR LIST** in order to display errors that can occur

COLOR and CCT PRESETS

- Manual control **Mark-II**
 - o MANUAL PRESET: CCT (9) + LEE FILTERS (66) + custom (10)
 - o MANUAL COLOUR: LEE filters (66) + custom (19)
 - o MANUAL CCT: CCT (36)
- DMX control:
 - o LEE FILTERS channel: standard (241) + custom (14) **Mark-II**
 - o ROSCO FILTERS channel: standard (236) + custom (19) **Mark-II**
 - o CCT channel: TW (2700-6500K) / 6C/8C (1500-20000K) **Mark-II**

DIMENSIONS

FN	18 Kg	600*500*400 mm
PC	20 Kg	690*500*400 mm
PR (ZS)	27 Kg	890*470*400 mm
PR (ZW)	25 Kg	800*470*400 mm

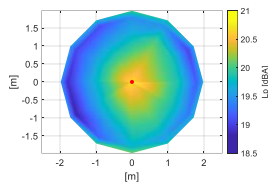
Serie Lucciola	Serie Canova	Serie Halled	Serie Hyperion					Serie Cyclorama	
30W Pinspot	30W Pinspot, Profile	85W Downlight	100W Fresnel, PC, Profile	200W Fresnel, PC, Profile	300W Fresnel, PC, Profile	300W Followspot	700W Fresnel, PC, Profile	700W Followspot	600W Cyclorama

NOISE LEVEL DATA (silent mode)

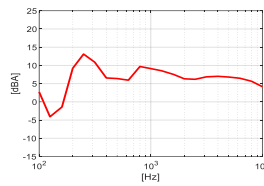
Conditions during measurements:

- Test in hemi-anechoic room
- Temperature: 22°C
- Relative humidity: 79%
- Radius of spherical measuring surface: 2m

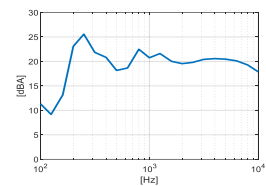
Diagram of Sound Pressure level L_p [dBA], the red point identifies the direction of maximum noise emission ¹



Sound pressure level spectrum [dBA] measured at maximum noise emission point



Sound power level spectrum L_{WA} [dBA]



Total sound pressure level L_p (0.1 – 10 kHz, ref. 2×10^{-5} Pa) at different distances²:

Distance	1 m	2 m	4 m	6 m
Sound pressure level LP	26.8 dBA	20.8 dBA	14.8 dBA	11.3 dBA

The total sound power level L_{WA} is equal to 33.7 dBA (0.1 – 10 kHz, ref. 1×10^{-12} W).

¹The positive direction of X axis corresponds to the spotlight central axis and points in the direction of light emission.

²Estimated Sound Pressure levels starting from the one measured at the point of maximum noise emissions at 2 m.

How to... (video tutorial)

Serie Lucciola	Serie Canova	Serie Halled	Serie Hyperion					Serie Cyclorama	
30W Pinspot	30W Pinspot, Profile	85W Downlight	100W Fresnel, PC, Profile	200W Fresnel, PC, Profile	300W Fresnel, PC, Profile	300W Followspot	700W Fresnel, PC, Profile	700W Followspot	600W Cyclorama

DMX PERSONALITIES

White			
	1CH	3CH	6CH
	8 BIT	8 BIT	16 BIT
1 ch	DIMMER	DIMMER	DIMMER
2 ch		STROBO+STORE	DIMMER FINE
3 ch		SERVICE	DELAY
4 ch			FAN
5 ch			STROBO+STORE
6 ch			SERVICE
7 ch			
8 ch			
9 ch			
10 ch			

Tunable White				
EASY	SPLIT	SPLIT	STUDIO	THEATRE FULL
8 BIT	8 BIT	16 BIT	16 BIT	16 BIT
DIMMER	DIMMER	DIMMER	DIMMER	DIMMER
CCT LINEAR	WW	DIMMER FINE	DIMMER FINE	DIMMER FINE
	CW	WW	CCT PRESET	CCT LINEAR
	STROBO+STORE	WW FINE	WW +/-	DELAY
	SERVICE	CW	CW +/-	FAN
		CW FINE	DELAY	STROBO+STORE
		DELAY	FAN	SERVICE
		FAN	STROBO+STORE	
		STROBO+STORE	SERVICE	
		SERVICE		

8C						
	EASY	HSIC	RGBACL+WW+CW	RGBACL+WW+CW	THEATER	STUDIO
	8 BIT	8 BIT	8 BIT	16 BIT	16 BIT	16 BIT
1 ch	DIMMER	DIMMER	DIMMER	DIMMER	DIMMER	DIMMER
2 ch	ROSCO FILTERS	HUE	RED	DIMMER FINE	DIMMER FINE	DIMMER FINE
3 ch	LEE FILTERS	HUE FINE	GREEN	RED	RED	RED
4 ch	CCT PRESET	SATURATION	BLUE	RED FINE	RED FINE	RED FINE
5 ch		CCT LINEAR	AMBER	GREEN	GREEN	GREEN
6 ch		STROBO+STORE	CYAN	GREEN FINE	GREEN FINE	GREEN FINE
7 ch		SERVICE	LIME	BLUE	BLUE	BLUE
8 ch			WW	BLUE FINE	BLUE FINE	BLUE FINE
9 ch			CW	AMBER	AMBER	AMBER
10 ch			STROBO+STORE	AMBER FINE	AMBER FINE	AMBER FINE
11 ch			SERVICE	CYAN	CYAN	CYAN
12 ch				CYAN FINE	CYAN FINE	CYAN FINE
13 ch				LIME	LIME	LIME
14 ch				LIME FINE	LIME FINE	LIME FINE
15 ch				WW	WW	WW
16 ch				WW FINE	WW FINE	WW FINE
17 ch				CW	CW	CW
18 ch				CW FINE	CW FINE	CW FINE
19 ch				ROSCO FILTERS	ROSCO FILTERS	ROSCO FILTERS
20 ch				LEE FILTERS	LEE FILTERS	LEE FILTERS
21 ch				SATURATION	CCT STEPS	CCT STEPS
22 ch				CCT LINEAR	GREEN +/-	GREEN +/-
23 ch				GREEN +/-	DELAY	DELAY
24 ch				DELAY	FAN	FAN
25 ch				FAN	STROBE+STORE	STROBE+STORE
26 ch				STROBO+STORE	SERVICE	SERVICE
27 ch				SERVICE	FREE 1	FREE 1
28 ch				FREE 1	FREE 2	FREE 2
29 ch				FREE 2		

What is in the box

- Fixture
- 2m H05RN-F cable with powerCON TRUE1 female cable connector
- Safety instructions

Accessories

FIXTURE

- Filter frame **TC HY 700**
- 4D rotatable barndoors **PL 4 HY 700**
- C-hook for 40-50mm, M10 **GAC**
- Half coupler max 075kg, 48-50, M10 **HC/075**
- Safety rope, 80cm with spring-clamp **FUNE**
- Iris diaphragm **DIA HY 700**
- Rotatable gobo-holder type B **PGB HY 700**

MOVEMENT SYSTEM

- Pole Operated, 2-way Pan and Tilt **PO/2 HY700**
- Pole Operated, 3-way Pan, Tilt and Focus **PO/3 HY700**

How to... (video tutorial)

[...set DMX personality and DMX address](#)
[...emulate a halogen lamp](#)
[...avoid acoustic and visual disturbances](#)
[...set stand alone and master-slave](#)
[...increase light output +20%](#)
[...set the LED calibration](#)
[...set the colour custom presets](#)

Serie Lucciola	Serie Canova	Serie Halled	Serie Hyperion						Serie Cyclorama
30W Pinspot	30W Pinspot, Profile	85W Downlight	100W Fresnel, PC, Profile	200W Fresnel, PC, Profile	300W Fresnel, PC, Profile	300W Followspot	700W Fresnel, PC, Profile	700W Followspot	600W Cyclorama

LIGHT OUTPUT

Model	Type	CT	(measure at)	CRI	TLCI	TM-30	Lumen (max)	Beam	Lux	Ø Beam	Lux	Ø Beam	Lux	Ø Beam	Lux	Ø Beam	Lux	Ø Beam
FN HY LED 700	WW	3200K	3200K	97	97	94	47.250	11°	22.860	0,8	10.160	1,1	5.715	1,5	3.658	1,9	2.540	2,3
								53°	3.781	4,0	1.681	5,9	945	7,9	605	9,9	420	11,9
	CW	5600K	5600K	97	97	94	48.600	11°	25.584	0,8	11.371	1,1	6.396	1,5	4.093	1,9	2.843	2,3
								53°	4.232	4,0	1.881	5,9	1.058	7,9	677	9,9	470	11,9
	TW	2700-6500K	5600K	95	92	93	40.950	11°	23.097	0,8	10.265	1,1	5.774	1,5	3.695	1,9	2.566	2,3
								53°	3.821	4,0	1.698	5,9	955	7,9	611	9,9	425	11,9
	8C	1500-20000K	Full	97	92	94	38.830	11°	14.963	0,8	6.650	1,1	3.741	1,5	2.394	1,9	1.663	2,3
								53°	2.475	4,0	1.100	5,9	619	7,9	396	9,9	275	11,9
								4 m		6 m		8 m		10 m		12 m		

Model	Type	CT	(measure at)	CRI	TLCI	TM-30	Lumen (max)	Beam	Lux	Ø Beam	Lux	Ø Beam	Lux	Ø Beam	Lux	Ø Beam	Lux	Ø Beam
PC HY LED 700	WW	3200K	3200K	97	97	94	47.250	13°	23.547	0,9	10.465	1,4	5.887	1,8	3.768	2,3	2.616	2,7
								54°	4.297	4,0	1.910	6,1	1.074	8,1	688	10,1	477	12,1
	CW	5600K	5600K	97	97	94	48.600	13°	26.353	0,9	11.713	1,4	6.588	1,8	4.217	2,3	2.928	2,7
								54°	4.809	4,0	2.137	6,1	1.202	8,1	769	10,1	534	12,1
	TW	2700-6500K	5600K	95	92	93	40.950	13°	23.791	0,9	10.574	1,4	5.948	1,8	3.807	2,3	2.643	2,7
								54°	4.341	4,0	1.930	6,1	1.085	8,1	695	10,1	482	12,1
	8C	1500-20000K	Full	97	92	94	38.830	13°	15.413	0,9	6.850	1,4	3.853	1,8	2.466	2,3	1.713	2,7
								54°	2.813	4,0	1.250	6,1	703	8,1	450	10,1	313	12,1
								4 m		6 m		8 m		10 m		12 m		

Model	Type	CT	(measure at)	CRI	TLCI	TM-30	Lumen (max)	Beam	Lux	Ø Beam	Lux	Ø Beam	Lux	Ø Beam	Lux	Ø Beam	Lux	Ø Beam
PR HY LED 700 ZS	WW	3200K	3200K	95	92	94	47.250	12°	24.725	0,8	10.989	1,3	6.181	1,7	3.956	2,1	2.747	2,5
								28°	7.389	2,0	3.284	3,0	1.847	4,0	1.182	5,0	821	5,9
	CW	5600K	5600K	95	92	94	48.600	12°	25.800	0,8	11.467	1,3	6.450	1,7	4.128	2,1	2.867	2,5
								28°	7.710	2,0	3.427	3,0	1.928	4,0	1.234	5,0	857	5,9
	TW	2700-6500K	5600K	95	92	93	40.950	12°	21.500	0,8	9.556	1,3	5.375	1,7	3.440	2,1	2.389	2,5
								28°	6.425	2,0	2.856	3,0	1.606	4,0	1.028	5,0	714	5,9
	8C	1500-20000K	Full	97	92	94	38.830	12°	20.425	0,8	9.078	1,3	5.106	1,7	3.268	2,1	2.269	2,5
								28°	6.104	2,0	2.713	3,0	1.526	4,0	977	5,0	678	5,9
PR HY LED 700 ZW	WW	3200K	3200K	95	92	94	47.250	20°	16.124	1,4	7.166	2,1	4.031	2,8	2.580	3,5	1.792	4,2
								40°	4.322	2,9	1.921	4,3	1.081	5,8	692	7,2	480	8,7
	CW	5600K	5600K	95	92	94	48.600	20°	18.045	1,4	8.020	2,1	4.511	2,8	2.887	3,5	2.005	4,2
								40°	4.838	2,9	2.150	4,3	1.209	5,8	774	7,2	538	8,7
	TW	2700-6500K	5600K	95	92	93	40.950	20°	16.291	1,4	7.240	2,1	4.073	2,8	2.607	3,5	1.810	4,2
								40°	5.358	2,9	2.382	4,3	1.340	5,8	857	7,2	595	8,7
	8C	1500-20000K	Full	97	92	94	38.830	20°	15.079	1,4	6.702	2,1	3.770	2,8	2.413	3,5	1.675	4,2
								40°	4.042	2,9	1.797	4,3	1.011	5,8	647	7,2	449	8,7
								4 m		6 m		8 m		10 m		12 m		

How to... (video tutorial)

Serie Lucciola	Serie Canova	Serie Halled	Serie Hyperion					Serie Cyclorama	
30W Pinspot	30W Pinspot, Profile	85W Downlight	100W Fresnel, PC, Profile	200W Fresnel, PC, Profile	300W Fresnel, PC, Profile	300W Followspot	700W Fresnel, PC, Profile	700W Followspot	600W Cyclorama

PHOTOMETRIC DATA

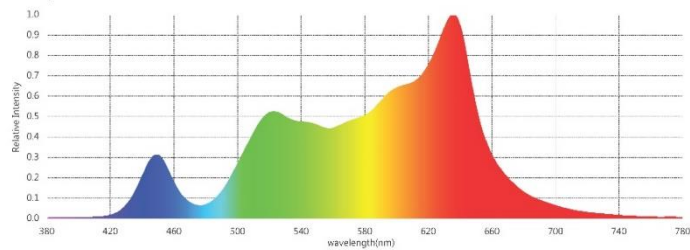
Conditions during measurements:

- LED: WW
- Test in hemi-anechoic room
- Temperature: 16°C
- Relative humidity: 61%
- Distance: 2m

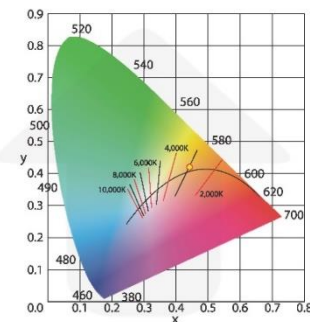
Parameters

CIE_x	0.4421
CIE_y	0.4203
CIE_u'	0.2470
CIE_v'	0.5284
CCT	3043 K
Duv	0.0056
CRI (Ra)(R1~R8)	95
CRI (Re) (R1-R15)	93
CQS	92
TLCI(Qa)	82
GAI	52
TM-30-18 Rf	93
TM-30-18 Rg	103
Illuminance	2,875 lux
Foot Candle	267.1 fc
PPFD (400-700nm)	41.54 $\mu\text{mol}/\text{m}^2\text{s}$
λ_p	636 nm
λ_D	581 nm
Purity (Pe)	60 %
SP Ratio	1.4
Circadian Stimulus	0.60
Circadian Light	2,691
Flicker Percentage	41 %
Flicker Index	0.11
Flicker Frequency	135 Hz

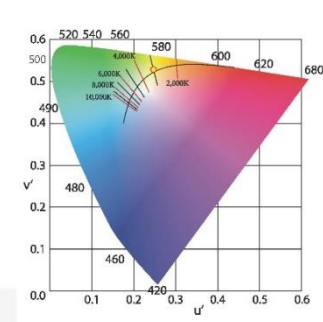
Spectrum



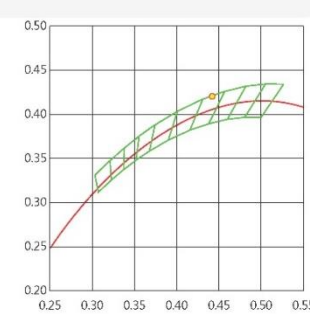
CIE 1931



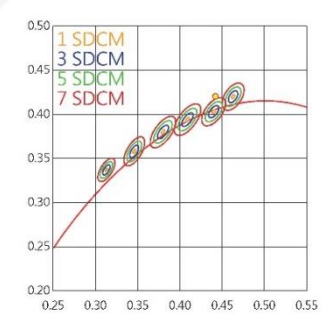
CIE 1976



C78.377 - 2017



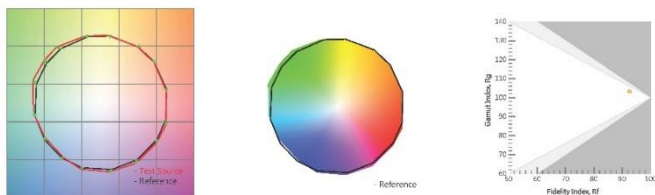
IEC-SDCM



CRI (Re) (R1-R15)

R1	98	R6	98	R11	82
R2	96	R7	96	R12	85
R3	90	R8	97	R13	99
R4	89	R9	87	R14	93
R5	97	R10	90	R15	96

TM-30-18



Serie Lucciola	Serie Canova	Serie Halled	Serie Hyperion						Serie Cyclorama
30W Pinspot	30W Pinspot, Profile	85W Downlight	100W Fresnel, PC, Profile	200W Fresnel, PC, Profile	300W Fresnel, PC, Profile	300W Followspot	700W Fresnel, PC, Profile	700W Followspot	600W Cyclorama



How to... (video tutorial)